

## Product datasheet for **TA351319S**

### KCNMB1 Rabbit Polyclonal Antibody

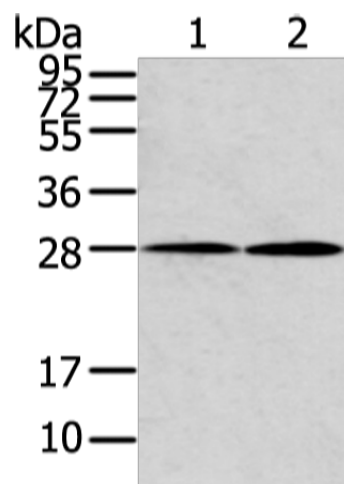
#### Product data:

Product Type:	Primary Antibodies
Applications:	WB
Recommended Dilution:	WB: 200-1000 WB positive control: Mouse heart and lung tissue
Reactivity:	Human, Mouse
Host:	Rabbit
Isotype:	IgG
Clonality:	Polyclonal
Immunogen:	Synthetic peptide of human KCNMB1
Formulation:	pH7.4 PBS, 0.05% NaN <sub>3</sub> , 40% Glycerol
Purification:	Antigen affinity purification
Conjugation:	Unconjugated
Storage:	Store at -20°C as received.
Stability:	Stable for 12 months from date of receipt.
Predicted Protein Size:	22 kDa
Gene Name:	potassium calcium-activated channel subfamily M regulatory beta subunit 1
Database Link:	<a href="#">NP_004128</a> <a href="#">Entrez Gene 16533 Mouse</a> <a href="#">Entrez Gene 3779 Human</a> <a href="#">Q16558</a>
Background:	MaxiK channels are large conductance, voltage and calcium-sensitive potassium channels which are fundamental to the control of smooth muscle tone and neuronal excitability. MaxiK channels can be formed by 2 subunits: the pore-forming alpha subunit and the product of this gene, the modulatory beta subunit. Intracellular calcium regulates the physical association between the alpha and beta subunits.
Synonyms:	BKbeta1; hbeta1; hsl0-beta; K(VCA)beta; k(VCA)beta-1; SLO-BETA; slo-beta-1
Protein Families:	Druggable Genome, Ion Channels: Other, Transmembrane
Protein Pathways:	Vascular smooth muscle contraction



[View online »](#)

## Product images:



Gel: 12%SDS-PAGE

Lysate: 40  $\mu$ g

Lane 1-2: Mouse heart and lung tissue

Primary antibody: [TA351319] (KCNMB1 Antibody) at dilution 1/500

Secondary antibody: Goat anti rabbit IgG at 1/8000 dilution

Exposure time: 15 seconds