

## Product datasheet for **TA351318S**

### KCNK9 Rabbit Polyclonal Antibody

#### Product data:

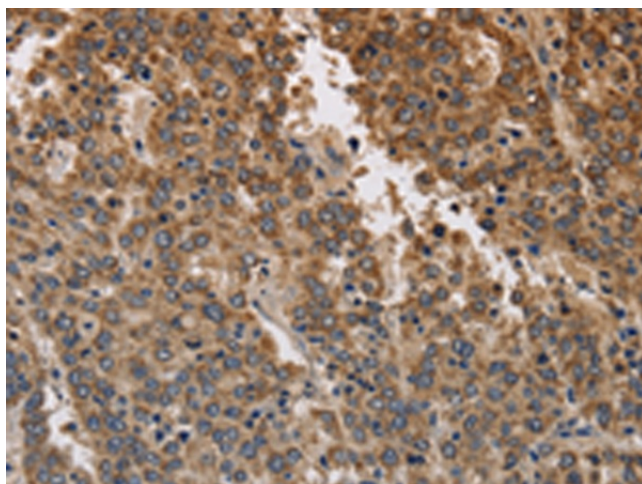
Product Type:	Primary Antibodies
Applications:	IHC, WB
Recommended Dilution:	WB: 500-2000 WB positive control: Human paraneoplastic and normal kidney tissue IHC: 100-300 Positive control: Human liver cancer Predicted cell location: Cytoplasm
Reactivity:	Human
Host:	Rabbit
Isotype:	IgG
Clonality:	Polyclonal
Immunogen:	Synthetic peptide of human KCNK9
Formulation:	pH7.4 PBS, 0.05% NaN <sub>3</sub> , 40% Glycerol
Purification:	Antigen affinity purification
Conjugation:	Unconjugated
Storage:	Store at -20°C as received.
Stability:	Stable for 12 months from date of receipt.
Predicted Protein Size:	42 kDa
Database Link:	<a href="#">NP_057685</a> <a href="#">Entrez Gene 51305 Human</a>
Background:	This gene encodes a protein that contains multiple transmembrane regions and two pore-forming P domains and functions as a pH-dependent potassium channel. Amplification and overexpression of this gene have been observed in several types of human carcinomas. This gene is imprinted in the brain, with preferential expression from the maternal allele. A mutation in this gene was associated with Birk-Barel mental retardation dysmorphism syndrome. Alternative splicing results in multiple transcript variants.
Synonyms:	K2p9.1; KT3.2; TASK-3; TASK3
Protein Families:	Druggable Genome, Ion Channels: Potassium, Transmembrane



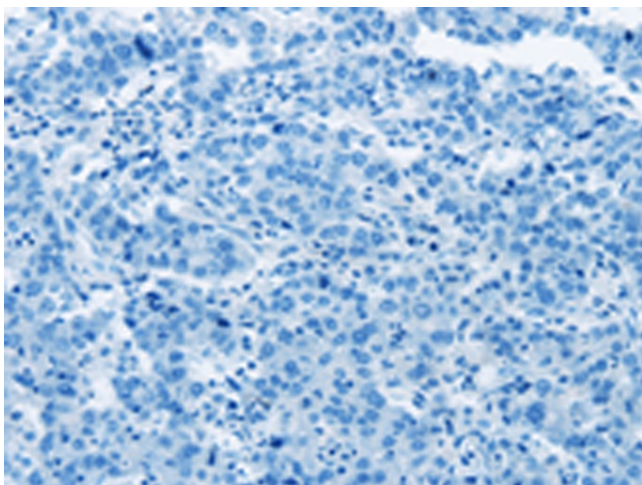
[View online »](#)

**Product images:**

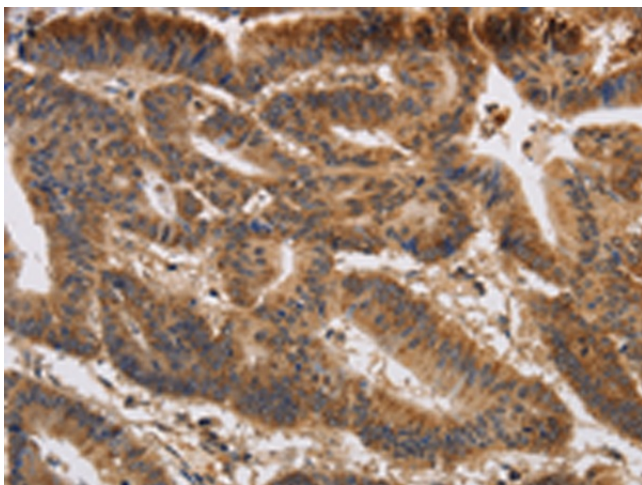
Gel: 8%SDS-PAGE  
Lysate: 40  $\mu$ g  
Lane 1-2: Human paraneoplastic tissue  
Human normal kidney tissue  
Primary antibody: [TA351318] (KCNK9 Antibody)  
at dilution 1/650  
Secondary antibody: Goat anti rabbit IgG at  
1/8000 dilution  
Exposure time: 40 seconds



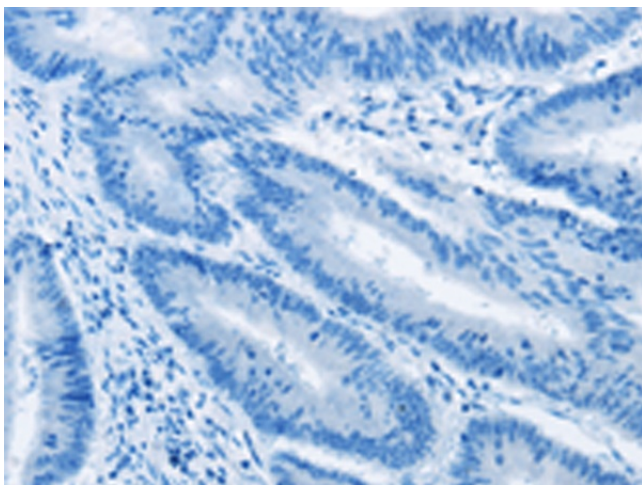
Immunohistochemistry of paraffin-embedded  
Human liver cancer tissue using [TA351318]  
(KCNK9 Antibody) at dilution 1/40 (Original  
magnification:  $\times$ 200)



Immunohistochemistry of paraffin-embedded Human liver cancer tissue using [TA351318] (KCNK9 Antibody) at dilution 1/40, treated with synthetic peptide. (Original magnification: x200)



Immunohistochemistry of paraffin-embedded Human colon cancer tissue using [TA351318] (KCNK9 Antibody) at dilution 1/40 (Original magnification: x200)



Immunohistochemistry of paraffin-embedded Human colon cancer tissue using [TA351318] (KCNK9 Antibody) at dilution 1/40, treated with synthetic peptide. (Original magnification: x200)