

## Product datasheet for **TA351314S**

### KCNG1 Rabbit Polyclonal Antibody

#### Product data:

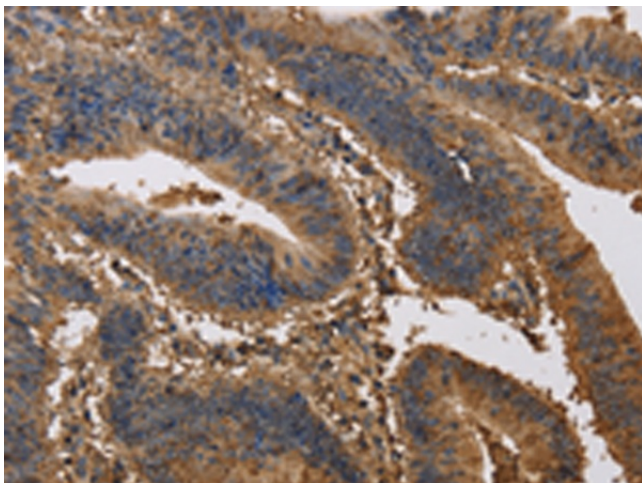
Product Type:	Primary Antibodies
Applications:	IHC
Recommended Dilution:	IHC: 100-300 Positive control: Human colon cancer Predicted cell location: Cytoplasm
Reactivity:	Human, Mouse, Rat
Host:	Rabbit
Isotype:	IgG
Clonality:	Polyclonal
Immunogen:	Synthetic peptide of human KCNG1
Formulation:	pH7.4 PBS, 0.05% NaN <sub>3</sub> , 40% Glycerol
Purification:	Antigen affinity purification
Conjugation:	Unconjugated
Storage:	Store at -20°C as received.
Stability:	Stable for 12 months from date of receipt.
Gene Name:	potassium voltage-gated channel modifier subfamily G member 1
Database Link:	<a href="#">NP_758529</a> <a href="#">Entrez Gene 241794 Mouse</a> <a href="#">Entrez Gene 296395 Rat</a> <a href="#">Entrez Gene 3755 Human</a> <a href="#">Q9UIX4</a>
Background:	Voltage-gated potassium (Kv) channels represent the most complex class of voltage-gated ion channels from both functional and structural standpoints. Their diverse functions include regulating neurotransmitter release, heart rate, insulin secretion, neuronal excitability, epithelial electrolyte transport, smooth muscle contraction, and cell volume. This gene encodes a member of the potassium channel, voltage-gated, subfamily G. This gene is abundantly expressed in skeletal muscle. Multiple alternatively spliced transcript variants have been found in normal and cancerous tissues.
Synonyms:	K13; KCNG; kH2; KV6.1; member 1; MGC12878; OTTHUMP00000043416; potassium channel KH2; potassium channel Kv6.1; potassium voltage-gated channel; subfamily G



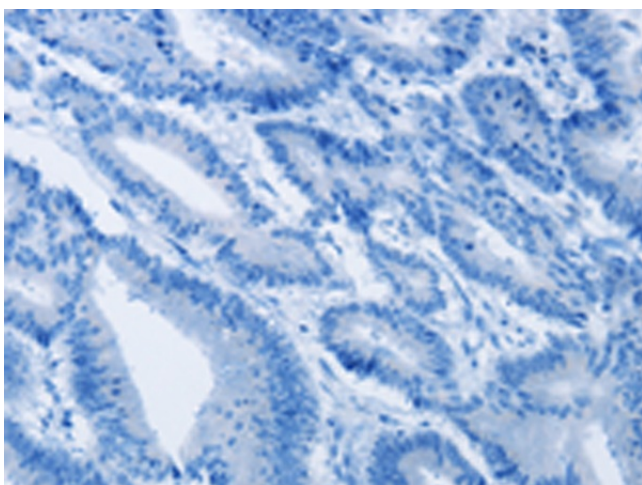
[View online »](#)

Protein Families: Druggable Genome, Ion Channels: Potassium, Transmembrane

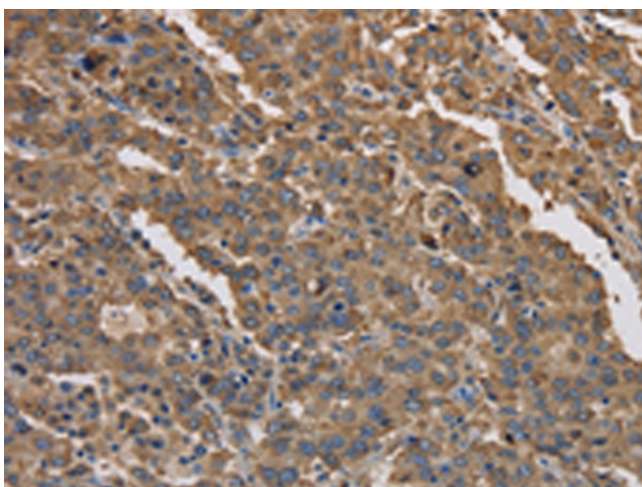
### Product images:



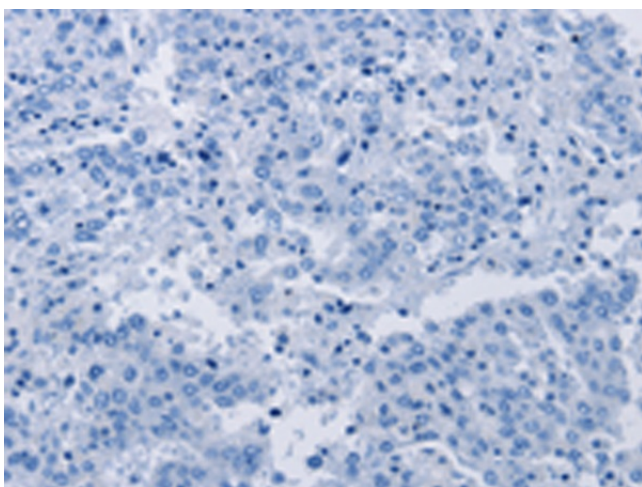
Immunohistochemistry of paraffin-embedded Human colon cancer tissue using [TA351314] (KCNG1 Antibody) at dilution 1/40 (Original magnification:  $\times 200$ )



Immunohistochemistry of paraffin-embedded Human colon cancer tissue using [TA351314] (KCNG1 Antibody) at dilution 1/40, treated with synthetic peptide. (Original magnification:  $\times 200$ )



Immunohistochemistry of paraffin-embedded Human liver cancer tissue using [TA351314] (KCNG1 Antibody) at dilution 1/40 (Original magnification:  $\times 200$ )



Immunohistochemistry of paraffin-embedded Human liver cancer tissue using [TA351314] (KCNG1 Antibody) at dilution 1/40, treated with synthetic peptide. (Original magnification:  $\times 200$ )