

Product datasheet for **TA351313S**

KCND1 Rabbit Polyclonal Antibody

Product data:

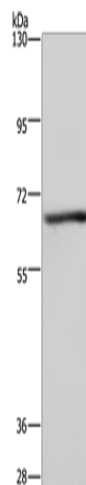
Product Type:	Primary Antibodies
Applications:	IHC, WB
Recommended Dilution:	WB: 200-1000 WB positive control: Human fetal liver tissue IHC: 25-100 Positive control: Human colon cancer Predicted cell location: Cytoplasm
Reactivity:	Human
Host:	Rabbit
Isotype:	IgG
Clonality:	Polyclonal
Immunogen:	Synthetic peptide of human KCND1
Formulation:	pH7.4 PBS, 0.05% NaN ₃ , 40% Glycerol
Purification:	Antigen affinity purification
Conjugation:	Unconjugated
Storage:	Store at -20°C as received.
Stability:	Stable for 12 months from date of receipt.
Predicted Protein Size:	71 kDa
Gene Name:	potassium voltage-gated channel subfamily D member 1
Database Link:	NP_004970 Entrez Gene 3750 Human Q9NSA2
Background:	This gene encodes a multipass membrane protein that comprises the pore subunit of the voltage-gated A-type potassium channel, which functions in the repolarization of membrane action potentials. Activity of voltage-gated potassium channels is important in a number of physiological processes, among them the regulation of neurotransmitter release, heart rate, insulin secretion, and smooth muscle contraction.
Synonyms:	KV4.1



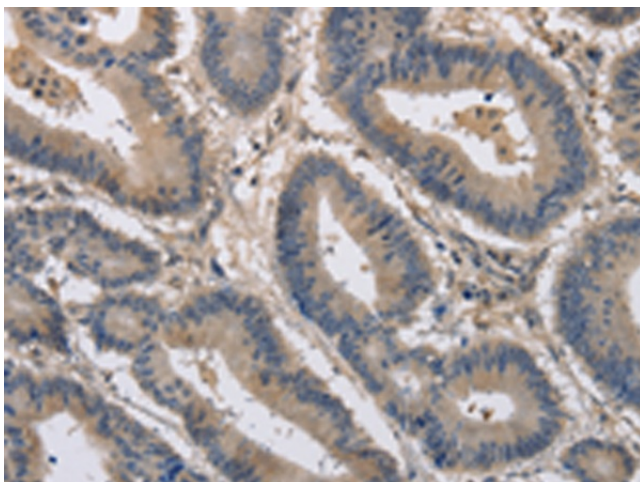
[View online »](#)

Protein Families: Druggable Genome, Ion Channels: Potassium, Transmembrane

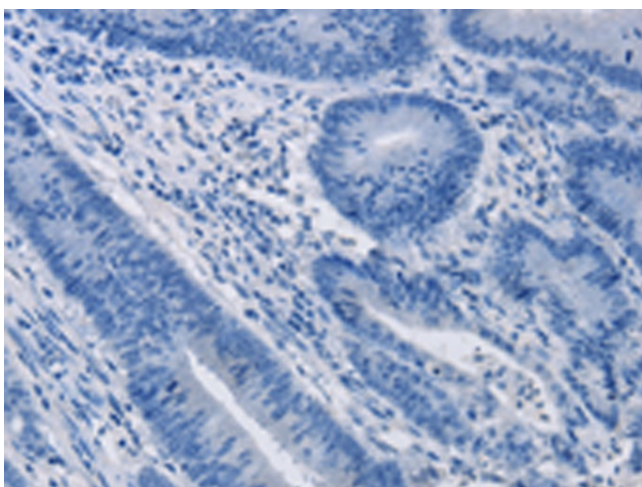
Product images:



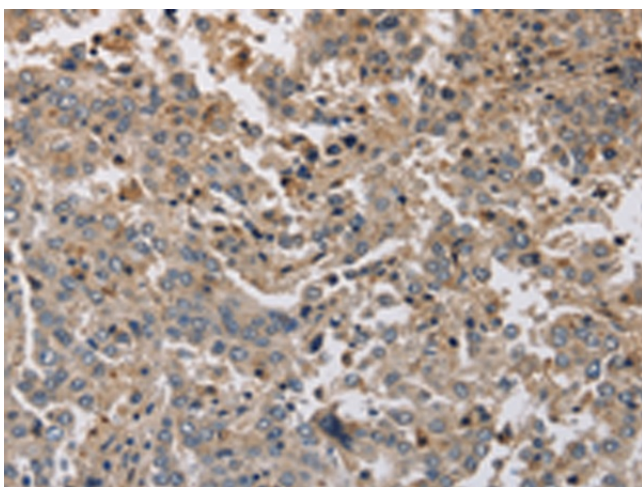
Gel: 6%SDS-PAGE
Lysate: 40 μ g
Lane: Human fetal liver tissue
Primary antibody: [TA351313] (KCND1 Antibody) at dilution 1/300
Secondary antibody: Goat anti rabbit IgG at 1/8000 dilution
Exposure time: 5 seconds



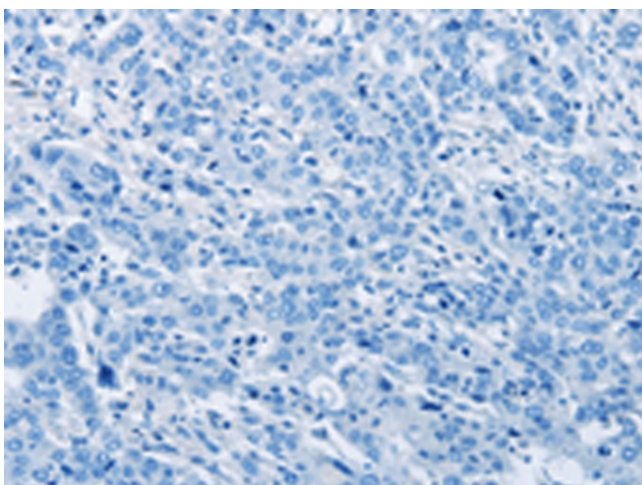
Immunohistochemistry of paraffin-embedded Human colon cancer tissue using [TA351313] (KCND1 Antibody) at dilution 1/20 (Original magnification: \times 200)



Immunohistochemistry of paraffin-embedded Human colon cancer tissue using [TA351313] (KCND1 Antibody) at dilution 1/20, treated with synthetic peptide. (Original magnification: $\times 200$)



Immunohistochemistry of paraffin-embedded Human liver cancer tissue using [TA351313] (KCND1 Antibody) at dilution 1/20 (Original magnification: $\times 200$)



Immunohistochemistry of paraffin-embedded Human liver cancer tissue using [TA351313] (KCND1 Antibody) at dilution 1/20, treated with synthetic peptide. (Original magnification: $\times 200$)