

Product datasheet for **TA351311**

KDM4C Rabbit Polyclonal Antibody

Product data:

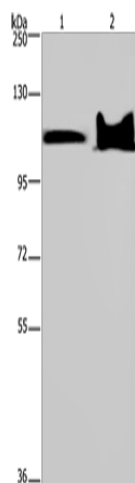
Product Type:	Primary Antibodies
Applications:	WB
Recommended Dilution:	WB: 500-2000 WB positive control: Mouse heart and brain tissue
Reactivity:	Human, Mouse
Host:	Rabbit
Isotype:	IgG
Clonality:	Polyclonal
Immunogen:	Synthetic peptide of human KDM4C
Formulation:	pH7.4 PBS, 0.05% NaN ₃ , 40% Glycerol
Concentration:	lot specific
Purification:	Antigen affinity purification
Conjugation:	Unconjugated
Storage:	Store at -20°C as received.
Stability:	Stable for 12 months from date of receipt.
Predicted Protein Size:	120 kDa
Gene Name:	lysine demethylase 4C
Database Link:	NP_001140167 Entrez Gene 76804 Mouse Entrez Gene 23081 Human Q9H3R0
Background:	This gene is a member of the Jumonji domain 2 (JMJD2) family and encodes a protein with one JmjC domain, one JmjN domain, two PHD-type zinc fingers, and two Tudor domains. This nuclear protein functions as a trimethylation-specific demethylase, converting specific trimethylated histone residues to the dimethylated form. Chromosomal aberrations and increased transcriptional expression of this gene are associated with esophageal squamous cell carcinoma. Alternative splicing results in multiple transcript variants.
Synonyms:	GASC1; JHDM3C; JMJD2C; TDRD14C



[View online »](#)

Protein Families: Druggable Genome, Transcription Factors

Product images:



Gel: 6%SDS-PAGE
Lysate: 40 μ g
Lane 1-2: Mouse heart tissue
Mouse brain tissue
Primary antibody: TA351311 (KDM4C Antibody) at
dilution 1/800
Secondary antibody: Goat anti rabbit IgG at
1/8000 dilution
Exposure time: 1 minute