

## Product datasheet for **TA351310S**

### KDM4A Rabbit Polyclonal Antibody

#### Product data:

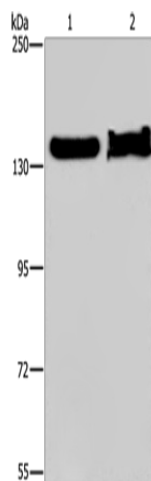
Product Type:	Primary Antibodies
Applications:	IHC, WB
Recommended Dilution:	WB: 500-2000 WB positive control: NIH/3T3 cells and mouse liver tissue IHC: 50-200 Positive control: Human esophagus cancer Predicted cell location: Cytoplasm and Nucleus
Reactivity:	Human, Mouse
Host:	Rabbit
Isotype:	IgG
Clonality:	Polyclonal
Immunogen:	Synthetic peptide of human KDM4A
Formulation:	pH7.4 PBS, 0.05% NaN <sub>3</sub> , 40% Glycerol
Purification:	Antigen affinity purification
Conjugation:	Unconjugated
Storage:	Store at -20°C as received.
Stability:	Stable for 12 months from date of receipt.
Predicted Protein Size:	121 kDa
Gene Name:	lysine demethylase 4A
Database Link:	<a href="#">NP_055478</a> <a href="#">Entrez Gene 230674 Mouse</a> <a href="#">Entrez Gene 9682 Human</a> <a href="#">O75164</a>
Background:	This gene is a member of the Jumonji domain 2 (JMJD2) family and encodes a protein containing a JmjN domain, a JmjC domain, a JD2H domain, two TUDOR domains, and two PHD-type zinc fingers. This nuclear protein functions as a trimethylation-specific demethylase, converting specific trimethylated histone residues to the dimethylated form, and as a transcriptional repressor.
Synonyms:	JHDM3A; JMJD2; JMJD2A; TDRD14A



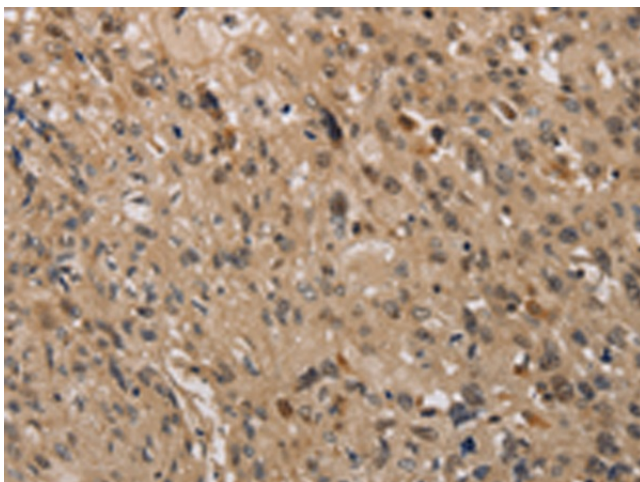
[View online »](#)

Protein Families: Druggable Genome, Transcription Factors

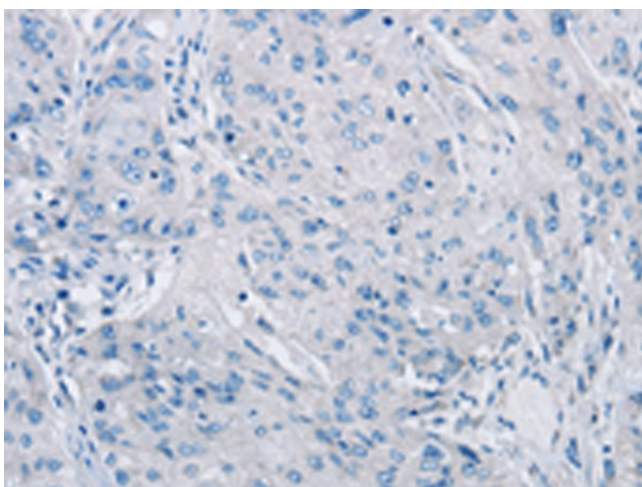
### Product images:



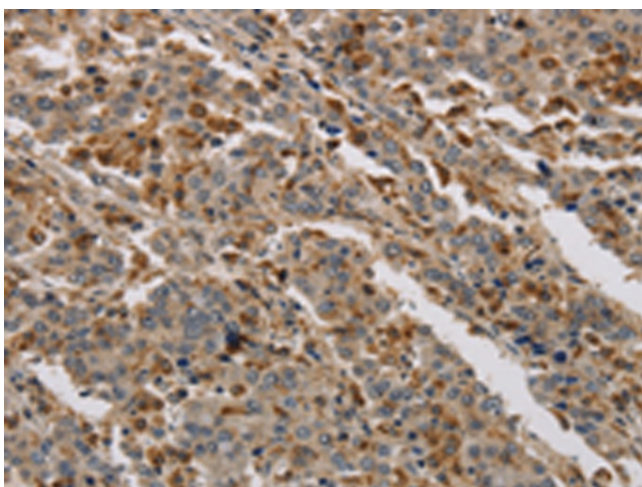
Gel: 6%SDS-PAGE  
Lysate: 40 µg  
Lane 1-2: NIH/3T3 cells  
mouse liver tissue  
Primary antibody: [TA351310] (KDM4A Antibody)  
at dilution 1/650  
Secondary antibody: Goat anti rabbit IgG at  
1/8000 dilution  
Exposure time: 5 minutes



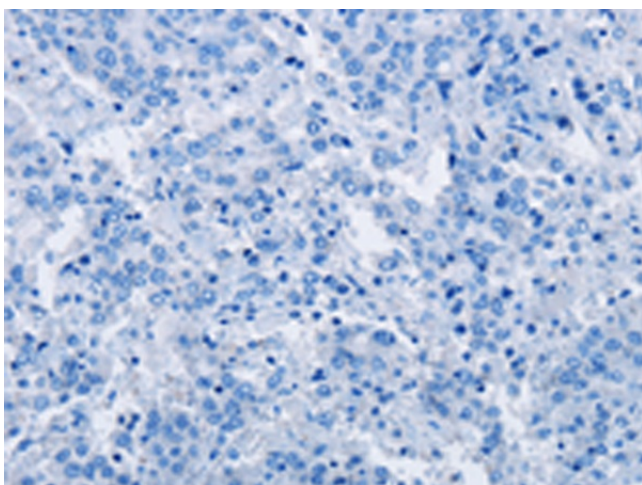
Immunohistochemistry of paraffin-embedded  
Human esophagus cancer tissue using  
[TA351310] (KDM4A Antibody) at dilution 1/40  
(Original magnification: ×200)



Immunohistochemistry of paraffin-embedded Human esophagus cancer tissue using [TA351310] (KDM4A Antibody) at dilution 1/40, treated with synthetic peptide. (Original magnification:  $\times 200$ )



Immunohistochemistry of paraffin-embedded Human liver cancer tissue using [TA351310] (KDM4A Antibody) at dilution 1/40 (Original magnification:  $\times 200$ )



Immunohistochemistry of paraffin-embedded Human liver cancer tissue using [TA351310] (KDM4A Antibody) at dilution 1/40, treated with synthetic peptide. (Original magnification:  $\times 200$ )