

Product datasheet for **TA351310**

KDM4A Rabbit Polyclonal Antibody

Product data:

Product Type:	Primary Antibodies
Applications:	IHC, WB
Recommended Dilution:	WB: 500-2000 WB positive control: NIH/3T3 cells and mouse liver tissue IHC: 50-200 Positive control: Human esophagus cancer Predicted cell location: Cytoplasm and Nucleus
Reactivity:	Human, Mouse
Host:	Rabbit
Isotype:	IgG
Clonality:	Polyclonal
Immunogen:	Synthetic peptide of human KDM4A
Formulation:	pH7.4 PBS, 0.05% NaN ₃ , 40% Glycerol
Concentration:	lot specific
Purification:	Antigen affinity purification
Conjugation:	Unconjugated
Storage:	Store at -20°C as received.
Stability:	Stable for 12 months from date of receipt.
Predicted Protein Size:	121 kDa
Gene Name:	lysine demethylase 4A
Database Link:	NP_055478 Entrez Gene 230674 Mouse Entrez Gene 9682 Human O75164

Background: This gene is a member of the Jumonji domain 2 (JMJD2) family and encodes a protein containing a JmjN domain, a JmjC domain, a JD2H domain, two TUDOR domains, and two PHD-type zinc fingers. This nuclear protein functions as a trimethylation-specific demethylase, converting specific trimethylated histone residues to the dimethylated form, and as a transcriptional repressor.

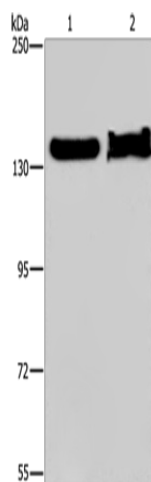


[View online »](#)

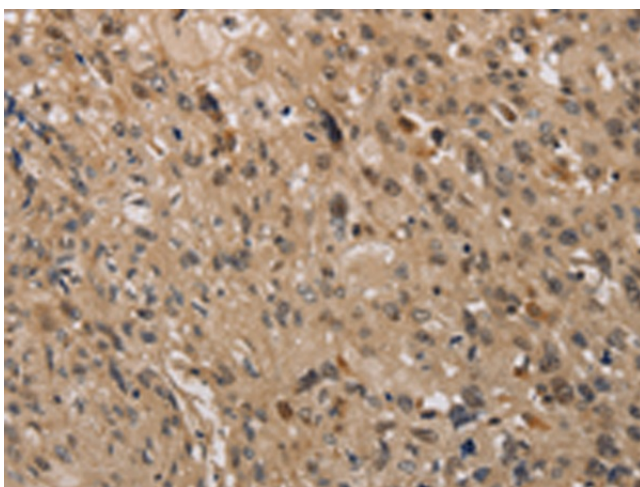
Synonyms: JHDM3A; JMJD2; JMJD2A; TDRD14A

Protein Families: Druggable Genome, Transcription Factors

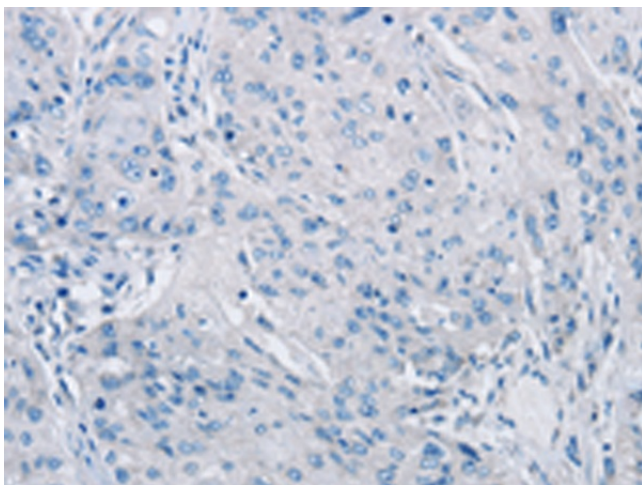
Product images:



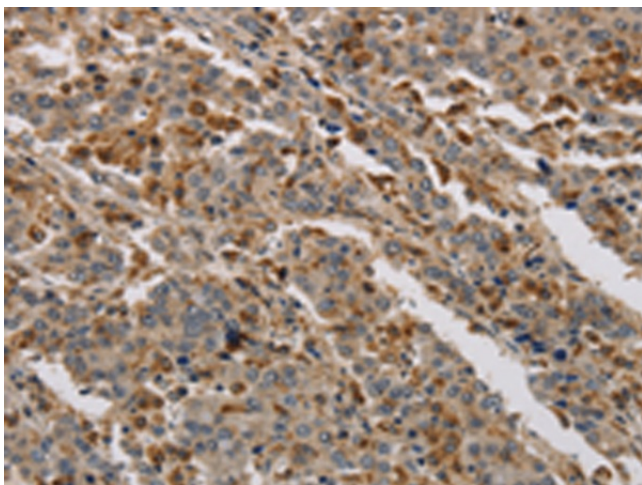
Gel: 6%SDS-PAGE
Lysate: 40 μ g
Lane 1-2: NIH/3T3 cells
mouse liver tissue
Primary antibody: TA351310 (KDM4A Antibody) at dilution 1/650
Secondary antibody: Goat anti rabbit IgG at 1/8000 dilution
Exposure time: 5 minutes



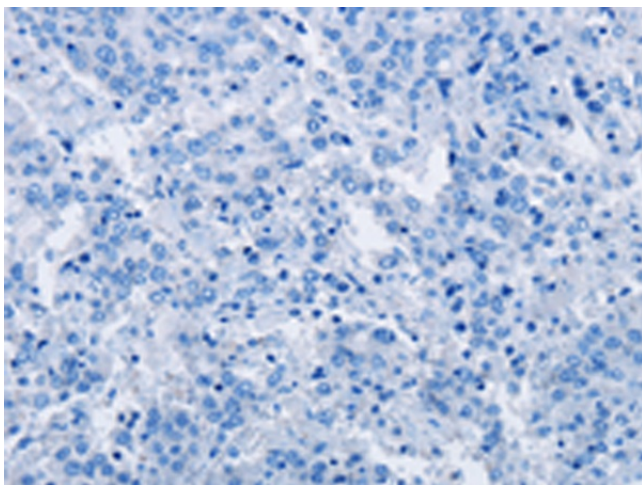
Immunohistochemistry of paraffin-embedded Human esophagus cancer tissue using TA351310 (KDM4A Antibody) at dilution 1/40 (Original magnification: \times 200)



Immunohistochemistry of paraffin-embedded Human esophagus cancer tissue using TA351310 (KDM4A Antibody) at dilution 1/40, treated with synthetic peptide. (Original magnification: x200)



Immunohistochemistry of paraffin-embedded Human liver cancer tissue using TA351310 (KDM4A Antibody) at dilution 1/40 (Original magnification: x200)



Immunohistochemistry of paraffin-embedded Human liver cancer tissue using TA351310 (KDM4A Antibody) at dilution 1/40, treated with synthetic peptide. (Original magnification: x200)