

Product datasheet for **TA351306S**

ITPR3 Rabbit Polyclonal Antibody

Product data:

| | |
|-----------------------|---|
| Product Type: | Primary Antibodies |
| Applications: | IHC |
| Recommended Dilution: | IHC: 50-200 Positive control: Human colon cancer Predicted cell location: Cytoplasm |
| Reactivity: | Human |
| Host: | Rabbit |
| Isotype: | IgG |
| Clonality: | Polyclonal |
| Immunogen: | Synthetic peptide of human ITPR3 |
| Formulation: | pH7.4 PBS, 0.05% NaN ₃ , 40% Glycerol |
| Purification: | Antigen affinity purification |
| Conjugation: | Unconjugated |
| Storage: | Store at -20°C as received. |
| Stability: | Stable for 12 months from date of receipt. |
| Gene Name: | inositol 1,4,5-trisphosphate receptor type 3 |
| Database Link: | NP_002215 Entrez Gene 3710 Human Q14573 |

Background: This gene encodes a receptor for inositol 1,4,5-trisphosphate, a second messenger that mediates the release of intracellular calcium. The receptor contains a calcium channel at the C-terminus and the ligand-binding site at the N-terminus. Knockout studies in mice suggest that type 2 and type 3 inositol 1,4,5-trisphosphate receptors play a key role in exocrine secretion underlying energy metabolism and growth.

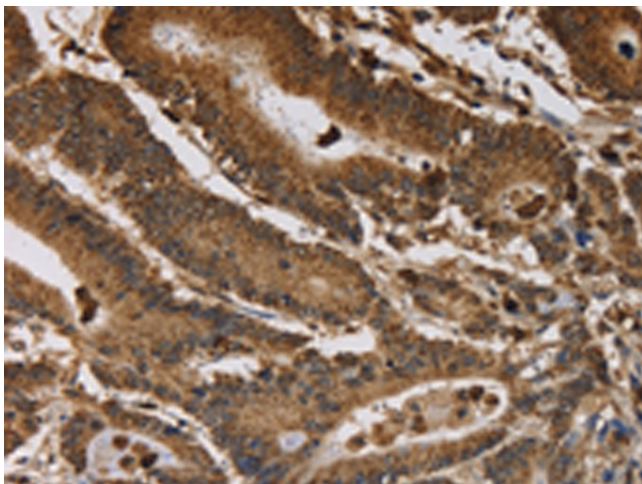
Synonyms: IP3R; IP3R3
Protein Families: Druggable Genome, Transmembrane



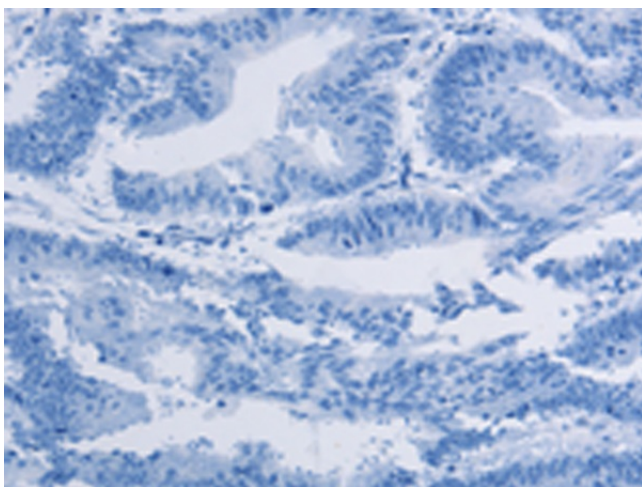
[View online »](#)

Protein Pathways: Alzheimer's disease, Calcium signaling pathway, Gap junction, GnRH signaling pathway, Long-term depression, Long-term potentiation, Oocyte meiosis, Phosphatidylinositol signaling system, Taste transduction, Vascular smooth muscle contraction

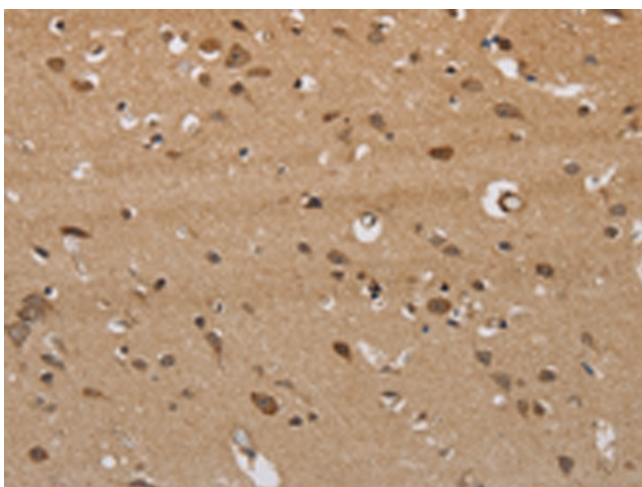
Product images:



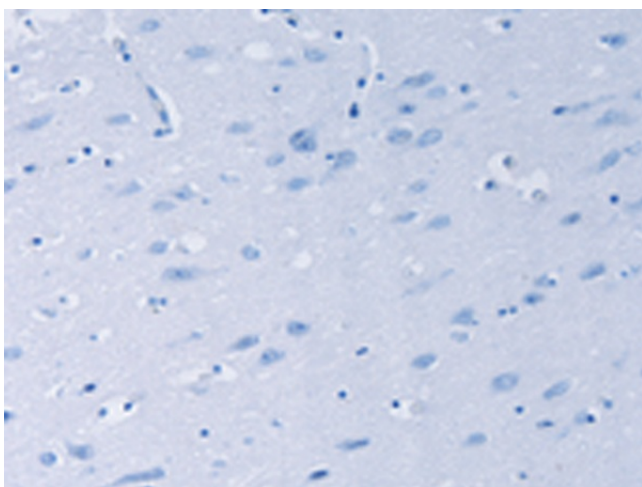
Immunohistochemistry of paraffin-embedded Human colon cancer tissue using [TA351306] (ITPR3 Antibody) at dilution 1/40 (Original magnification: $\times 200$)



Immunohistochemistry of paraffin-embedded Human colon cancer tissue using [TA351306] (ITPR3 Antibody) at dilution 1/40, treated with synthetic peptide. (Original magnification: $\times 200$)



Immunohistochemistry of paraffin-embedded Human brain tissue using [TA351306] (ITPR3 Antibody) at dilution 1/40 (Original magnification: ×200)



Immunohistochemistry of paraffin-embedded Human brain tissue using [TA351306] (ITPR3 Antibody) at dilution 1/40, treated with synthetic peptide. (Original magnification: ×200)