

## Product datasheet for **TA351304S**

### IP3 receptor (ITPR1) Rabbit Polyclonal Antibody

#### Product data:

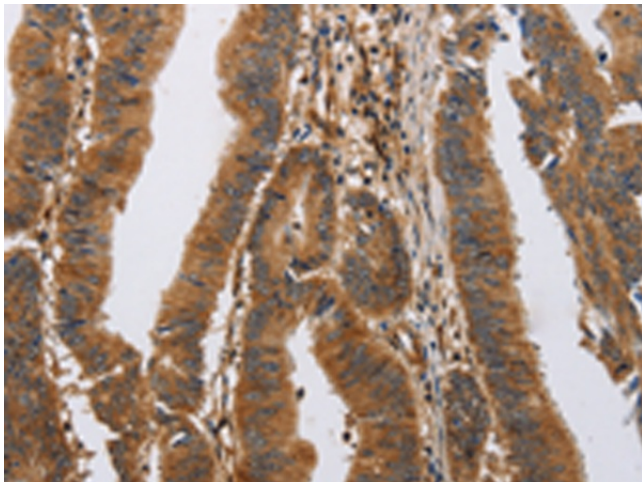
Product Type:	Primary Antibodies
Applications:	IHC
Recommended Dilution:	IHC: 50-200 Positive control: Human colon cancer Predicted cell location: Cytoplasm
Reactivity:	Human, Mouse, Rat
Host:	Rabbit
Isotype:	IgG
Clonality:	Polyclonal
Immunogen:	Synthetic peptide of human ITPR1
Formulation:	pH7.4 PBS, 0.05% NaN <sub>3</sub> , 40% Glycerol
Purification:	Antigen affinity purification
Conjugation:	Unconjugated
Storage:	Store at -20°C as received.
Stability:	Stable for 12 months from date of receipt.
Gene Name:	inositol 1,4,5-trisphosphate receptor type 1
Database Link:	<a href="#">NP_002213</a> <a href="#">Entrez Gene 16438 Mouse</a> <a href="#">Entrez Gene 25262 Rat</a> <a href="#">Entrez Gene 3708 Human</a> <a href="#">Q14643</a>
Background:	This gene encodes an intracellular receptor for inositol 1,4,5-trisphosphate. Upon stimulation by inositol 1,4,5-trisphosphate, this receptor mediates calcium release from the endoplasmic reticulum. Mutations in this gene cause spinocerebellar ataxia type 15, a disease associated with an heterogeneous group of cerebellar disorders. Multiple transcript variants have been identified for this gene.
Synonyms:	ACV; CLA4; INSP3R1; IP3R; IP3R1; PPP1R94; SCA15; SCA16; SCA29
Protein Families:	Druggable Genome, Transmembrane



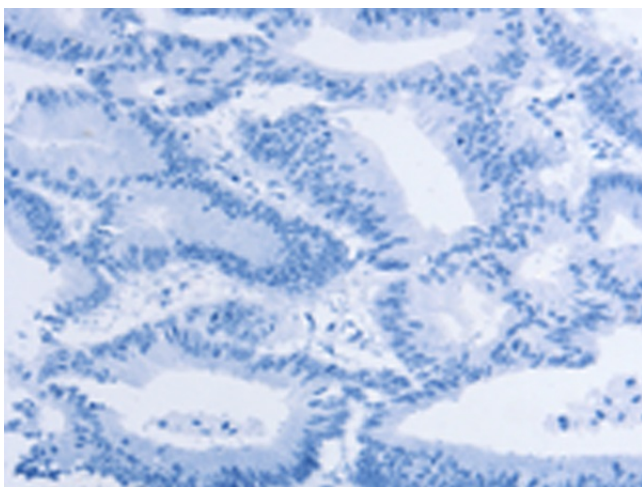
[View online »](#)

**Protein Pathways:** Alzheimer's disease, Calcium signaling pathway, Gap junction, GnRH signaling pathway, Huntington's disease, Long-term depression, Long-term potentiation, Oocyte meiosis, Phosphatidylinositol signaling system, Vascular smooth muscle contraction

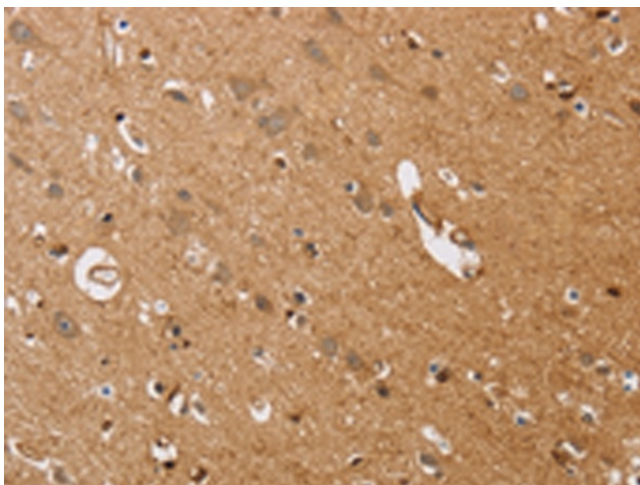
**Product images:**



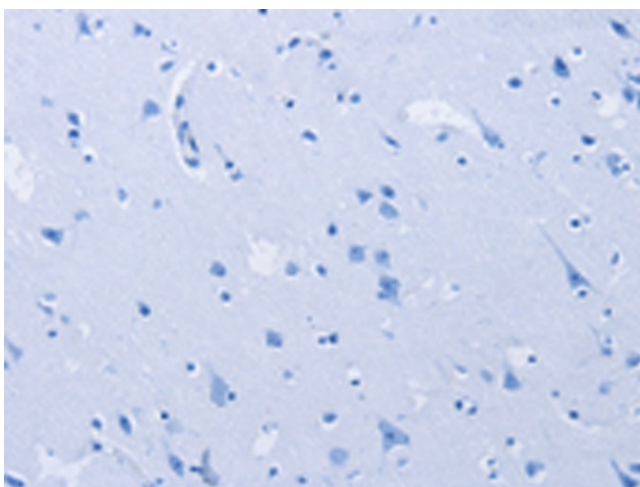
Immunohistochemistry of paraffin-embedded Human colon cancer tissue using [TA351304] (ITPR1 Antibody) at dilution 1/40 (Original magnification:  $\times 200$ )



Immunohistochemistry of paraffin-embedded Human colon cancer tissue using [TA351304] (ITPR1 Antibody) at dilution 1/40, treated with synthetic peptide. (Original magnification:  $\times 200$ )



Immunohistochemistry of paraffin-embedded Human brain tissue using [TA351304] (ITPR1 Antibody) at dilution 1/40 (Original magnification: ×200)



Immunohistochemistry of paraffin-embedded Human brain tissue using [TA351304] (ITPR1 Antibody) at dilution 1/40, treated with synthetic peptide. (Original magnification: ×200)