

## Product datasheet for **TA351302**

### **MUM1 (IRF4) Rabbit Polyclonal Antibody**

#### **Product data:**

Product Type:	Primary Antibodies
Applications:	WB
Recommended Dilution:	WB: 200-1000 WB positive control: Mouse lung tissue
Reactivity:	Human, Mouse
Host:	Rabbit
Isotype:	IgG
Clonality:	Polyclonal
Immunogen:	Synthetic peptide of human IRF4
Formulation:	pH7.4 PBS, 0.05% NaN <sub>3</sub> , 40% Glycerol
Concentration:	lot specific
Purification:	Antigen affinity purification
Conjugation:	Unconjugated
Storage:	Store at -20°C as received.
Stability:	Stable for 12 months from date of receipt.
Predicted Protein Size:	52 kDa
Gene Name:	interferon regulatory factor 4
Database Link:	<a href="#">NP_002451</a> <a href="#">Entrez Gene 16364 Mouse</a> <a href="#">Entrez Gene 3662 Human</a> <a href="#">Q15306</a>

**Background:** The protein encoded by this gene belongs to the IRF (interferon regulatory factor) family of transcription factors, characterized by a unique tryptophan pentad repeat DNA-binding domain. The IRFs are important in the regulation of interferons in response to infection by virus, and in the regulation of interferon-inducible genes. This family member is lymphocyte specific and negatively regulates Toll-like-receptor (TLR) signaling that is central to the activation of innate and adaptive immune systems. A chromosomal translocation involving this gene and the IgH locus, t(6;14)(p25;q32), may be a cause of multiple myeloma. Alternatively spliced transcript variants have been found for this gene.

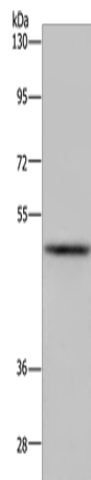


[View online »](#)

Synonyms: LSIRF; MUM1; NF-EM5; SHEP8

Protein Families: Druggable Genome, Transcription Factors

### Product images:



Gel: 8%SDS-PAGE  
Lysate: 40  $\mu$ g  
Lane: Mouse lung tissue  
Primary antibody: TA351302 (IRF4 Antibody) at dilution 1/300  
Secondary antibody: Goat anti rabbit IgG at 1/8000 dilution  
Exposure time: 2 minutes