

Product datasheet for **TA351301**

FABP2 Rabbit Polyclonal Antibody

Product data:

Product Type:	Primary Antibodies
Applications:	IHC, WB
Recommended Dilution:	WB: 500-2000 WB positive control: Human fetal intestine, mouse colon and large intestine tissue IHC: 50-200 Positive control: Human liver cancer Predicted cell location: Cytoplasm
Reactivity:	Human, Mouse, Rat
Host:	Rabbit
Isotype:	IgG
Clonality:	Polyclonal
Immunogen:	Synthetic peptide of human FABP2
Formulation:	pH7.4 PBS, 0.05% NaN ₃ , 40% Glycerol
Concentration:	lot specific
Purification:	Antigen affinity purification
Conjugation:	Unconjugated
Storage:	Store at -20°C as received.
Stability:	Stable for 12 months from date of receipt.
Predicted Protein Size:	15 kDa
Gene Name:	fatty acid binding protein 2
Database Link:	NP_000125 Entrez Gene 14079 Mouse Entrez Gene 25598 Rat Entrez Gene 2169 Human P12104



[View online »](#)

Background:

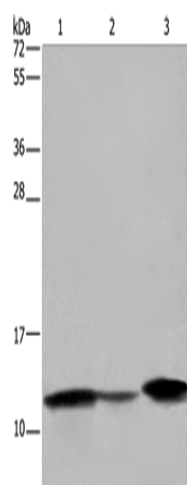
The intracellular fatty acid-binding proteins (FABPs) belong to a multigene family with nearly twenty identified members. FABPs are divided into at least three distinct types, namely the hepatic-, intestinal- and cardiac-type. They form 14-15 kDa proteins and are thought to participate in the uptake, intracellular metabolism and/or transport of long-chain fatty acids. They may also be responsible in the modulation of cell growth and proliferation. Intestinal fatty acid-binding protein 2 gene contains four exons and is an abundant cytosolic protein in small intestine epithelial cells. This gene has a polymorphism at codon 54 that identified an alanine-encoding allele and a threonine-encoding allele. Thr-54 protein is associated with increased fat oxidation and insulin resistance.

Synonyms:

FABPI; I-FABP

Protein Pathways:

PPAR signaling pathway

Product images:

Gel: 10%SDS-PAGE

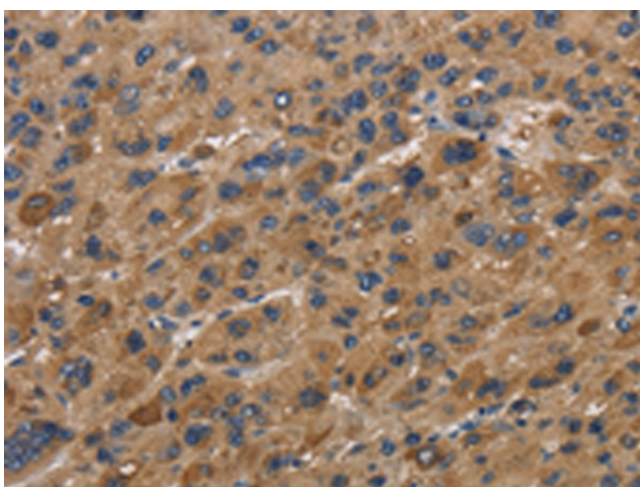
Lysate: 40 µg

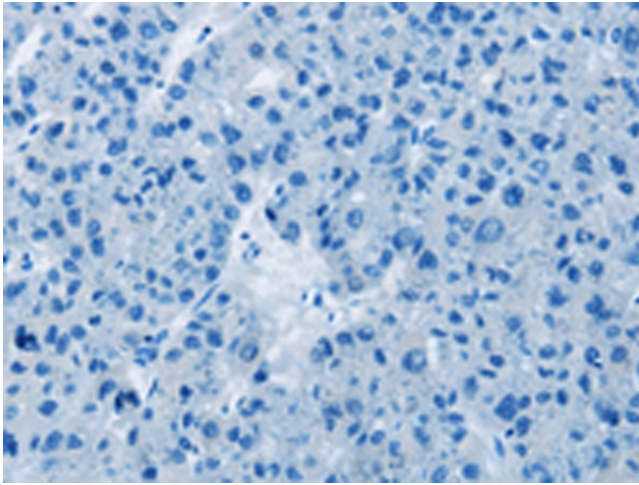
Lane 1-3: Human fetal intestine tissue
mouse colon tissue

Mouse large intestine tissue

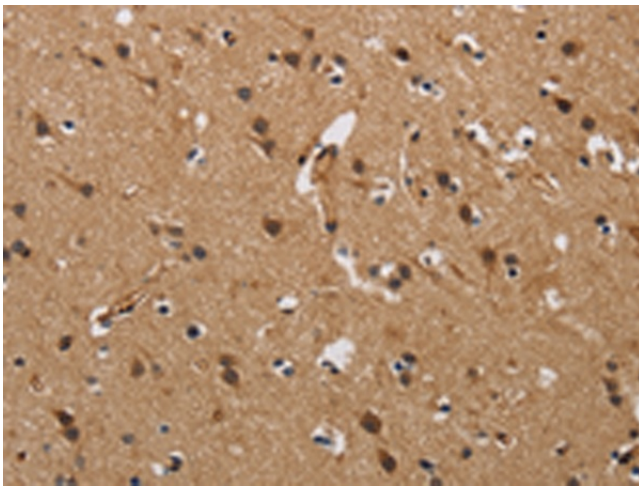
Primary antibody: TA351301 (FABP2 Antibody) at
dilution 1/450Secondary antibody: Goat anti rabbit IgG at
1/8000 dilution

Exposure time: 30 seconds

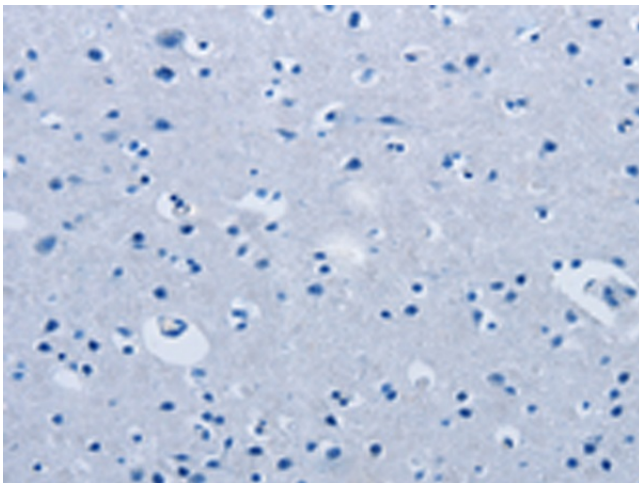
Immunohistochemistry of paraffin-embedded
Human liver cancer tissue using TA351301
(FABP2 Antibody) at dilution 1/40 (Original
magnification: ×200)



Immunohistochemistry of paraffin-embedded Human liver cancer tissue using TA351301 (FABP2 Antibody) at dilution 1/40, treated with synthetic peptide. (Original magnification: ×200)



Immunohistochemistry of paraffin-embedded Human brain tissue using TA351301 (FABP2 Antibody) at dilution 1/40 (Original magnification: ×200)



Immunohistochemistry of paraffin-embedded Human brain tissue using TA351301 (FABP2 Antibody) at dilution 1/40, treated with synthetic peptide. (Original magnification: ×200)