

## Product datasheet for **TA351300**

### liver FABP (FABP1) Rabbit Polyclonal Antibody

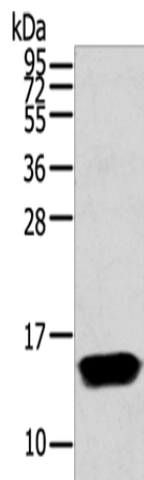
#### Product data:

|                         |   |
|-------------------------|---|
| Product Type:           | Primary Antibodies  |
| Applications:           | WB  |
| Recommended Dilution:   | WB: 500-2000<br>WB positive control: Mouse liver tissue   |
| Reactivity:             | Human, Mouse, Rat   |
| Host:                   | Rabbit  |
| Isotype:                | IgG   |
| Clonality:              | Polyclonal  |
| Immunogen:              | Synthetic peptide of human FABP1  |
| Formulation:            | pH7.4 PBS, 0.05% NaN <sub>3</sub> , 40% Glycerol  |
| Concentration:          | lot specific  |
| Purification:           | Antigen affinity purification   |
| Conjugation:            | Unconjugated  |
| Storage:                | Store at -20°C as received.   |
| Stability:              | Stable for 12 months from date of receipt.  |
| Predicted Protein Size: | 14 kDa  |
| Gene Name:              | fatty acid binding protein 1  |
| Database Link:          | <a href="#">NP_001434</a><br><a href="#">Entrez Gene 14080 Mouse</a> <a href="#">Entrez Gene 24360 Rat</a> <a href="#">Entrez Gene 2168 Human</a><br><a href="#">P07148</a>   |
| Background:             | This gene encodes the fatty acid binding protein found in liver. Fatty acid binding proteins are a family of small, highly conserved, cytoplasmic proteins that bind long-chain fatty acids and other hydrophobic ligands. This protein and FABP6 (the ileal fatty acid binding protein) are also able to bind bile acids. It is thought that FABPs roles include fatty acid uptake, transport, and metabolism. |
| Synonyms:               | FABPL; L-FABP   |
| Protein Pathways:       | PPAR signaling pathway  |



[View online »](#)

## Product images:



Gel: 12%SDS-PAGE

Lysate: 40  $\mu$ g

Lane: Mouse liver tissue

Primary antibody: TA351300 (FABP1 Antibody) at dilution 1/250

Secondary antibody: Goat anti rabbit IgG at 1/8000 dilution

Exposure time: 40 seconds