

Product datasheet for **TA351299**

Integrin beta 7 (ITGB7) Rabbit Polyclonal Antibody

Product data:

| | |
|-------------------------|---|
| Product Type: | Primary Antibodies |
| Applications: | IHC, WB |
| Recommended Dilution: | WB: 500-2000 WB positive control: 231 and A172 cell lysates IHC: 50-300 Positive control: Human liver cancer Predicted cell location: Cytoplasm |
| Reactivity: | Human |
| Host: | Rabbit |
| Isotype: | IgG |
| Clonality: | Polyclonal |
| Immunogen: | Synthetic peptide of human ITGB7 |
| Formulation: | pH7.4 PBS, 0.05% NaN ₃ , 40% Glycerol |
| Concentration: | lot specific |
| Purification: | Antigen affinity purification |
| Conjugation: | Unconjugated |
| Storage: | Store at -20°C as received. |
| Stability: | Stable for 12 months from date of receipt. |
| Predicted Protein Size: | 87 kDa |
| Gene Name: | integrin subunit beta 7 |
| Database Link: | NP_000880 Entrez Gene 3695 Human P26010 |



[View online »](#)

Background:

This gene encodes a protein that is a member of the integrin superfamily. Members of this family are adhesion receptors that function in signaling from the extracellular matrix to the cell. Integrins are heterodimeric integral membrane proteins composed of an alpha chain and a beta chain. The encoded protein forms dimers with an alpha4 chain or an alphaE chain and plays a role in leukocyte adhesion. Dimerization with alpha4 forms a homing receptor for migration of lymphocytes to the intestinal mucosa and Peyer's patches. Dimerization with alphaE permits binding to the ligand epithelial cadherin, a calcium-dependent adhesion molecule. Alternate splicing results in multiple transcript variants. Additional alternatively spliced transcript variants of this gene have been described, but their full-length nature is not known.

Synonyms:

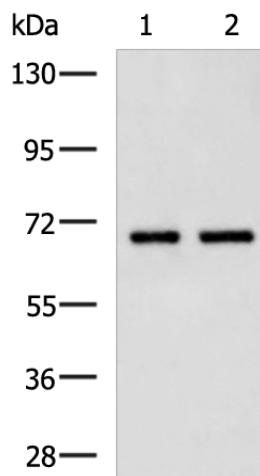
beta 7; integrin; integrin beta 7 subunit

Protein Families:

Druggable Genome, Transmembrane

Protein Pathways:

Arrhythmogenic right ventricular cardiomyopathy (ARVC), Cell adhesion molecules (CAMs), Dilated cardiomyopathy, ECM-receptor interaction, Focal adhesion, Hypertrophic cardiomyopathy (HCM), Regulation of actin cytoskeleton

Product images:

Gel: 6%SDS-PAGE

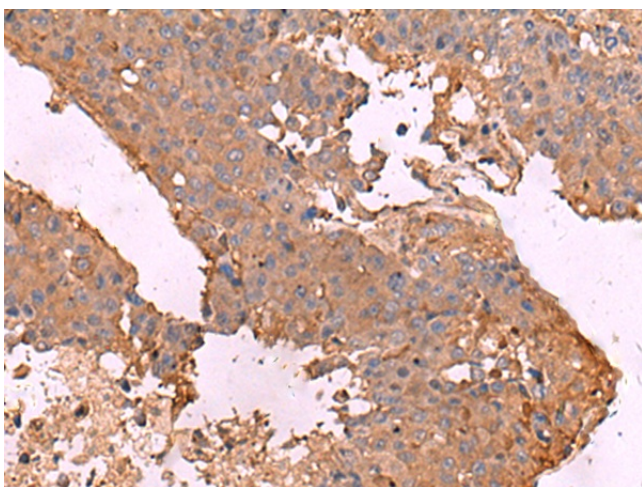
Lysate: 40 µg

Lane 1-2: 231 and A172 cell lysates

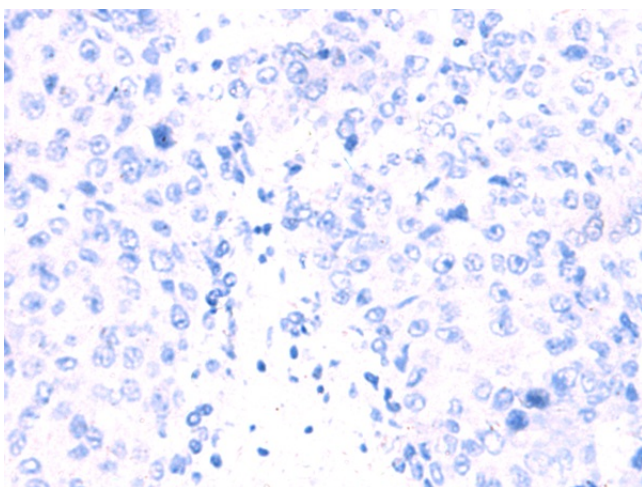
Primary antibody: TA351299 (ITGB7 Antibody) at dilution 1/900

Secondary antibody: Goat anti rabbit IgG at 1/5000 dilution

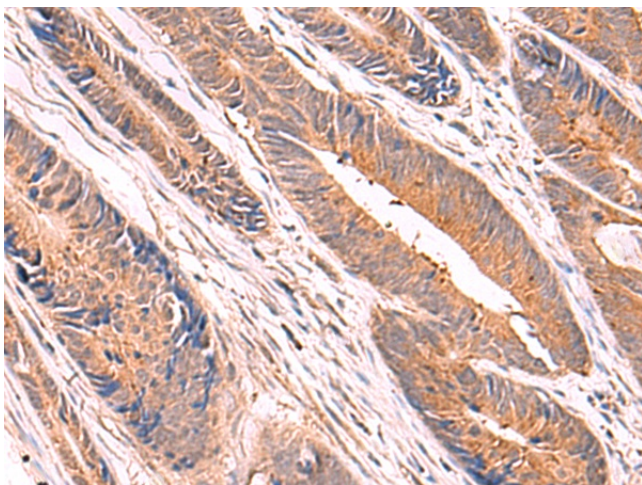
Exposure time: 5 minutes



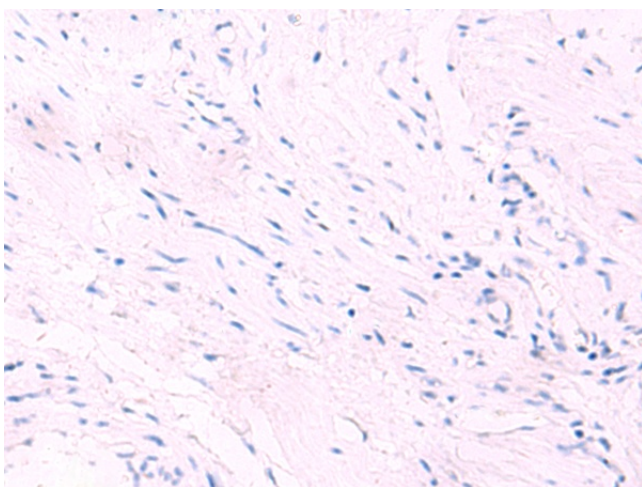
Immunohistochemistry of paraffin-embedded Human liver cancer tissue using TA351299 (ITGB7 Antibody) at dilution 1/40 (Original magnification: $\times 200$)



Immunohistochemistry of paraffin-embedded Human liver cancer tissue using TA351299 (ITGB7 Antibody) at dilution 1/40, treated with synthetic peptide. (Original magnification: $\times 200$)



Immunohistochemistry of paraffin-embedded Human colorectal cancer tissue using TA351299 (ITGB7 Antibody) at dilution 1/40 (Original magnification: $\times 200$)



Immunohistochemistry of paraffin-embedded Human colorectal cancer tissue using TA351299 (ITGB7 Antibody) at dilution 1/40, treated with synthetic peptide. (Original magnification: ×200)