

Product datasheet for **TA351298S**

ITGA11 Rabbit Polyclonal Antibody

Product data:

Product Type:	Primary Antibodies
Applications:	IHC, WB
Recommended Dilution:	WB: 500-2000 WB positive control: K562, 293T, HepG2, HeLa, A549 cell lysates IHC: 50-200 Positive control: Human liver cancer Predicted cell location: Cytoplasm
Reactivity:	Human
Host:	Rabbit
Isotype:	IgG
Clonality:	Polyclonal
Immunogen:	Synthetic peptide of human ITGA11
Formulation:	pH7.4 PBS, 0.05% NaN ₃ , 40% Glycerol
Purification:	Antigen affinity purification
Conjugation:	Unconjugated
Storage:	Store at -20°C as received.
Stability:	Stable for 12 months from date of receipt.
Predicted Protein Size:	133 kDa
Gene Name:	integrin subunit alpha 11
Database Link:	NP_001004439 Entrez Gene 22801 Human Q9UKX5

Background: This gene encodes an alpha integrin. Integrins are heterodimeric integral membrane proteins composed of an alpha chain and a beta chain. This protein contains an I domain, is expressed in muscle tissue, dimerizes with beta 1 integrin in vitro, and appears to bind collagen in this form. Therefore, the protein may be involved in attaching muscle tissue to the extracellular matrix. Alternative transcriptional splice variants have been found for this gene, but their biological validity is not determined.



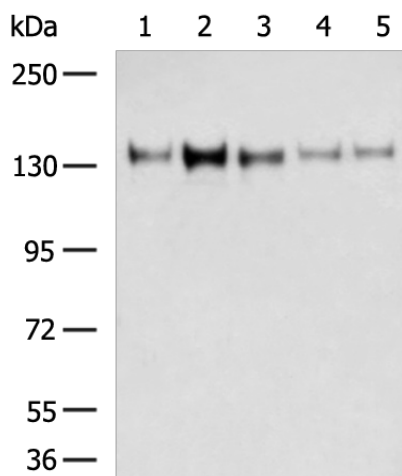
[View online »](#)

Synonyms: HsT18964

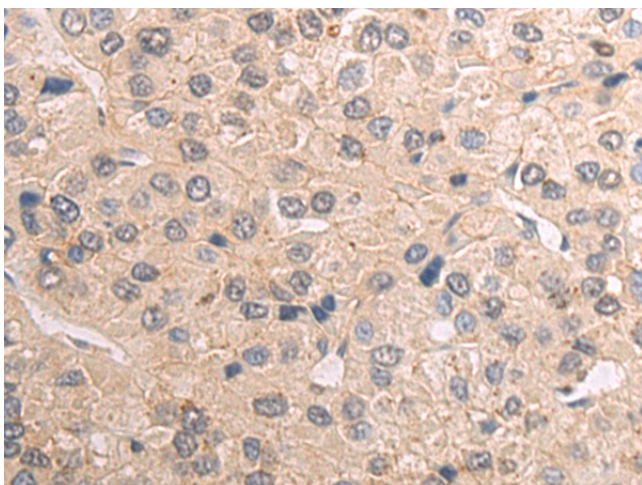
Protein Families: Druggable Genome, Transmembrane

Protein Pathways: Arrhythmogenic right ventricular cardiomyopathy (ARVC), Dilated cardiomyopathy, ECM-receptor interaction, Focal adhesion, Hypertrophic cardiomyopathy (HCM), Regulation of actin cytoskeleton

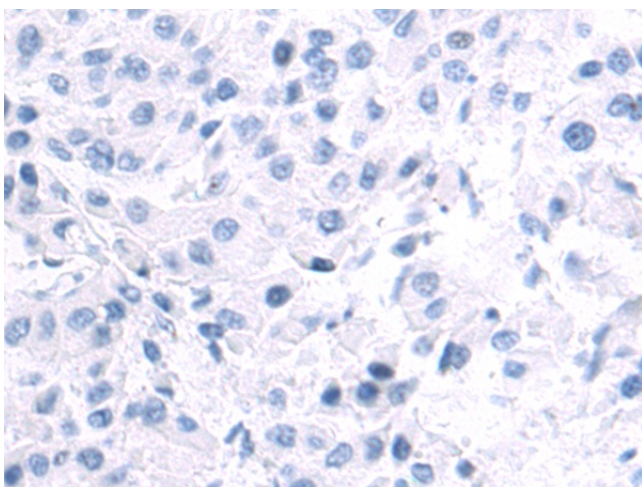
Product images:



Gel: 6%SDS-PAGE
Lysate: 40 μ g
Lane 1-5: A549
HeLa
293T
K562
HepG2 cell tissue lysates
Primary antibody: [TA351298] (ITGA11 Antibody)
at dilution 1/300
Secondary antibody: Goat anti rabbit IgG at
1/5000 dilution
Exposure time: 4 minutes



Immunohistochemistry of paraffin-embedded
Human liver cancer tissue using [TA351298]
(ITGA11 Antibody) at dilution 1/50 (Original
magnification: $\times 200$)



Immunohistochemistry of paraffin-embedded Human liver cancer tissue using [TA351298] (ITGA11 Antibody) at dilution 1/50, treated with synthetic peptide. (Original magnification: $\times 200$)