

Product datasheet for **TA351298**

ITGA11 Rabbit Polyclonal Antibody

Product data:

| | |
|-------------------------|--|
| Product Type: | Primary Antibodies |
| Applications: | IHC, WB |
| Recommended Dilution: | WB: 500-2000 WB positive control: K562, 293T, HepG2, Hela, A549 cell lysates IHC: 50-200 Positive control: Human liver cancer Predicted cell location: Cytoplasm |
| Reactivity: | Human |
| Host: | Rabbit |
| Isotype: | IgG |
| Clonality: | Polyclonal |
| Immunogen: | Synthetic peptide of human ITGA11 |
| Formulation: | pH7.4 PBS, 0.05% NaN ₃ , 40% Glycerol |
| Concentration: | lot specific |
| Purification: | Antigen affinity purification |
| Conjugation: | Unconjugated |
| Storage: | Store at -20°C as received. |
| Stability: | Stable for 12 months from date of receipt. |
| Predicted Protein Size: | 133 kDa |
| Gene Name: | integrin subunit alpha 11 |
| Database Link: | NP_001004439 Entrez Gene 22801 Human Q9UKX5 |



[View online »](#)

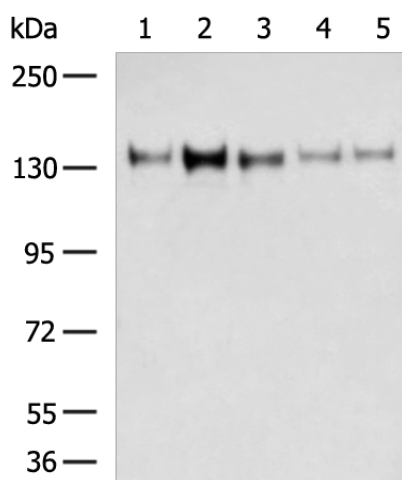
Background: This gene encodes an alpha integrin. Integrins are heterodimeric integral membrane proteins composed of an alpha chain and a beta chain. This protein contains an I domain, is expressed in muscle tissue, dimerizes with beta 1 integrin in vitro, and appears to bind collagen in this form. Therefore, the protein may be involved in attaching muscle tissue to the extracellular matrix. Alternative transcriptional splice variants have been found for this gene, but their biological validity is not determined.

Synonyms: HsT18964

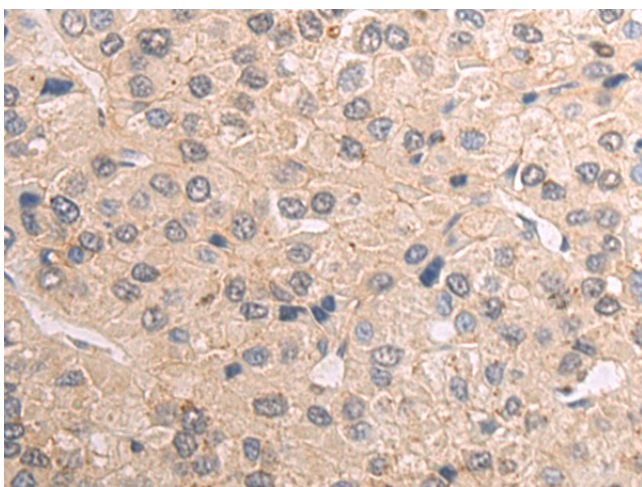
Protein Families: Druggable Genome, Transmembrane

Protein Pathways: Arrhythmogenic right ventricular cardiomyopathy (ARVC), Dilated cardiomyopathy, ECM-receptor interaction, Focal adhesion, Hypertrophic cardiomyopathy (HCM), Regulation of actin cytoskeleton

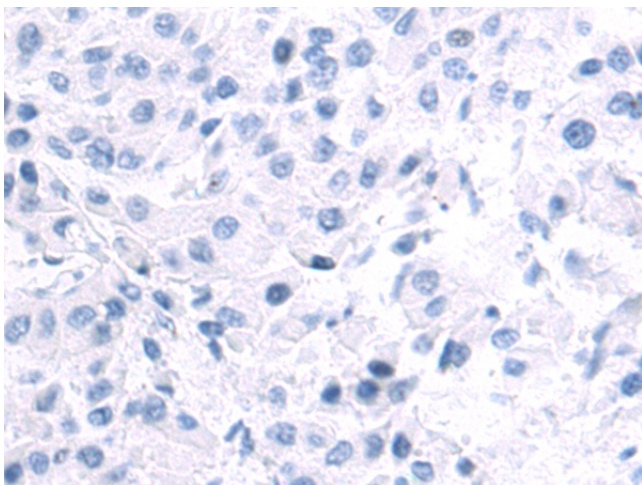
Product images:



Gel: 6%SDS-PAGE
Lysate: 40 µg
Lane 1-5: A549
Hela
293T
K562
HepG2 cell tissue lysates
Primary antibody: TA351298 (ITGA11 Antibody) at dilution 1/300
Secondary antibody: Goat anti rabbit IgG at 1/5000 dilution
Exposure time: 4 minutes



Immunohistochemistry of paraffin-embedded Human liver cancer tissue using TA351298 (ITGA11 Antibody) at dilution 1/50 (Original magnification: ×200)



Immunohistochemistry of paraffin-embedded Human liver cancer tissue using TA351298 (ITGA11 Antibody) at dilution 1/50, treated with synthetic peptide. (Original magnification: ×200)