

Product datasheet for **TA351292S**

IMPDH1 Rabbit Polyclonal Antibody

Product data:

Product Type:	Primary Antibodies
Applications:	IHC, WB
Recommended Dilution:	WB: 500-2000 WB positive control: Raji and 293T cells IHC: 25-100 Positive control: Human thyroid cancer Predicted cell location: Cytoplasm and Nucleus
Reactivity:	Human, Mouse, Rat
Host:	Rabbit
Isotype:	IgG
Clonality:	Polyclonal
Immunogen:	Synthetic peptide of human IMPDH1
Formulation:	pH7.4 PBS, 0.05% NaN ₃ , 40% Glycerol
Purification:	Antigen affinity purification
Conjugation:	Unconjugated
Storage:	Store at -20°C as received.
Stability:	Stable for 12 months from date of receipt.
Predicted Protein Size:	55 kDa
Gene Name:	IMP (inosine 5'-monophosphate) dehydrogenase 1
Database Link:	NP_000874 Entrez Gene 23917 MouseEntrez Gene 362329 RatEntrez Gene 3614 Human P20839
Background:	The protein encoded by this gene acts as a homotetramer to regulate cell growth. The encoded protein is an enzyme that catalyzes the synthesis of xanthine monophosphate (XMP) from inosine-5'-monophosphate (IMP). This is the rate-limiting step in the de novo synthesis of guanine nucleotides. Defects in this gene are a cause of retinitis pigmentosa type 10 (RP10). Several transcript variants encoding different isoforms have been found for this gene.
Synonyms:	IMPD; IMPD1; LCA11; RP10; sWSS2608



[View online »](#)

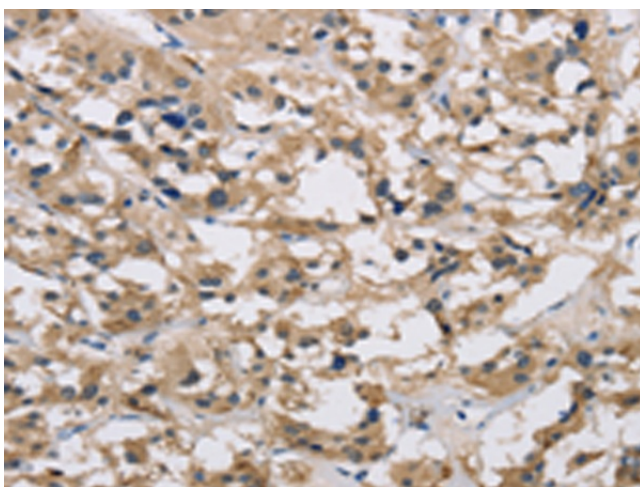
Protein Families: Druggable Genome

Protein Pathways: Drug metabolism - other enzymes, Metabolic pathways, Purine metabolism

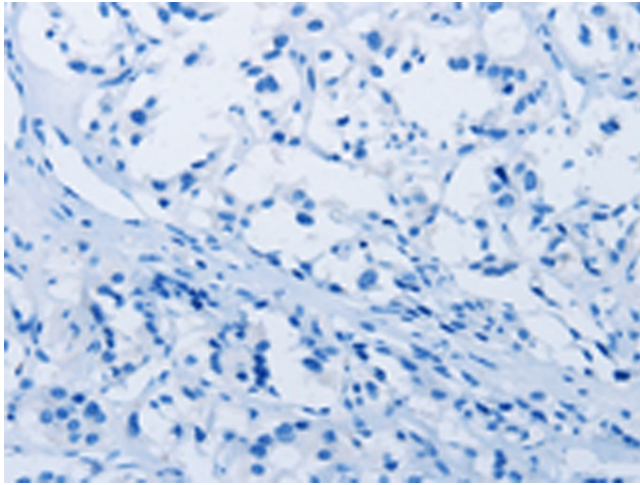
Product images:



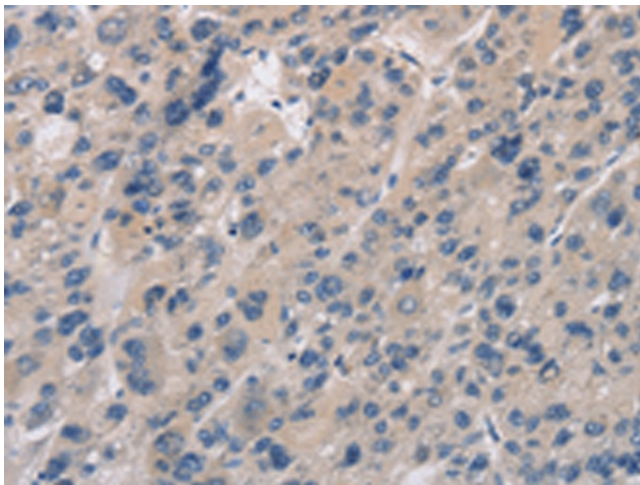
Gel: 8%SDS-PAGE
Lysate: 40 μ g
Lane 1-2: Raji cells
293T cells
Primary antibody: [TA351292] (IMPDH1 Antibody)
at dilution 1/500
Secondary antibody: Goat anti rabbit IgG at
1/8000 dilution
Exposure time: 30 seconds



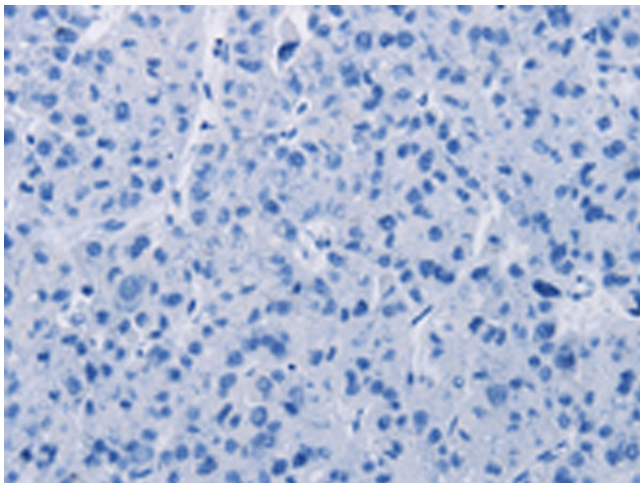
Immunohistochemistry of paraffin-embedded
Human thyroid cancer tissue using [TA351292]
(IMPDH1 Antibody) at dilution 1/20 (Original
magnification: \times 200)



Immunohistochemistry of paraffin-embedded Human thyroid cancer tissue using [TA351292] (IMPDH1 Antibody) at dilution 1/20, treated with synthetic peptide. (Original magnification: $\times 200$)



Immunohistochemistry of paraffin-embedded Human liver cancer tissue using [TA351292] (IMPDH1 Antibody) at dilution 1/20 (Original magnification: $\times 200$)



Immunohistochemistry of paraffin-embedded Human liver cancer tissue using [TA351292] (IMPDH1 Antibody) at dilution 1/20, treated with synthetic peptide. (Original magnification: $\times 200$)