

## Product datasheet for **TA351292**

### IMPDH1 Rabbit Polyclonal Antibody

#### Product data:

Product Type:	Primary Antibodies
Applications:	IHC, WB
Recommended Dilution:	WB: 500-2000 WB positive control: Raji and 293T cells IHC: 25-100 Positive control: Human thyroid cancer Predicted cell location: Cytoplasm and Nucleus
Reactivity:	Human, Mouse, Rat
Host:	Rabbit
Isotype:	IgG
Clonality:	Polyclonal
Immunogen:	Synthetic peptide of human IMPDH1
Formulation:	pH7.4 PBS, 0.05% NaN <sub>3</sub> , 40% Glycerol
Concentration:	lot specific
Purification:	Antigen affinity purification
Conjugation:	Unconjugated
Storage:	Store at -20°C as received.
Stability:	Stable for 12 months from date of receipt.
Predicted Protein Size:	55 kDa
Gene Name:	IMP (inosine 5'-monophosphate) dehydrogenase 1
Database Link:	<a href="#">NP_000874</a> <a href="#">Entrez Gene 23917 Mouse</a> <a href="#">Entrez Gene 362329 Rat</a> <a href="#">Entrez Gene 3614 Human</a> <a href="#">P20839</a>
Background:	The protein encoded by this gene acts as a homotetramer to regulate cell growth. The encoded protein is an enzyme that catalyzes the synthesis of xanthine monophosphate (XMP) from inosine-5'-monophosphate (IMP). This is the rate-limiting step in the de novo synthesis of guanine nucleotides. Defects in this gene are a cause of retinitis pigmentosa type 10 (RP10). Several transcript variants encoding different isoforms have been found for this gene.



[View online »](#)

**Synonyms:** IMPD; IMPD1; LCA11; RP10; sWSS2608

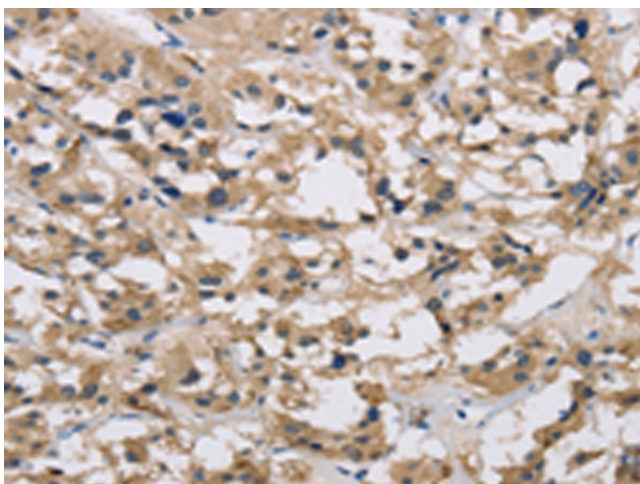
**Protein Families:** Druggable Genome

**Protein Pathways:** Drug metabolism - other enzymes, Metabolic pathways, Purine metabolism

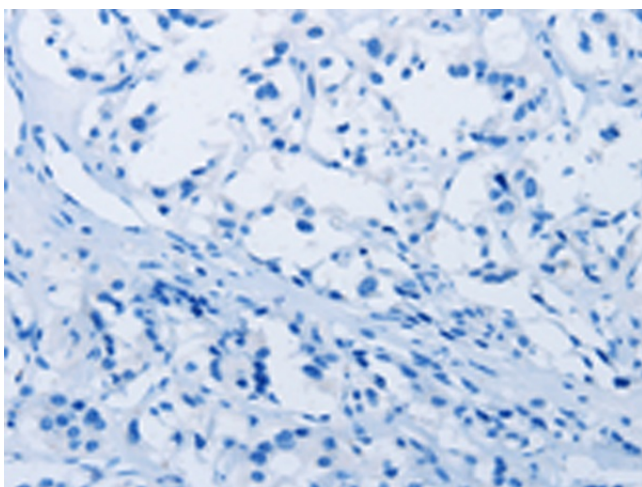
**Product images:**



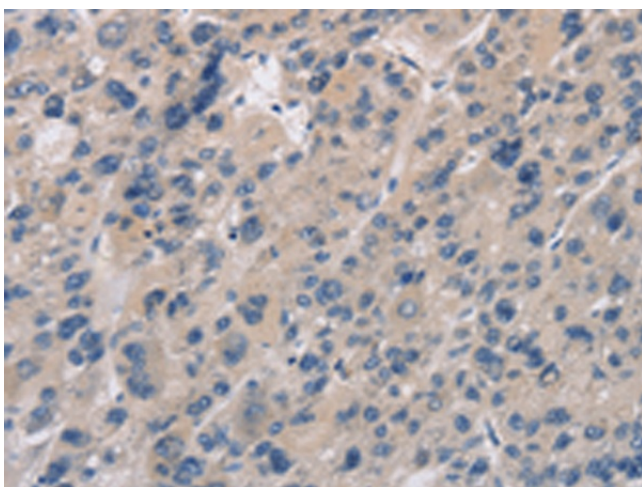
Gel: 8%SDS-PAGE  
Lysate: 40  $\mu$ g  
Lane 1-2: Raji cells  
293T cells  
Primary antibody: TA351292 (IMPDH1 Antibody)  
at dilution 1/500  
Secondary antibody: Goat anti rabbit IgG at  
1/8000 dilution  
Exposure time: 30 seconds



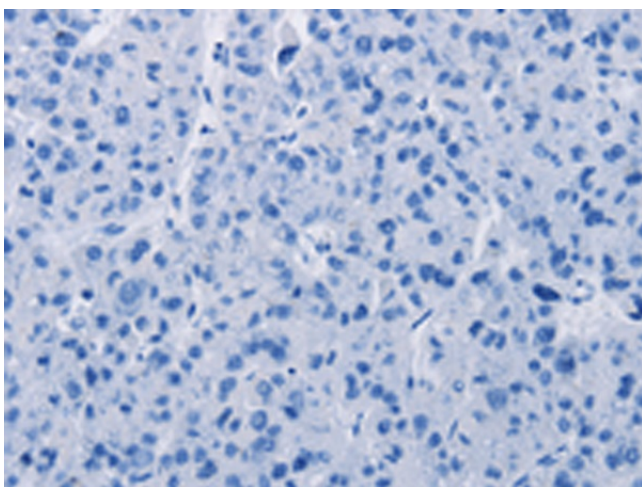
Immunohistochemistry of paraffin-embedded  
Human thyroid cancer tissue using TA351292  
(IMPDH1 Antibody) at dilution 1/20 (Original  
magnification:  $\times$ 200)



Immunohistochemistry of paraffin-embedded Human thyroid cancer tissue using TA351292 (IMPDH1 Antibody) at dilution 1/20, treated with synthetic peptide. (Original magnification: ×200)



Immunohistochemistry of paraffin-embedded Human liver cancer tissue using TA351292 (IMPDH1 Antibody) at dilution 1/20 (Original magnification: ×200)



Immunohistochemistry of paraffin-embedded Human liver cancer tissue using TA351292 (IMPDH1 Antibody) at dilution 1/20, treated with synthetic peptide. (Original magnification: ×200)