

Product datasheet for **TA351290**

CYBA Rabbit Polyclonal Antibody

Product data:

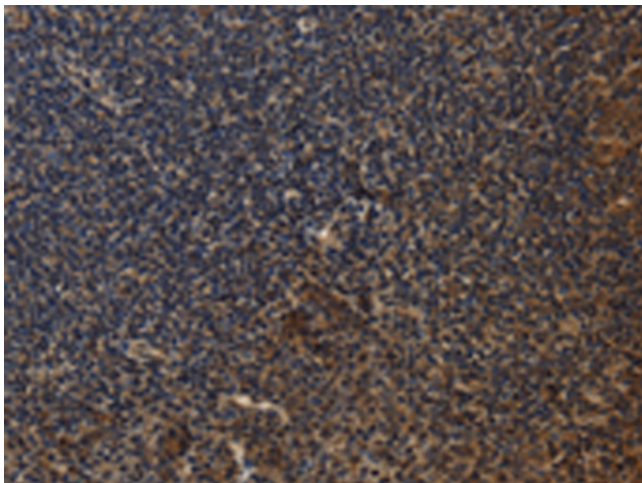
| | |
|-----------------------|--|
| Product Type: | Primary Antibodies |
| Applications: | IHC |
| Recommended Dilution: | IHC: 50-200 Positive control: Human tonsil Predicted cell location: Cytoplasm |
| Reactivity: | Human, Mouse, Rat |
| Host: | Rabbit |
| Isotype: | IgG |
| Clonality: | Polyclonal |
| Immunogen: | Synthetic peptide of human CYBA |
| Formulation: | pH7.4 PBS, 0.05% NaN ₃ , 40% Glycerol |
| Concentration: | lot specific |
| Purification: | Antigen affinity purification |
| Conjugation: | Unconjugated |
| Storage: | Store at -20°C as received. |
| Stability: | Stable for 12 months from date of receipt. |
| Gene Name: | cytochrome b-245 alpha chain |
| Database Link: | NP_000092 Entrez Gene 13057 Mouse Entrez Gene 79129 Rat Entrez Gene 1535 Human P13498 |
| Background: | Cytochrome b is comprised of a light chain (alpha) and a heavy chain (beta). This gene encodes the light, alpha subunit which has been proposed as a primary component of the microbicidal oxidase system of phagocytes. Mutations in this gene are associated with autosomal recessive chronic granulomatous disease (CGD), that is characterized by the failure of activated phagocytes to generate superoxide, which is important for the microbicidal activity of these cells. |
| Synonyms: | p22-PHOX |
| Protein Families: | Druggable Genome, Transmembrane |



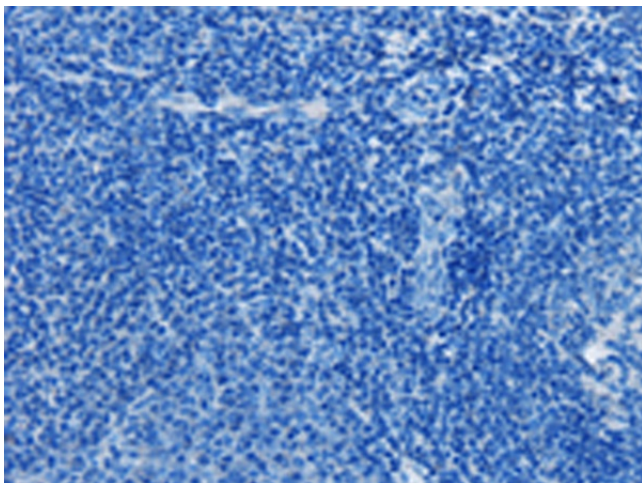
[View online »](#)

Protein Pathways: Leukocyte transendothelial migration

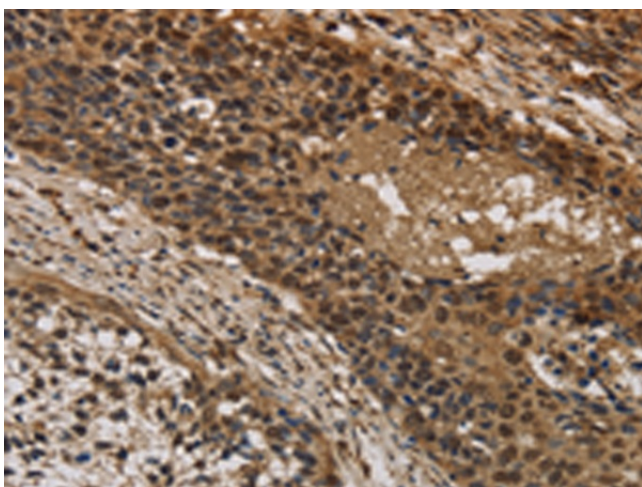
Product images:



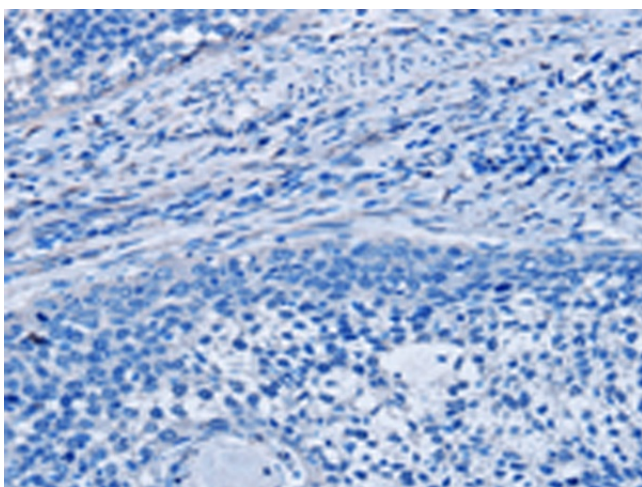
Immunohistochemistry of paraffin-embedded Human tonsil tissue using TA351290 (CYBA Antibody) at dilution 1/20 (Original magnification: x200)



Immunohistochemistry of paraffin-embedded Human tonsil tissue using TA351290 (CYBA Antibody) at dilution 1/20, treated with synthetic peptide. (Original magnification: x200)



Immunohistochemistry of paraffin-embedded Human cervical cancer tissue using TA351290 (CYBA Antibody) at dilution 1/20 (Original magnification: $\times 200$)



Immunohistochemistry of paraffin-embedded Human cervical cancer tissue using TA351290 (CYBA Antibody) at dilution 1/20, treated with synthetic peptide. (Original magnification: $\times 200$)