

Product datasheet for **TA351288S**

Synapsin I (SYN1) Rabbit Polyclonal Antibody

Product data:

Product Type:	Primary Antibodies
Applications:	IHC, WB
Recommended Dilution:	WB: 500-2000 WB positive control: A375 and 231 cells, 293T cells and human hepatocellular carcinoma tissue IHC: 50-200 Positive control: Human liver cancer Predicted cell location: Cytoplasm
Reactivity:	Human
Host:	Rabbit
Isotype:	IgG
Clonality:	Polyclonal
Immunogen:	Synthetic peptide of human SYN1
Formulation:	pH7.4 PBS, 0.05% NaN ₃ , 40% Glycerol
Purification:	Antigen affinity purification
Conjugation:	Unconjugated
Storage:	Store at -20°C as received.
Stability:	Stable for 12 months from date of receipt.
Predicted Protein Size:	74 kDa
Gene Name:	synapsin I
Database Link:	NP_598006 Entrez Gene 6853 Human P17600



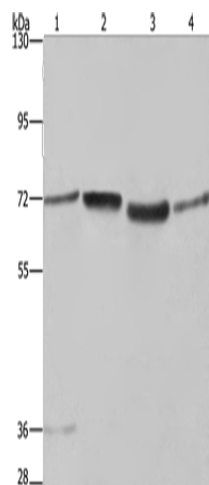
[View online »](#)

Background:

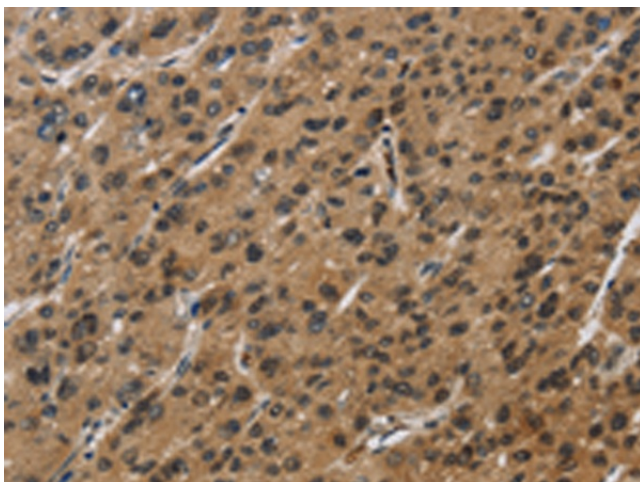
This gene is a member of the synapsin gene family. Synapsins encode neuronal phosphoproteins which associate with the cytoplasmic surface of synaptic vesicles. Family members are characterized by common protein domains, and they are implicated in synaptogenesis and the modulation of neurotransmitter release, suggesting a potential role in several neuropsychiatric diseases. This member of the synapsin family plays a role in regulation of axonogenesis and synaptogenesis. The protein encoded serves as a substrate for several different protein kinases and phosphorylation may function in the regulation of this protein in the nerve terminal. Mutations in this gene may be associated with X-linked disorders with primary neuronal degeneration such as Rett syndrome. Alternatively spliced transcript variants encoding different isoforms have been identified.

Synonyms:

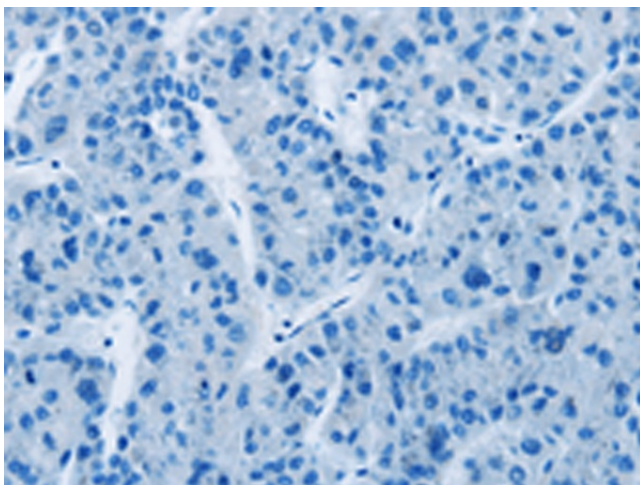
SYN1a; SYN1b; SYNI

Product images:


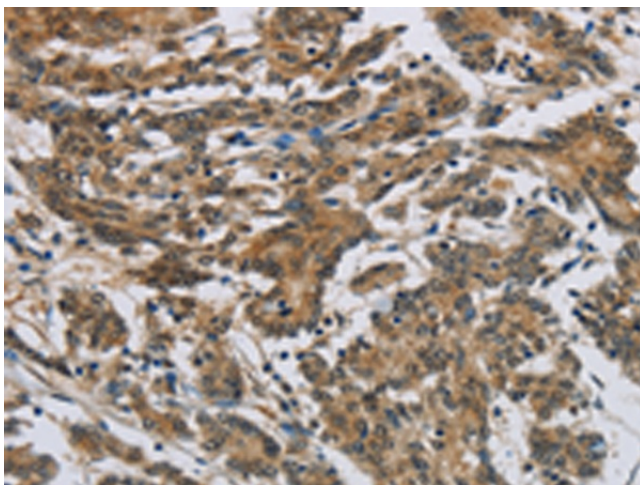
Gel: 6%SDS-PAGE
 Lysate: 40 µg
 Lane 1-4: A375 cells
 231 cells
 293T cells
 human hepatocellular carcinoma tissue
 Primary antibody: [TA351288] (SYN1 Antibody) at dilution 1/550
 Secondary antibody: Goat anti rabbit IgG at 1/8000 dilution
 Exposure time: 40 seconds



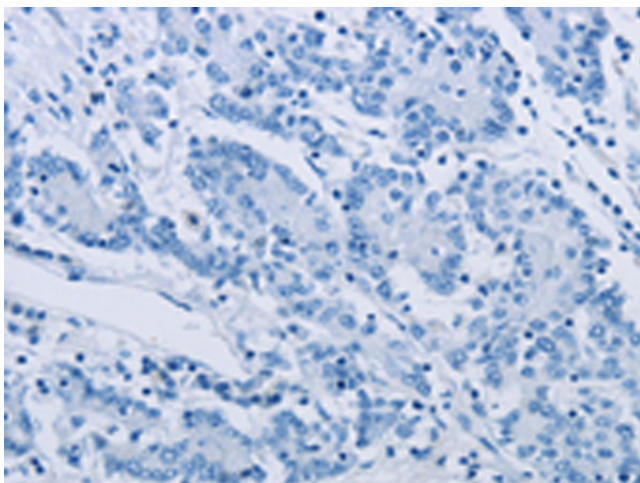
Immunohistochemistry of paraffin-embedded Human liver cancer tissue using [TA351288] (SYN1 Antibody) at dilution 1/50 (Original magnification: ×200)



Immunohistochemistry of paraffin-embedded Human liver cancer tissue using [TA351288] (SYN1 Antibody) at dilution 1/50, treated with synthetic peptide. (Original magnification: $\times 200$)



Immunohistochemistry of paraffin-embedded Human colon cancer tissue using [TA351288] (SYN1 Antibody) at dilution 1/50 (Original magnification: $\times 200$)



Immunohistochemistry of paraffin-embedded Human colon cancer tissue using [TA351288] (SYN1 Antibody) at dilution 1/50, treated with synthetic peptide. (Original magnification: $\times 200$)