

## Product datasheet for **TA351282**

### IL17D Rabbit Polyclonal Antibody

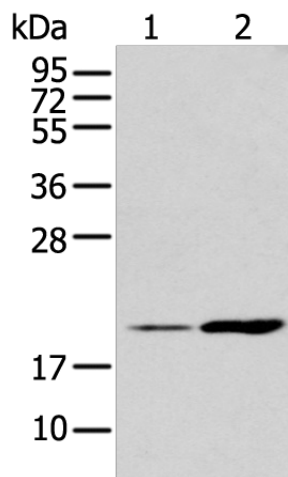
#### Product data:

Product Type:	Primary Antibodies
Applications:	IHC, WB
Recommended Dilution:	WB: 200-1000 WB positive control: Human placenta tissue and A431 cell IHC: 50-200 Positive control: Human tonsil Predicted cell location: cytoplasm
Reactivity:	Human
Host:	Rabbit
Isotype:	IgG
Clonality:	Polyclonal
Immunogen:	Synthetic peptide of human IL17D
Formulation:	pH7.4 PBS, 0.05% NaN <sub>3</sub> , 40% Glycerol
Concentration:	lot specific
Purification:	Antigen affinity purification
Conjugation:	Unconjugated
Storage:	Store at -20°C as received.
Stability:	Stable for 12 months from date of receipt.
Gene Name:	interleukin 17D
Database Link:	<a href="#">NP_612141</a> <a href="#">Entrez Gene 53342 Human</a> <a href="#">Q8TAD2</a>
Background:	The protein encoded by this gene is a cytokine that shares the sequence similarity with IL17. The treatment of endothelial cells with this cytokine has been shown to stimulate the production of other cytokines including IL6, IL8 and CSF2/ GM-CSF. The increased expression of IL8 induced by this cytokine was found to be NF-kappa B-dependent.
Synonyms:	IL-17D
Protein Families:	Druggable Genome, Secreted Protein



[View online »](#)

## Product images:



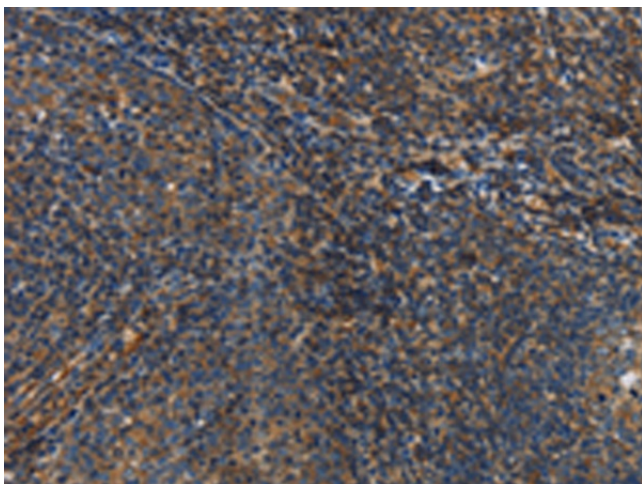
Gel: 12%SDS-PAGE

Lysate: 40  $\mu$ g

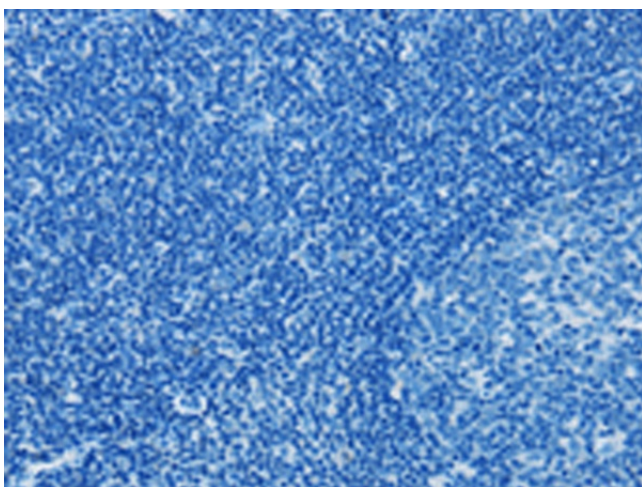
Lane 1-2: Human placenta tissue and A431 cell  
Primary antibody: TA351282 (IL17D Antibody) at  
dilution 1/200

Secondary antibody: Goat anti rabbit IgG at  
1/8000 dilution

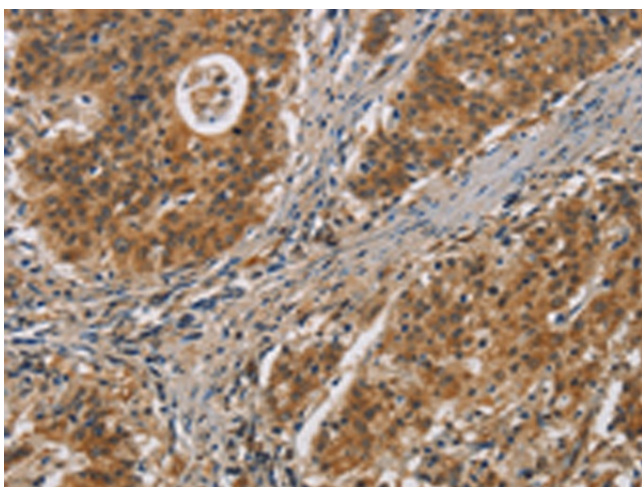
Exposure time: 1 minute



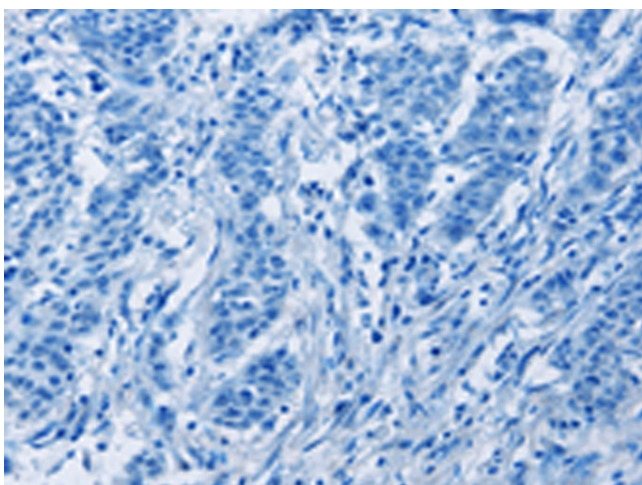
Immunohistochemistry of paraffin-embedded  
Human tonsil tissue using TA351282 (IL17D  
Antibody) at dilution 1/50 (Original magnification:  
 $\times$ 200)



Immunohistochemistry of paraffin-embedded Human tonsil tissue using TA351282 (IL17D Antibody) at dilution 1/50, treated with synthetic peptide. (Original magnification:  $\times 200$ )



Immunohistochemistry of paraffin-embedded Human gastric cancer tissue using TA351282 (IL17D Antibody) at dilution 1/50 (Original magnification:  $\times 200$ )



Immunohistochemistry of paraffin-embedded Human gastric cancer tissue using TA351282 (IL17D Antibody) at dilution 1/50, treated with synthetic peptide. (Original magnification:  $\times 200$ )