

## Product datasheet for **TA351279S**

### IGF2R Rabbit Polyclonal Antibody

#### Product data:

|                         |                                                                                                                                                |
|-------------------------|------------------------------------------------------------------------------------------------------------------------------------------------|
| Product Type:           | Primary Antibodies                                                                                                                             |
| Applications:           | IHC, WB                                                                                                                                        |
| Recommended Dilution:   | WB: 200-1000<br>WB positive control: Jurkat cells<br>IHC: 50-200<br>Positive control: Human liver cancer<br>Predicted cell location: Cytoplasm |
| Reactivity:             | Human, Mouse                                                                                                                                   |
| Host:                   | Rabbit                                                                                                                                         |
| Isotype:                | IgG                                                                                                                                            |
| Clonality:              | Polyclonal                                                                                                                                     |
| Immunogen:              | Synthetic peptide of human IGF2R                                                                                                               |
| Formulation:            | pH7.4 PBS, 0.05% NaN <sub>3</sub> , 40% Glycerol                                                                                               |
| Purification:           | Antigen affinity purification                                                                                                                  |
| Conjugation:            | Unconjugated                                                                                                                                   |
| Storage:                | Store at -20°C as received.                                                                                                                    |
| Stability:              | Stable for 12 months from date of receipt.                                                                                                     |
| Predicted Protein Size: | 274 kDa                                                                                                                                        |
| Gene Name:              | insulin like growth factor 2 receptor                                                                                                          |
| Database Link:          | <a href="#">NP_000867</a><br><a href="#">Entrez Gene 16004 Mouse</a> <a href="#">Entrez Gene 3482 Human</a><br><a href="#">P11717</a>          |



[View online »](#)

**Background:**

This gene encodes a receptor for both insulin-like growth factor 2 and mannose 6-phosphate, although the binding sites for either are located on different segments of the receptor. This receptor functions in the intracellular trafficking of lysosomal enzymes, the activation of transforming growth factor beta, and the degradation of insulin-like growth factor 2. While the related mouse gene shows exclusive expression from the maternal allele, imprinting of the human gene appears to be polymorphic, with only a minority of individuals showing expression from the maternal allele.

**Synonyms:**

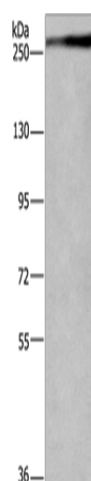
CD222; CIMPR; M6P-R; MPR1; MPRI

**Protein Families:**

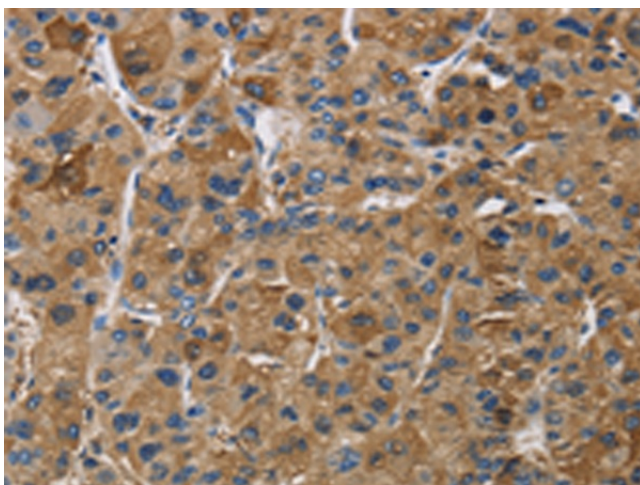
Druggable Genome, Transmembrane

**Protein Pathways:**

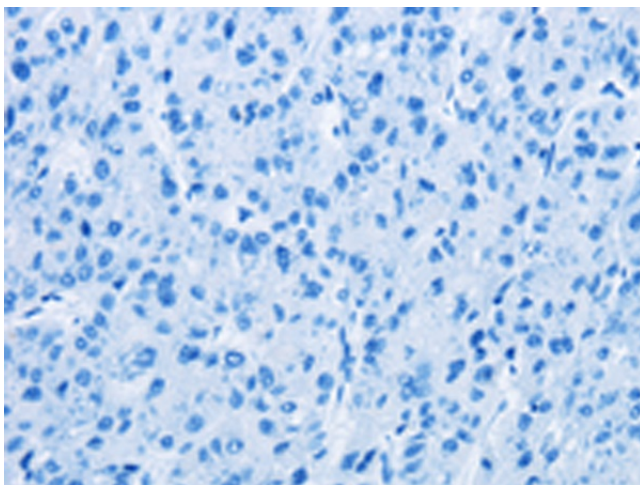
Lysosome

**Product images:**

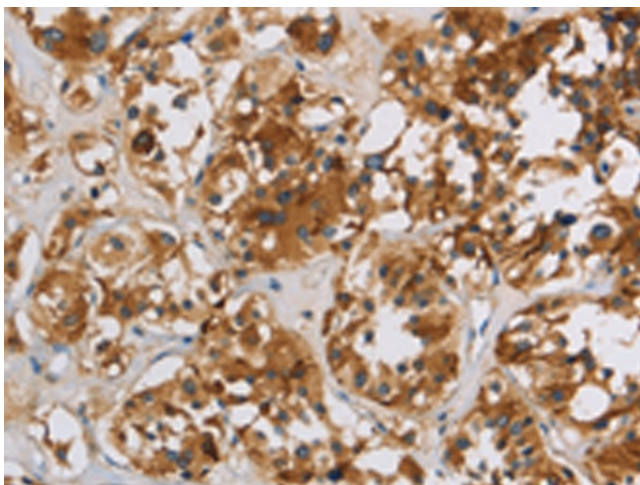
Gel: 6%SDS-PAGE  
Lysate: 40  $\mu$ g  
Lane: Jurkat cells  
Primary antibody: [TA351279] (IGF2R Antibody) at dilution 1/400  
Secondary antibody: Goat anti rabbit IgG at 1/8000 dilution  
Exposure time: 3 minutes



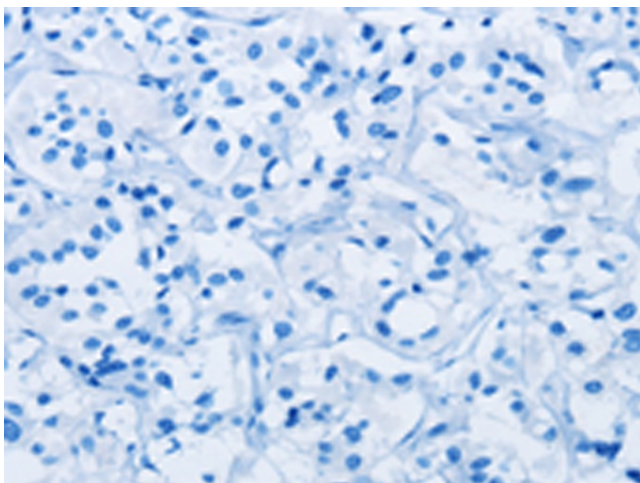
Immunohistochemistry of paraffin-embedded Human liver cancer tissue using [TA351279] (IGF2R Antibody) at dilution 1/50 (Original magnification:  $\times$ 200)



Immunohistochemistry of paraffin-embedded Human liver cancer tissue using [TA351279] (IGF2R Antibody) at dilution 1/50, treated with synthetic peptide. (Original magnification: ×200)



Immunohistochemistry of paraffin-embedded Human thyroid cancer tissue using [TA351279] (IGF2R Antibody) at dilution 1/50 (Original magnification: ×200)



Immunohistochemistry of paraffin-embedded Human thyroid cancer tissue using [TA351279] (IGF2R Antibody) at dilution 1/50, treated with synthetic peptide. (Original magnification: ×200)