

Product datasheet for **TA351279**

IGF2R Rabbit Polyclonal Antibody

Product data:

Product Type:	Primary Antibodies
Applications:	IHC, WB
Recommended Dilution:	WB: 200-1000 WB positive control: Jurkat cells IHC: 50-200 Positive control: Human liver cancer Predicted cell location: Cytoplasm
Reactivity:	Human, Mouse
Host:	Rabbit
Isotype:	IgG
Clonality:	Polyclonal
Immunogen:	Synthetic peptide of human IGF2R
Formulation:	pH7.4 PBS, 0.05% NaN ₃ , 40% Glycerol
Concentration:	lot specific
Purification:	Antigen affinity purification
Conjugation:	Unconjugated
Storage:	Store at -20°C as received.
Stability:	Stable for 12 months from date of receipt.
Predicted Protein Size:	274 kDa
Gene Name:	insulin like growth factor 2 receptor
Database Link:	NP_000867 Entrez Gene 16004 Mouse Entrez Gene 3482 Human P11717



[View online »](#)

Background:

This gene encodes a receptor for both insulin-like growth factor 2 and mannose 6-phosphate, although the binding sites for either are located on different segments of the receptor. This receptor functions in the intracellular trafficking of lysosomal enzymes, the activation of transforming growth factor beta, and the degradation of insulin-like growth factor 2. While the related mouse gene shows exclusive expression from the maternal allele, imprinting of the human gene appears to be polymorphic, with only a minority of individuals showing expression from the maternal allele.

Synonyms:

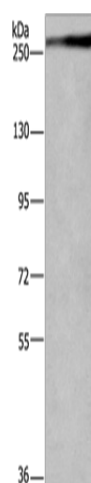
CD222; CIMPR; M6P-R; MPR1; MPRI

Protein Families:

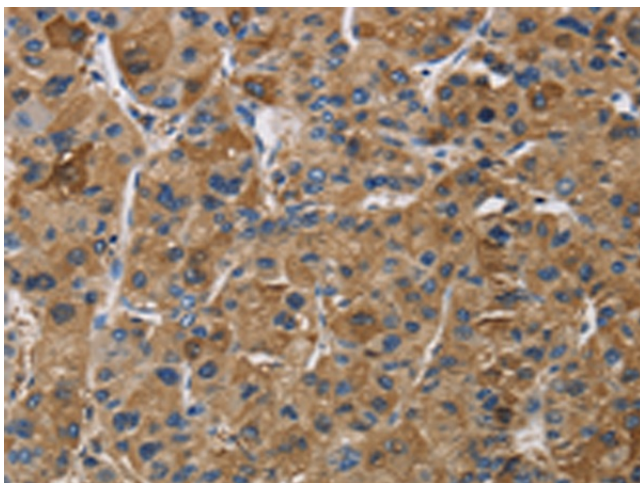
Druggable Genome, Transmembrane

Protein Pathways:

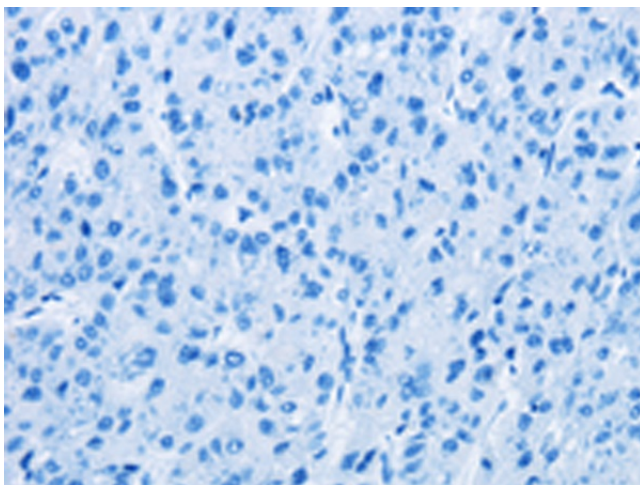
Lysosome

Product images:

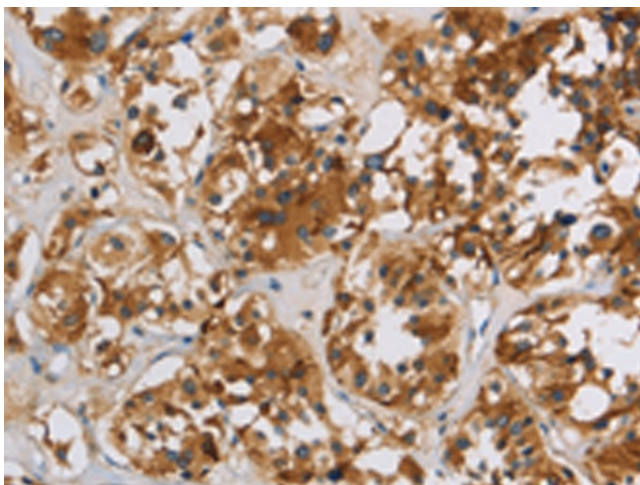
Gel: 6%SDS-PAGE
Lysate: 40 µg
Lane: Jurkat cells
Primary antibody: TA351279 (IGF2R Antibody) at dilution 1/400
Secondary antibody: Goat anti rabbit IgG at 1/8000 dilution
Exposure time: 3 minutes



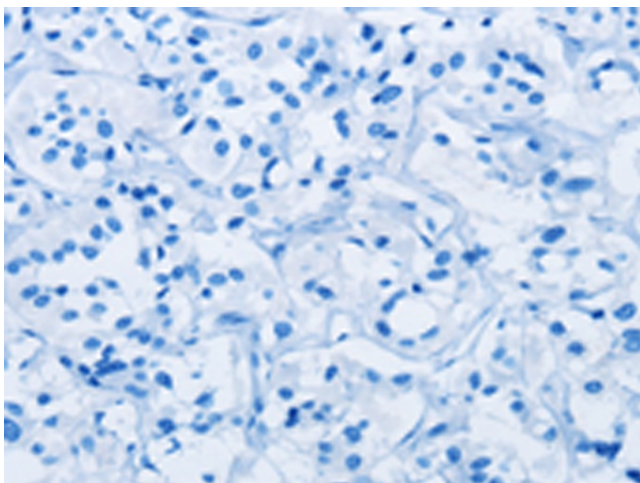
Immunohistochemistry of paraffin-embedded Human liver cancer tissue using TA351279 (IGF2R Antibody) at dilution 1/50 (Original magnification: ×200)



Immunohistochemistry of paraffin-embedded Human liver cancer tissue using TA351279 (IGF2R Antibody) at dilution 1/50, treated with synthetic peptide. (Original magnification: $\times 200$)



Immunohistochemistry of paraffin-embedded Human thyroid cancer tissue using TA351279 (IGF2R Antibody) at dilution 1/50 (Original magnification: $\times 200$)



Immunohistochemistry of paraffin-embedded Human thyroid cancer tissue using TA351279 (IGF2R Antibody) at dilution 1/50, treated with synthetic peptide. (Original magnification: $\times 200$)