

## Product datasheet for **TA351276**

### IFNA16 Rabbit Polyclonal Antibody

#### Product data:

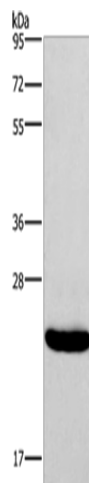
Product Type:	Primary Antibodies
Applications:	WB
Recommended Dilution:	WB: 500-2000 WB positive control: Riji cells
Reactivity:	Human
Host:	Rabbit
Isotype:	IgG
Clonality:	Polyclonal
Immunogen:	Synthetic peptide of human IFNA16
Formulation:	pH7.4 PBS, 0.05% NaN <sub>3</sub> , 40% Glycerol
Concentration:	lot specific
Purification:	Antigen affinity purification
Conjugation:	Unconjugated
Storage:	Store at -20°C as received.
Stability:	Stable for 12 months from date of receipt.
Predicted Protein Size:	22 kDa
Gene Name:	interferon, alpha 16
Database Link:	<a href="#">NP_002164</a> <a href="#">Entrez Gene 3449 Human P05015</a>
Background:	Interferon, alpha 16 is produced by macrophages and has antiviral activities. Interferon stimulates the production of two enzymes: a protein kinase and an oligoadenylate synthetase.
Synonyms:	IFN-alphaO
Protein Families:	Druggable Genome, Secreted Protein



[View online »](#)

**Protein Pathways:**

Antigen processing and presentation, Autoimmune thyroid disease, Cytokine-cytokine receptor interaction, Cytosolic DNA-sensing pathway, Jak-STAT signaling pathway, Natural killer cell mediated cytotoxicity, Regulation of autophagy, RIG-I-like receptor signaling pathway, Toll-like receptor signaling pathway

**Product images:**

Gel: 8%SDS-PAGE

Lysate: 40 µg

Lane: Riji cells

Primary antibody: TA351276 (IFNA16 Antibody) at dilution 1/400

Secondary antibody: Goat anti rabbit IgG at 1/8000 dilution

Exposure time: 10 seconds