

## Product datasheet for **TA351273S**

### ID2 Rabbit Polyclonal Antibody

#### Product data:

|                       |  |
|-----------------------|--|
| Product Type:         | Primary Antibodies   |
| Applications:         | IHC  |
| Recommended Dilution: | IHC: 50-200<br>Positive control: Human breast cancer<br>Predicted cell location: Cytoplasm or Nucleus  |
| Reactivity:           | Human, Mouse, Rat  |
| Host:                 | Rabbit   |
| Isotype:              | IgG  |
| Clonality:            | Polyclonal   |
| Immunogen:            | Synthetic peptide of human ID2   |
| Formulation:          | pH7.4 PBS, 0.05% NaN <sub>3</sub> , 40% Glycerol   |
| Purification:         | Antigen affinity purification  |
| Conjugation:          | Unconjugated   |
| Storage:              | Store at -20°C as received.  |
| Stability:            | Stable for 12 months from date of receipt.   |
| Gene Name:            | inhibitor of DNA binding 2, HLH protein  |
| Database Link:        | <a href="#">NP_002157</a><br><a href="#">Entrez Gene 15902 Mouse</a> <a href="#">Entrez Gene 25587 Rat</a> <a href="#">Entrez Gene 3398 Human</a><br><a href="#">Q02363</a>  |
| Background:           | The protein encoded by this gene belongs to the inhibitor of DNA binding family, members of which are transcriptional regulators that contain a helix-loop-helix (HLH) domain but not a basic domain. Members of the inhibitor of DNA binding family inhibit the functions of basic helix-loop-helix transcription factors in a dominant-negative manner by suppressing their heterodimerization partners through the HLH domains. This protein may play a role in negatively regulating cell differentiation. A pseudogene of this gene is located on chromosome 3. |
| Synonyms:             | bHLHb26; GIG8; ID2A; ID2H  |

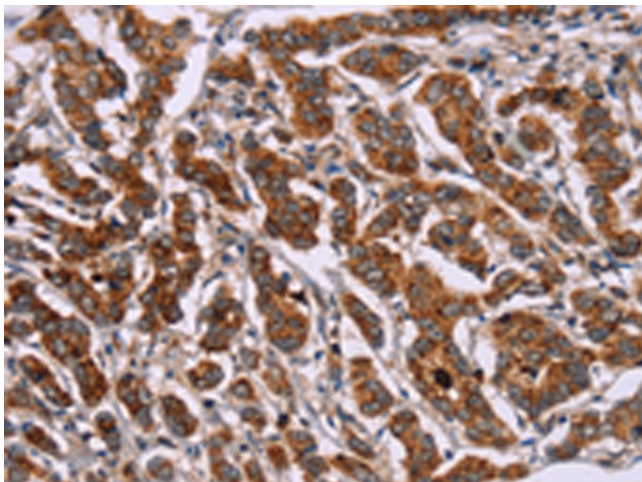


[View online »](#)

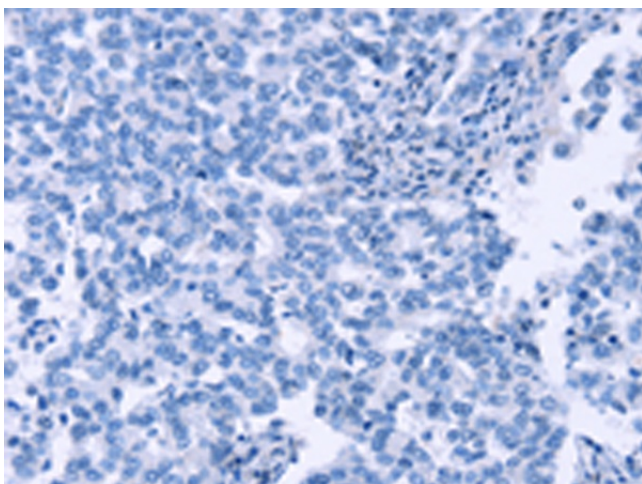
**Protein Families:** ES Cell Differentiation/IPS, Stem cell relevant signaling - TGFb/BMP signaling pathway, Transcription Factors

**Protein Pathways:** TGF-beta signaling pathway

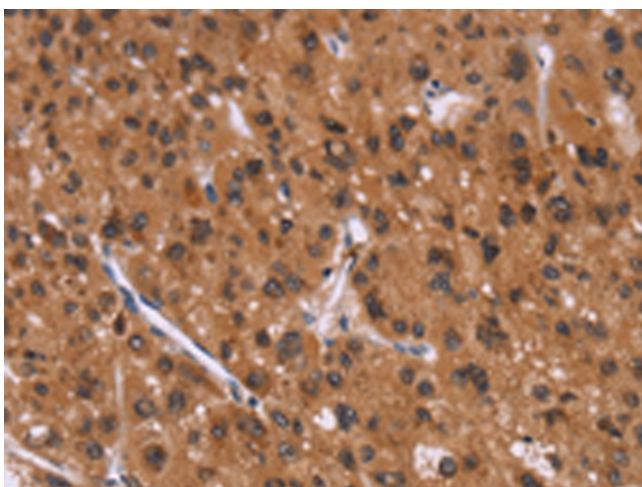
**Product images:**



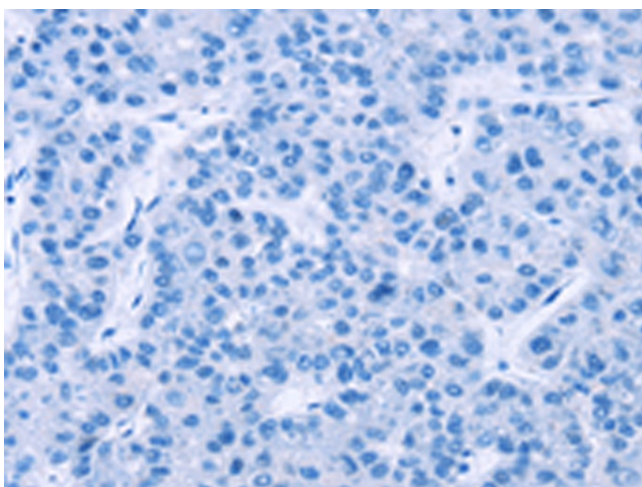
Immunohistochemistry of paraffin-embedded Human breast cancer tissue using [TA351273] (ID2 Antibody) at dilution 1/30 (Original magnification:  $\times 200$ )



Immunohistochemistry of paraffin-embedded Human breast cancer tissue using [TA351273] (ID2 Antibody) at dilution 1/30, treated with synthetic peptide. (Original magnification:  $\times 200$ )



Immunohistochemistry of paraffin-embedded Human liver cancer tissue using [TA351273] (ID2 Antibody) at dilution 1/30 (Original magnification: ×200)



Immunohistochemistry of paraffin-embedded Human liver cancer tissue using [TA351273] (ID2 Antibody) at dilution 1/30, treated with synthetic peptide. (Original magnification: ×200)