

## Product datasheet for **TA351271**

### ICAM3 Rabbit Polyclonal Antibody

#### Product data:

Product Type:	Primary Antibodies
Applications:	IHC, WB
Recommended Dilution:	ELISA: 1000-2000, WB: 500-2000, IHC: 25-100
Reactivity:	Human
Host:	Rabbit
Isotype:	IgG
Clonality:	Polyclonal
Immunogen:	Synthetic peptide of human ICAM3
Formulation:	pH7.4 PBS, 0.05% NaN <sub>3</sub> , 40% Glycerol
Concentration:	lot specific
Purification:	Antigen affinity purification
Conjugation:	Unconjugated
Storage:	Store at -20°C as received.
Stability:	Stable for 12 months from date of receipt.
Predicted Protein Size:	60 kDa
Gene Name:	intercellular adhesion molecule 3
Database Link:	<a href="#">NP_002153</a> <a href="#">Entrez Gene 3385 Human P32942</a>

**Background:** The protein encoded by this gene is a member of the intercellular adhesion molecule (ICAM) family. All ICAM proteins are type I transmembrane glycoproteins, contain 2-9 immunoglobulin-like C2-type domains, and bind to the leukocyte adhesion LFA-1 protein. This protein is constitutively and abundantly expressed by all leucocytes and may be the most important ligand for LFA-1 in the initiation of the immune response. It functions not only as an adhesion molecule, but also as a potent signalling molecule.

**Synonyms:** CD50; CDW50; ICAM-R

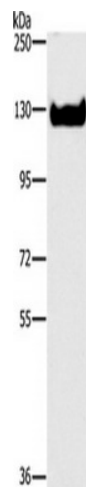
**Protein Families:** ES Cell Differentiation/IPS, Transmembrane



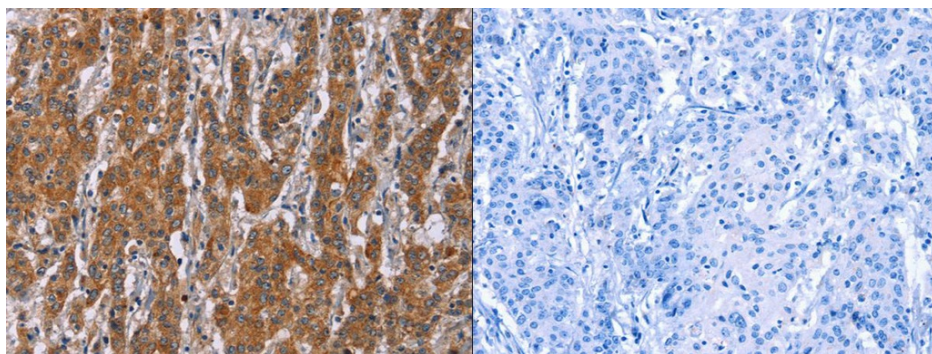
[View online »](#)

Protein Pathways: Cell adhesion molecules (CAMs)

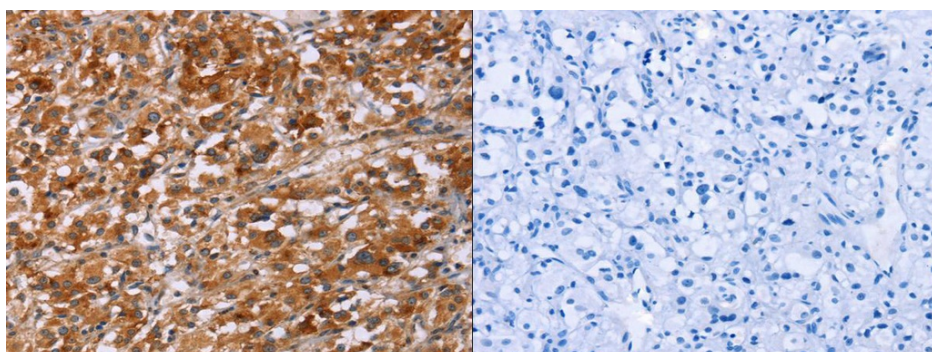
### Product images:



Gel: 6%SDS-PAGE, Lysate: 40 ug, Lane: Jurkat cells, Primary antibody: (ICAM3 Antibody) at dilution 1/348, Secondary antibody: Goat anti rabbit IgG at 1/8000 dilution, Exposure time: 1 minute



The image on the left is immunohistochemistry of paraffin-embedded Human gastric cancer tissue using (ICAM3 Antibody) at dilution 1/20, on the right is treated with synthetic peptide. (Original magnification:  $\times 200$ )



The image on the left is immunohistochemistry of paraffin-embedded Human thyroid cancer tissue using (ICAM3 Antibody) at dilution 1/20, on the right is treated with synthetic peptide. (Original magnification:  $\times 200$ )