

Product datasheet for **TA351265**

HRH3 Rabbit Polyclonal Antibody

Product data:

Product Type:	Primary Antibodies
Applications:	IHC, WB
Recommended Dilution:	WB: 1000-5000 WB positive control: Mouse brain tissue IHC: 50-200 Positive control: Human thyroid cancer Predicted cell location: Cytoplasm
Reactivity:	Human, Mouse
Host:	Rabbit
Isotype:	IgG
Clonality:	Polyclonal
Immunogen:	Synthetic peptide of human HRH3
Formulation:	pH7.4 PBS, 0.05% NaN ₃ , 40% Glycerol
Concentration:	lot specific
Purification:	Antigen affinity purification
Conjugation:	Unconjugated
Storage:	Store at -20°C as received.
Stability:	Stable for 12 months from date of receipt.
Predicted Protein Size:	49 kDa
Gene Name:	histamine receptor H3
Database Link:	NP_009163 Entrez Gene 99296 Mouse Entrez Gene 11255 Human Q9Y5N1



[View online »](#)

Background:

Histamine is a ubiquitous messenger molecule released from mast cells, enterochromaffin-like cells, and neurons. Its various actions are mediated by histamine receptors H1, H2, H3 and H4. This gene encodes one of the histamine receptors (H3) which belongs to the family 1 of G protein-coupled receptors. It is an integral membrane protein and can regulate neurotransmitter release. This receptor can also increase voltage-dependent calcium current in smooth muscles and innervates the blood vessels and the heart in cardiovascular system.

Synonyms:

GPCR97; HH3R

Protein Families:

Druggable Genome, Transmembrane

Protein Pathways:

Neuroactive ligand-receptor interaction

Product images:

Gel: 8%SDS-PAGE

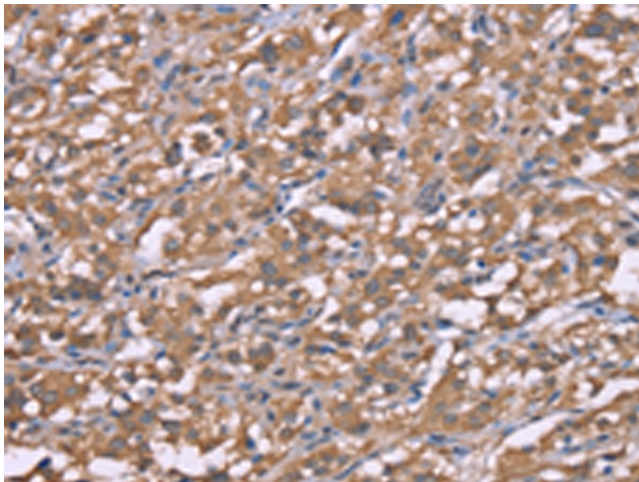
Lysate: 40 µg

Lane: Mouse brain tissue

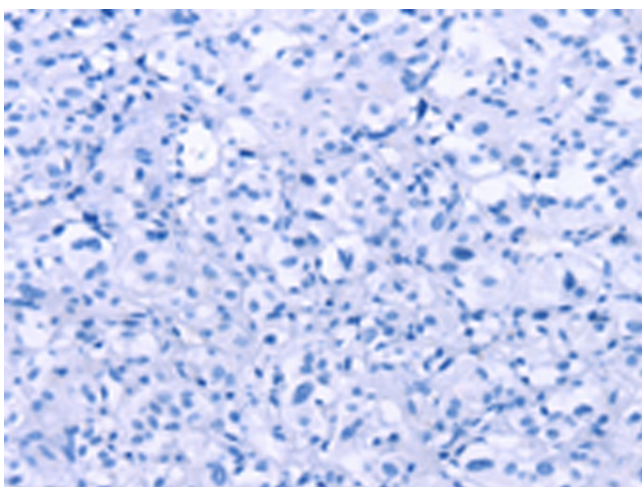
Primary antibody: TA351265 (HRH3 Antibody) at dilution 1/750

Secondary antibody: Goat anti rabbit IgG at 1/8000 dilution

Exposure time: 1 minute



Immunohistochemistry of paraffin-embedded Human thyroid cancer tissue using TA351265 (HRH3 Antibody) at dilution 1/50 (Original magnification: ×200)



Immunohistochemistry of paraffin-embedded Human thyroid cancer tissue using TA351265 (HRH3 Antibody) at dilution 1/50, treated with synthetic peptide. (Original magnification: $\times 200$)