

## Product datasheet for **TA351263S**

### HRH1 Rabbit Polyclonal Antibody

#### Product data:

Product Type:	Primary Antibodies
Applications:	IHC, WB
Recommended Dilution:	WB: 500-2000 WB positive control: Human normal colon tissue IHC: 50-200 Positive control: Human thyroid cancer Predicted cell location: Cytoplasm
Reactivity:	Human
Host:	Rabbit
Isotype:	IgG
Clonality:	Polyclonal
Immunogen:	Synthetic peptide of human HRH1
Formulation:	pH7.4 PBS, 0.05% NaN <sub>3</sub> , 40% Glycerol
Purification:	Antigen affinity purification
Conjugation:	Unconjugated
Storage:	Store at -20°C as received.
Stability:	Stable for 12 months from date of receipt.
Predicted Protein Size:	56 kDa
Gene Name:	histamine receptor H1
Database Link:	<a href="#">NP_001091681</a> <a href="#">Entrez Gene 3269 Human P35367</a>



[View online »](#)

**Background:**

Histamine is a ubiquitous messenger molecule released from mast cells, enterochromaffin-like cells, and neurons. Its various actions are mediated by histamine receptors H1, H2, H3 and H4. This gene was thought to be intronless until recently. The protein encoded by this gene is an integral membrane protein and belongs to the G protein-coupled receptor superfamily. It mediates the contraction of smooth muscles, the increase in capillary permeability due to contraction of terminal venules, the release of catecholamine from adrenal medulla, and neurotransmission in the central nervous system.

**Synonyms:**

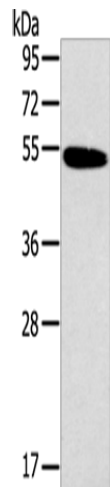
H1-R; H1R; HH1R; hisH1

**Protein Families:**

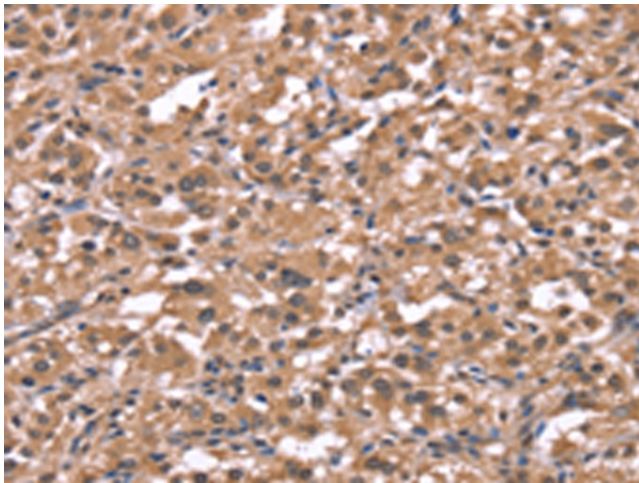
Druggable Genome, GPCR, Transmembrane

**Protein Pathways:**

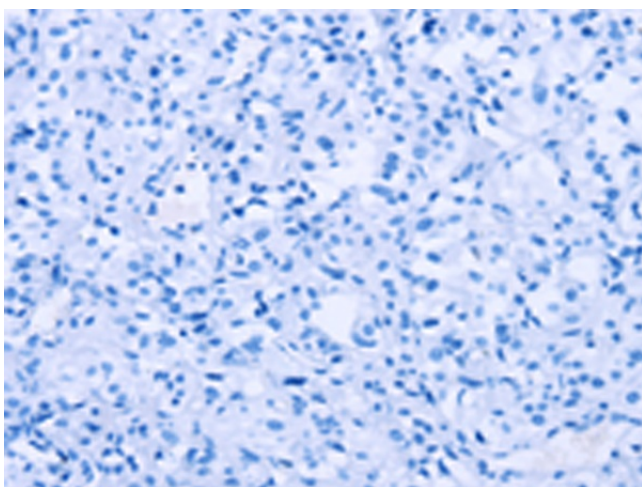
Calcium signaling pathway, Neuroactive ligand-receptor interaction

**Product images:**

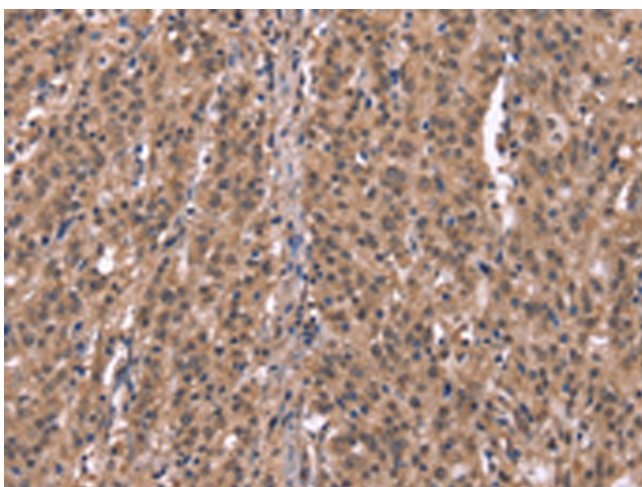
Gel: 8%SDS-PAGE  
Lysate: 40  $\mu$ g  
Lane: Human normal colon tissue  
Primary antibody: [TA351263] (HRH1 Antibody) at dilution 1/200  
Secondary antibody: Goat anti rabbit IgG at 1/8000 dilution  
Exposure time: 2 minutes



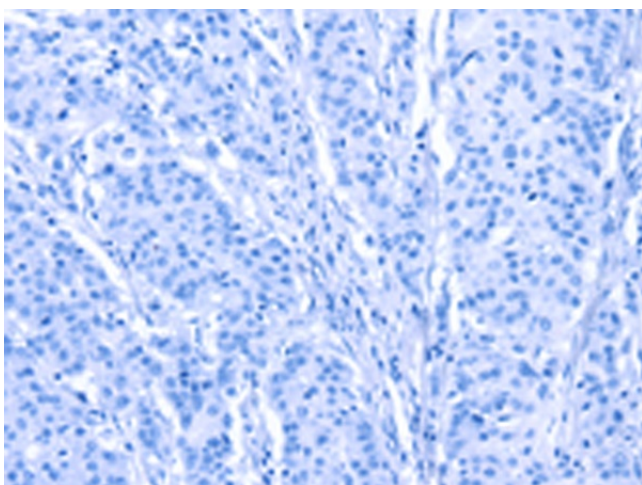
Immunohistochemistry of paraffin-embedded Human thyroid cancer tissue using [TA351263] (HRH1 Antibody) at dilution 1/40 (Original magnification:  $\times$ 200)



Immunohistochemistry of paraffin-embedded Human thyroid cancer tissue using [TA351263] (HRH1 Antibody) at dilution 1/40, treated with synthetic peptide. (Original magnification: ×200)



Immunohistochemistry of paraffin-embedded Human gastric cancer tissue using [TA351263] (HRH1 Antibody) at dilution 1/40 (Original magnification: ×200)



Immunohistochemistry of paraffin-embedded Human gastric cancer tissue using [TA351263] (HRH1 Antibody) at dilution 1/40, treated with synthetic peptide. (Original magnification: ×200)