

## Product datasheet for **TA351262**

### NRG1 Rabbit Polyclonal Antibody

#### Product data:

Product Type:	Primary Antibodies
Applications:	WB
Recommended Dilution:	WB: 200-1000 WB positive control: Hela and A549 cells
Reactivity:	Human
Host:	Rabbit
Isotype:	IgG
Clonality:	Polyclonal
Immunogen:	Synthetic peptide of human NRG1
Formulation:	pH7.4 PBS, 0.05% NaN <sub>3</sub> , 40% Glycerol
Concentration:	lot specific
Purification:	Antigen affinity purification
Conjugation:	Unconjugated
Storage:	Store at -20°C as received.
Stability:	Stable for 12 months from date of receipt.
Predicted Protein Size:	70 kDa
Gene Name:	neuregulin 1
Database Link:	<a href="#">NP_039250</a> <a href="#">Entrez Gene 3084 Human</a> <a href="#">Q02297</a>



[View online »](#)

**Background:**

The protein encoded by this gene was originally identified as a 44-kD glycoprotein that interacts with the NEU/ERBB2 receptor tyrosine kinase to increase its phosphorylation on tyrosine residues. This protein is a signaling protein that mediates cell-cell interactions and plays critical roles in the growth and development of multiple organ systems. It is known that an extraordinary variety of different isoforms are produced from this gene through alternative promoter usage and splicing. These isoforms are tissue-specifically expressed and differ significantly in their structure, and thereby these isoforms are classified into types I, II, III, IV, V and VI. The gene dysregulation has been linked to diseases such as cancer, schizophrenia and bipolar disorder (BPD).

**Synonyms:**

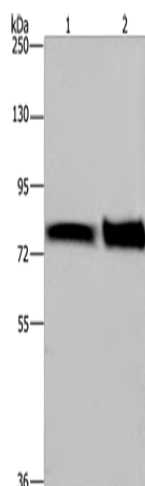
ARIA; GGF; GGF2; HGL; HRG; HRG1; HRGA; MST131; MSTP131; NDF; NRG1-IT2; SMDF

**Protein Families:**

Druggable Genome, Secreted Protein, Transcription Factors, Transmembrane

**Protein Pathways:**

ErbB signaling pathway

**Product images:**

Gel: 6%SDS-PAGE  
Lysate: 40 µg  
Lane 1-2: HeLa cells  
A549 cells  
Primary antibody: TA351262 (NRG1 Antibody) at dilution 1/200  
Secondary antibody: Goat anti rabbit IgG at 1/8000 dilution  
Exposure time: 10 minutes