

## Product datasheet for TA351256S

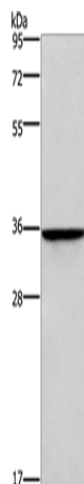
### HOXB2 Rabbit Polyclonal Antibody

#### Product data:

Product Type:	Primary Antibodies
Applications:	WB
Recommended Dilution:	WB: 200-1000 WB positive control: Human bladder cancer tissue
Reactivity:	Human
Host:	Rabbit
Isotype:	IgG
Clonality:	Polyclonal
Immunogen:	Synthetic peptide of human HOXB2
Formulation:	pH7.4 PBS, 0.05% NaN <sub>3</sub> , 40% Glycerol
Purification:	Antigen affinity purification
Conjugation:	Unconjugated
Storage:	Store at -20°C as received.
Stability:	Stable for 12 months from date of receipt.
Predicted Protein Size:	38 kDa
Gene Name:	homeobox B2
Database Link:	<a href="#">NP_002136</a> <a href="#">Entrez Gene 3212 Human</a> <a href="#">P14652</a>
Background:	This gene is a member of the Antp homeobox family and encodes a nuclear protein with a homeobox DNA-binding domain. It is included in a cluster of homeobox B genes located on chromosome 17. The encoded protein functions as a sequence-specific transcription factor that is involved in development. Increased expression of this gene is associated with pancreatic cancer.
Synonyms:	Hox-2.8; HOX2; HOX2H; K8


[View online »](#)

## Product images:



Gel: 8%SDS-PAGE  
 Lysate: 40 µg  
 Lane: Human bladder cancer tissue  
 Primary antibody: [TA351256] (HOXB2 Antibody)  
 at dilution 1/300  
 Secondary antibody: Goat anti rabbit IgG at  
 1/8000 dilution  
 Exposure time: 5 minutes