

Product datasheet for **TA351252**

hnRNP L (HNRNPL) Rabbit Polyclonal Antibody

Product data:

Product Type:	Primary Antibodies
Applications:	IHC, WB
Recommended Dilution:	WB: 500-2000 WB positive control: MCF-7, 293T, A549, Hela and HepG2 cells IHC: 50-200 Positive control: Human thyroid cancer Predicted cell location: Nucleus
Reactivity:	Human, Mouse
Host:	Rabbit
Isotype:	IgG
Clonality:	Polyclonal
Immunogen:	Synthetic peptide of human HNRNPL
Formulation:	pH7.4 PBS, 0.05% NaN ₃ , 40% Glycerol
Concentration:	lot specific
Purification:	Antigen affinity purification
Conjugation:	Unconjugated
Storage:	Store at -20°C as received.
Stability:	Stable for 12 months from date of receipt.
Predicted Protein Size:	64 kDa
Gene Name:	heterogeneous nuclear ribonucleoprotein L
Database Link:	NP_001524 Entrez Gene 15388 Mouse Entrez Gene 3191 Human P14866



[View online »](#)

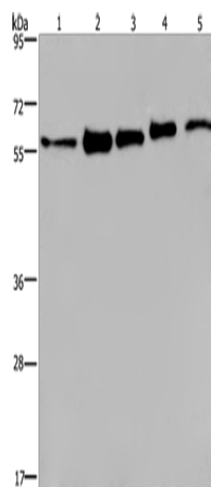
Background:

Heterogeneous nuclear RNAs (hnRNAs) which include mRNA precursors and mature mRNAs are associated with specific proteins to form heterogeneous ribonucleoprotein (hnRNP) complexes. Heterogeneous nuclear ribonucleoprotein L is among the proteins that are stably associated with hnRNP complexes and along with other hnRNP proteins is likely to play a major role in the formation, packaging, processing, and function of mRNA. Heterogeneous nuclear ribonucleoprotein L is present in the nucleoplasm as part of the HNRNP complex. HNRNP proteins have also been identified outside of the nucleoplasm. Exchange of hnRNP for mRNA-binding proteins accompanies transport of mRNA from the nucleus to the cytoplasm.

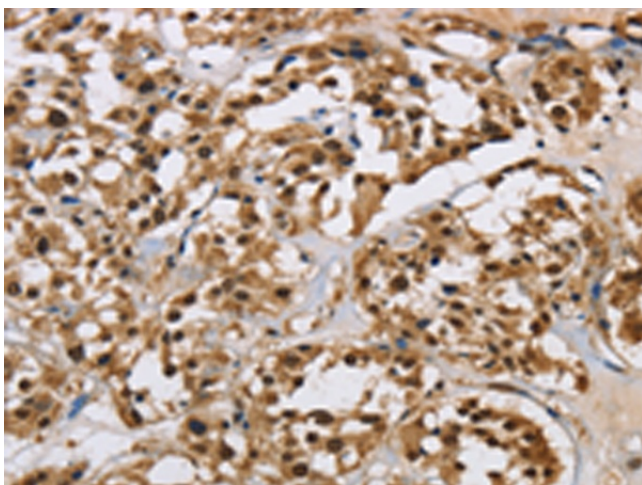
Synonyms:

hnRNP-L; HNRPL; OKcl.14; P

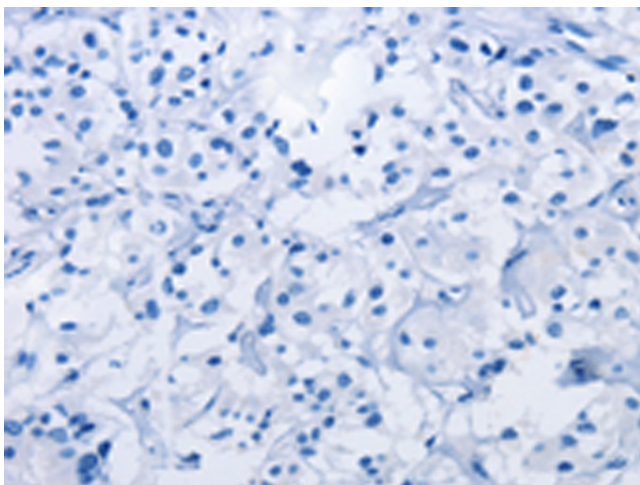
Product images:



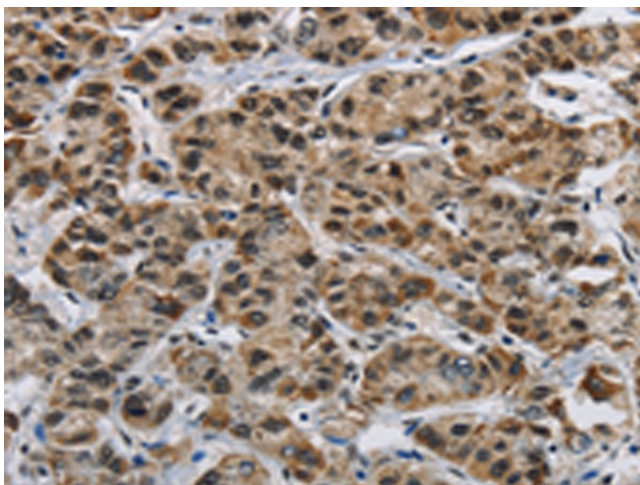
Gel: 6%SDS-PAGE
 Lysate: 40 µg
 Lane 1-5: MCF7 cells
 293T cells
 A549 cells
 HeLa cells
 HepG2 cells
 Primary antibody: TA351252 (HNRNPL Antibody)
 at dilution 1/450
 Secondary antibody: Goat anti rabbit IgG at
 1/8000 dilution
 Exposure time: 40 seconds



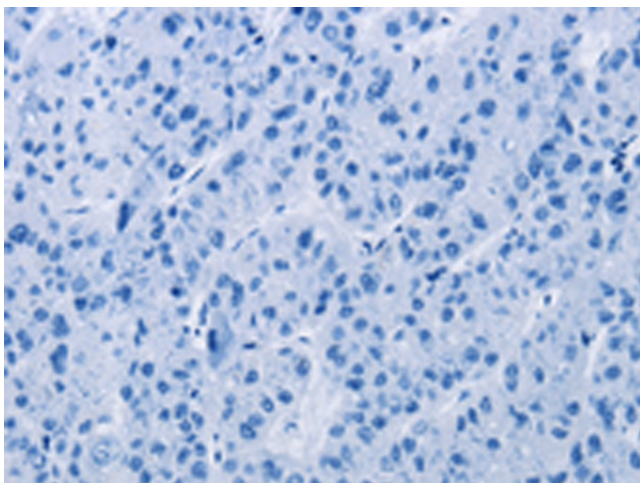
Immunohistochemistry of paraffin-embedded Human thyroid cancer tissue using TA351252 (HNRNPL Antibody) at dilution 1/40 (Original magnification: ×200)



Immunohistochemistry of paraffin-embedded Human thyroid cancer tissue using TA351252 (HNRNPL Antibody) at dilution 1/40, treated with synthetic peptide. (Original magnification: ×200)



Immunohistochemistry of paraffin-embedded Human liver cancer tissue using TA351252 (HNRNPL Antibody) at dilution 1/40 (Original magnification: ×200)



Immunohistochemistry of paraffin-embedded Human liver cancer tissue using TA351252 (HNRNPL Antibody) at dilution 1/40, treated with synthetic peptide. (Original magnification: ×200)