

Product datasheet for **TA351251**

HMGC2 Rabbit Polyclonal Antibody

Product data:

Product Type:	Primary Antibodies
Applications:	IHC, WB
Recommended Dilution:	WB: 200-1000 WB positive control: Human fetal liver tissue IHC: 50-200 Positive control: Human gastric cancer Predicted cell location: Cytoplasm
Reactivity:	Human
Host:	Rabbit
Isotype:	IgG
Clonality:	Polyclonal
Immunogen:	Synthetic peptide of human HMGC2
Formulation:	pH7.4 PBS, 0.05% NaN ₃ , 40% Glycerol
Concentration:	lot specific
Purification:	Antigen affinity purification
Conjugation:	Unconjugated
Storage:	Store at -20°C as received.
Stability:	Stable for 12 months from date of receipt.
Predicted Protein Size:	57 kDa
Gene Name:	3-hydroxy-3-methylglutaryl-CoA synthase 2
Database Link:	NP_005509 Entrez Gene 3158 Human P54868

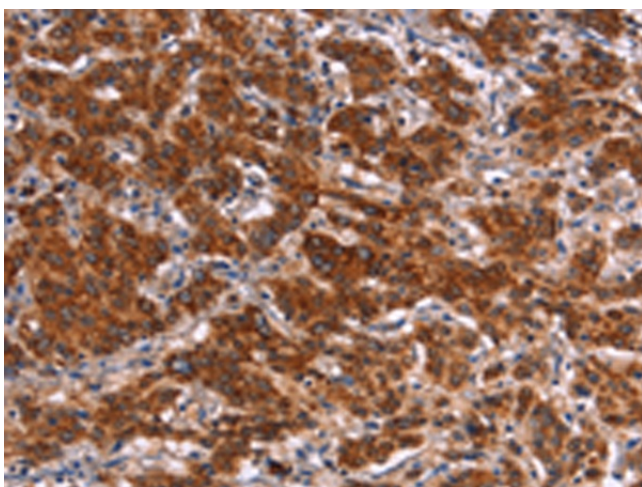


[View online »](#)

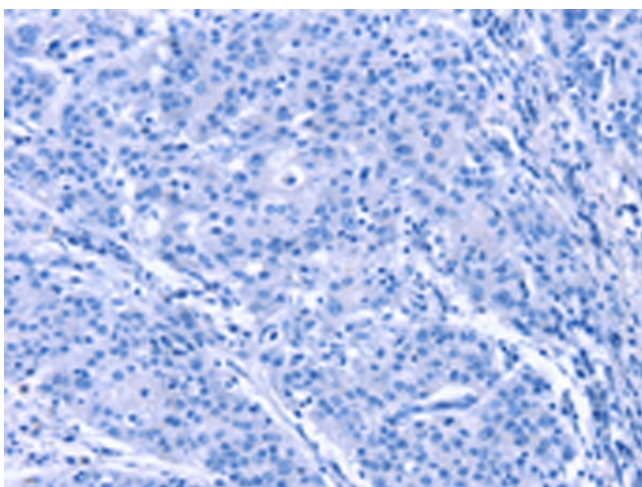
- Background:** The protein encoded by this gene belongs to the HMG-CoA synthase family. It is a mitochondrial enzyme that catalyzes the first reaction of ketogenesis, a metabolic pathway that provides lipid-derived energy for various organs during times of carbohydrate deprivation, such as fasting. Mutations in this gene are associated with HMG-CoA synthase deficiency. Alternatively spliced transcript variants encoding different isoforms have been found for this gene.
- Synonyms:** 3-hydroxy-3-methylglutaryl-Coenzyme A synthase 2 (mitochondrial); hydroxymethylglutaryl-CoA synthase 2; OTTHUMP00000013928
- Protein Families:** Druggable Genome
- Protein Pathways:** Butanoate metabolism, Metabolic pathways, PPAR signaling pathway, Synthesis and degradation of ketone bodies, Terpenoid backbone biosynthesis, Valine, leucine and isoleucine degradation

Product images:

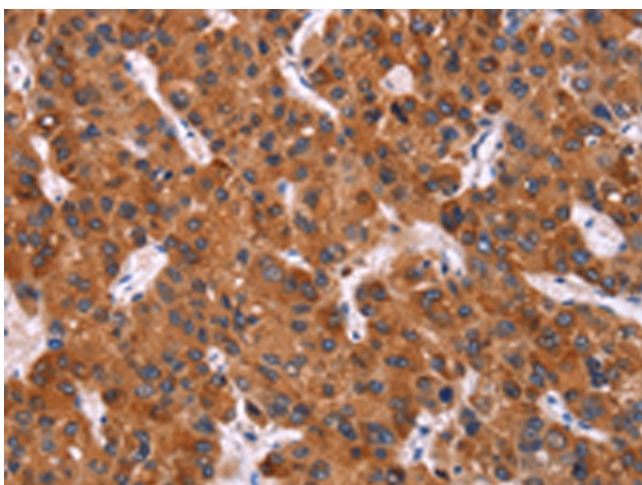
Gel: 8%SDS-PAGE
Lysate: 40 µg
Lane: Human fetal liver tissue
Primary antibody: TA351251 (HMGCS2 Antibody) at dilution 1/300
Secondary antibody: Goat anti rabbit IgG at 1/8000 dilution
Exposure time: 30 seconds



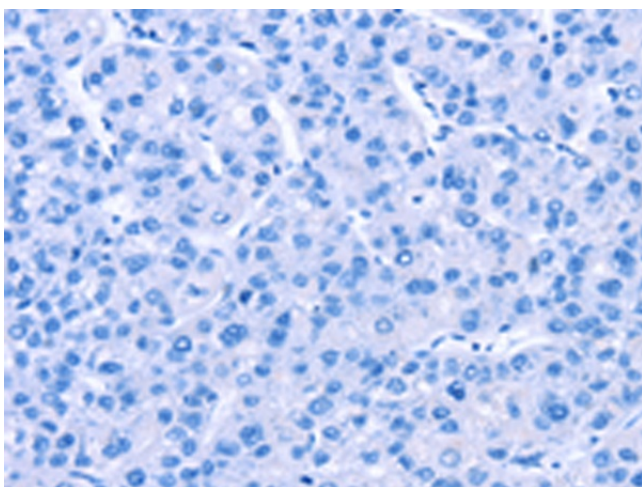
Immunohistochemistry of paraffin-embedded Human gastric cancer tissue using TA351251 (HMGC2 Antibody) at dilution 1/40 (Original magnification: $\times 200$)



Immunohistochemistry of paraffin-embedded Human gastric cancer tissue using TA351251 (HMGC2 Antibody) at dilution 1/40, treated with synthetic peptide. (Original magnification: $\times 200$)



Immunohistochemistry of paraffin-embedded Human liver cancer tissue using TA351251 (HMGC2 Antibody) at dilution 1/40 (Original magnification: $\times 200$)



Immunohistochemistry of paraffin-embedded Human liver cancer tissue using TA351251 (HMGC52 Antibody) at dilution 1/40, treated with synthetic peptide. (Original magnification: ×200)