

Product datasheet for **TA351246**

HINT1 Rabbit Polyclonal Antibody

Product data:

Product Type:	Primary Antibodies
Applications:	IHC, WB
Recommended Dilution:	WB: 500-2000 WB positive control: LoVo cells IHC: 100-300 Positive control: Human gastric cancer Predicted cell location: Cytoplasm or Nucleus
Reactivity:	Human, Mouse, Rat
Host:	Rabbit
Isotype:	IgG
Clonality:	Polyclonal
Immunogen:	Synthetic peptide of human HINT1
Formulation:	pH7.4 PBS, 0.05% NaN ₃ , 40% Glycerol
Concentration:	lot specific
Purification:	Antigen affinity purification
Conjugation:	Unconjugated
Storage:	Store at -20°C as received.
Stability:	Stable for 12 months from date of receipt.
Predicted Protein Size:	14 kDa
Gene Name:	histidine triad nucleotide binding protein 1
Database Link:	NP_005331 Entrez Gene 15254 Mouse Entrez Gene 690660 Rat Entrez Gene 3094 Human P49773



[View online »](#)

Background:

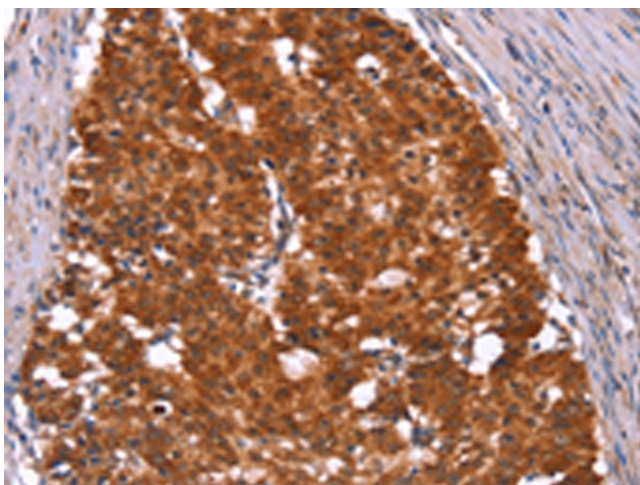
The protein encoded by this gene can hydrolyze substrates such as AMP-morpholidate, AMP-N-alanine methyl ester, AMP-alpha-acetyl lysine methyl ester, and AMP-NH₂. The encoded protein interacts with these substrates via a histidine triad motif, which is part of the loop that binds to the substrate. This gene has been found to be a tumor suppressing gene. Several transcript variants, but only one of them protein-coding, have been found for this gene.

Synonyms:

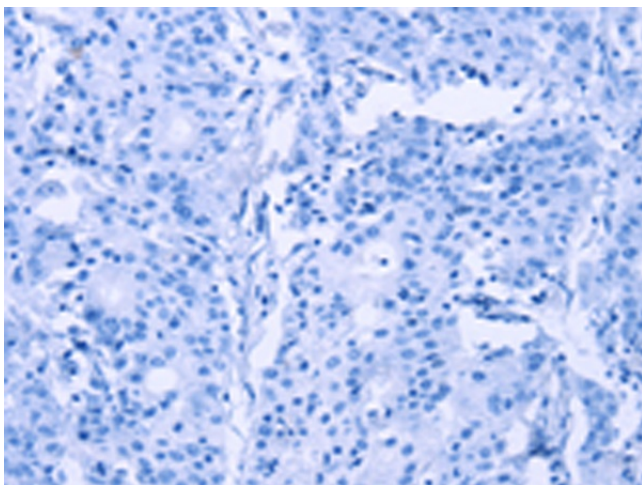
HINT; NMAN; PKCI-1; PRKCNH1

Product images:

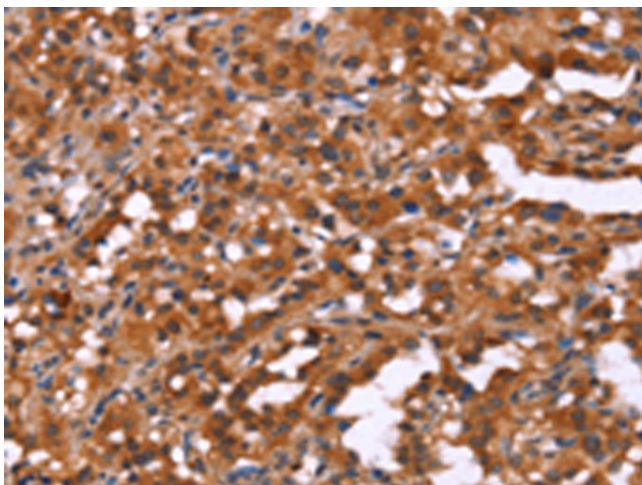
Gel: 10%SDS-PAGE
Lysate: 40 µg
Lane: LoVo cells
Primary antibody: TA351246 (HINT1 Antibody) at dilution 1/400
Secondary antibody: Goat anti rabbit IgG at 1/8000 dilution
Exposure time: 15 seconds



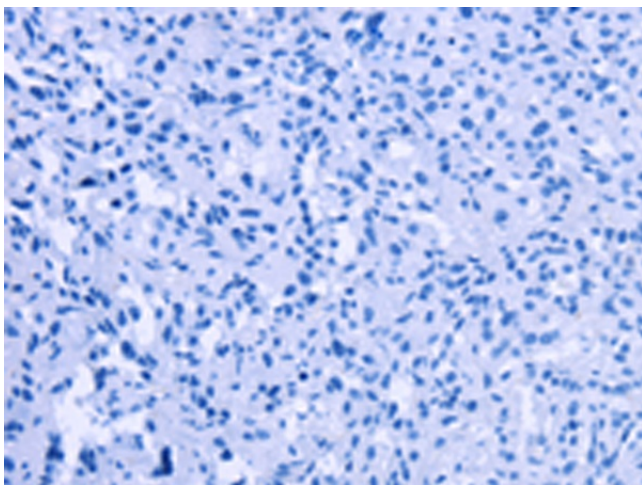
Immunohistochemistry of paraffin-embedded Human gastric cancer tissue using TA351246 (HINT1 Antibody) at dilution 1/50 (Original magnification: ×200)



Immunohistochemistry of paraffin-embedded Human gastric cancer tissue using TA351246 (HINT1 Antibody) at dilution 1/50, treated with synthetic peptide. (Original magnification: ×200)



Immunohistochemistry of paraffin-embedded Human thyroid cancer tissue using TA351246 (HINT1 Antibody) at dilution 1/50 (Original magnification: ×200)



Immunohistochemistry of paraffin-embedded Human thyroid cancer tissue using TA351246 (HINT1 Antibody) at dilution 1/50, treated with synthetic peptide. (Original magnification: ×200)