

Product datasheet for **TA351241S**

ZNF395 Rabbit Polyclonal Antibody

Product data:

Product Type:	Primary Antibodies
Applications:	IHC
Recommended Dilution:	IHC: 50-200 Positive control: Human ovarian cancer Predicted cell location: Cytoplasm
Reactivity:	Human
Host:	Rabbit
Isotype:	IgG
Clonality:	Polyclonal
Immunogen:	Synthetic peptide of human ZNF395
Formulation:	pH7.4 PBS, 0.05% NaN ₃ , 40% Glycerol
Purification:	Antigen affinity purification
Conjugation:	Unconjugated
Storage:	Store at -20°C as received.
Stability:	Stable for 12 months from date of receipt.
Gene Name:	zinc finger protein 395
Database Link:	NP_061130 Entrez Gene 55893 Human Q9H8N7

Background: Zinc-finger proteins contain DNA-binding domains and have a wide variety of functions, most of which encompass some form of transcriptional activation or repression. As a member of the krueppel C2H2-type zinc-finger protein family, ZNF395 (Zinc finger protein 395), also known as PBF (Papillomavirus-binding factor) and HDBP2 (Huntington disease gene regulatory region-binding protein 2), is a 513 amino acid protein that contains one C2H2-type zinc finger. ZNF395 binds to the 3'-CCGG-5' sequence within the papillomavirus promoter adjacent to a RUNX1-binding motif. It has also been established that ZNF395 binds to a seven base pair region within the Huntington's disease (HD) gene promoter, an essential element for HD gene expression. ZNF395 is widely expressed and probably shuttles between the nucleus and cytoplasm.

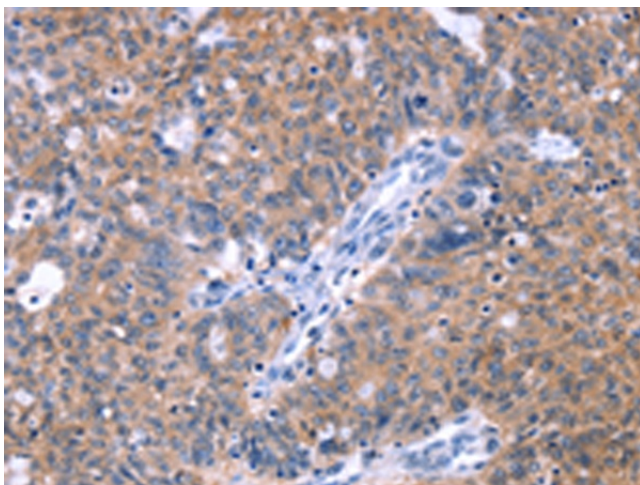


[View online »](#)

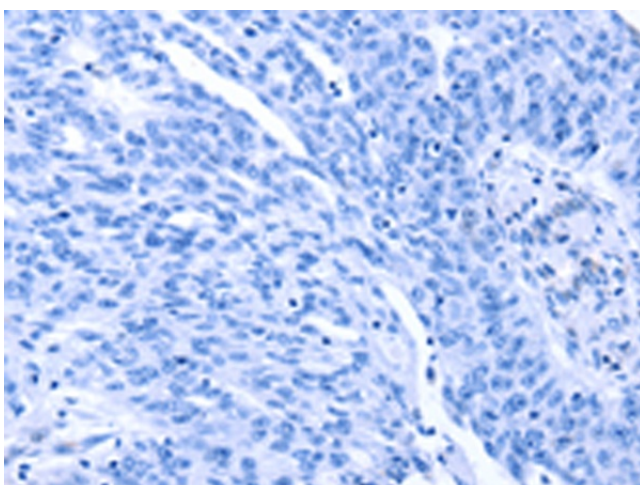
Synonyms: HDBP-2; HDBP2; HDRF-2; PBF; PRF-1; PRF1; Si-1-8-14

Protein Families: Transcription Factors

Product images:



Immunohistochemistry of paraffin-embedded Human ovarian cancer tissue using [TA351241] (ZNF395 Antibody) at dilution 1/40 (Original magnification: $\times 200$)



Immunohistochemistry of paraffin-embedded Human ovarian cancer tissue using [TA351241] (ZNF395 Antibody) at dilution 1/40, treated with synthetic peptide. (Original magnification: $\times 200$)