

## Product datasheet for **TA351238**

### Guanylate kinase (GUK1) Rabbit Polyclonal Antibody

#### Product data:

Product Type:	Primary Antibodies
Applications:	IHC, WB
Recommended Dilution:	WB: 200-1000 WB positive control: 231 cells IHC: 100-200 Positive control: Human thyroid cancer Predicted cell location: Cytoplasm
Reactivity:	Human, Mouse
Host:	Rabbit
Isotype:	IgG
Clonality:	Polyclonal
Immunogen:	Synthetic peptide of human GUK1
Formulation:	pH7.4 PBS, 0.05% NaN <sub>3</sub> , 40% Glycerol
Concentration:	lot specific
Purification:	Antigen affinity purification
Conjugation:	Unconjugated
Storage:	Store at -20°C as received.
Stability:	Stable for 12 months from date of receipt.
Predicted Protein Size:	22 kDa
Gene Name:	guanylate kinase 1
Database Link:	<a href="#">NP_000849</a> <a href="#">Entrez Gene 14923 Mouse</a> <a href="#">Entrez Gene 2987 Human</a> <a href="#">Q16774</a>
Background:	The protein encoded by this gene is an enzyme that catalyzes the transfer of a phosphate group from ATP to guanosine monophosphate (GMP) to form guanosine diphosphate (GDP). The encoded protein is thought to be a good target for cancer chemotherapy. Several transcript variants encoding different isoforms have been found for this gene.
Synonyms:	GMK

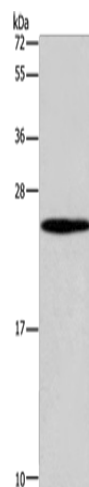


[View online »](#)

Protein Families: Druggable Genome

Protein Pathways: Metabolic pathways, Purine metabolism

### Product images:



Gel: 10%SDS-PAGE

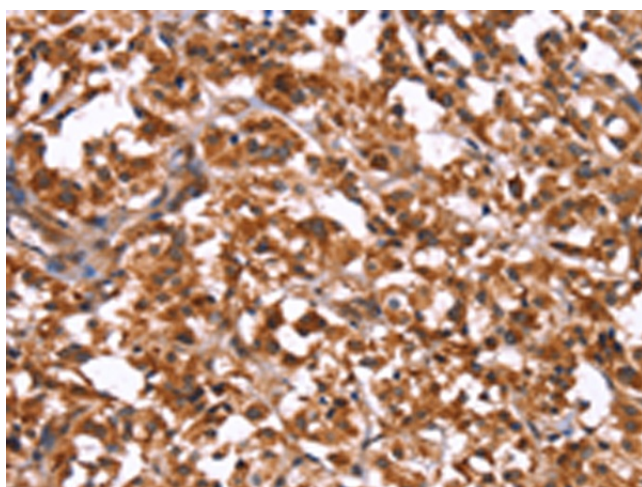
Lysate: 40  $\mu$ g

Lane: 231 cells

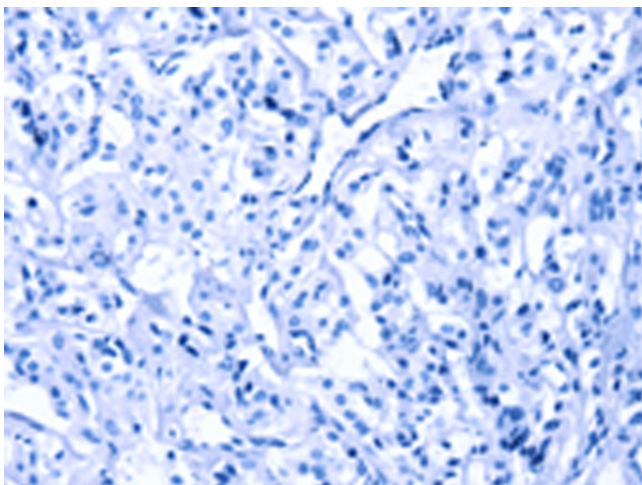
Primary antibody: TA351238 (GUK1 Antibody) at dilution 1/400

Secondary antibody: Goat anti rabbit IgG at 1/8000 dilution

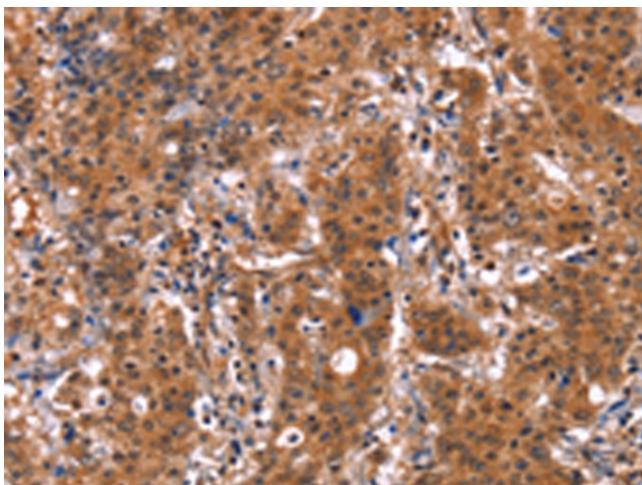
Exposure time: 1 minute



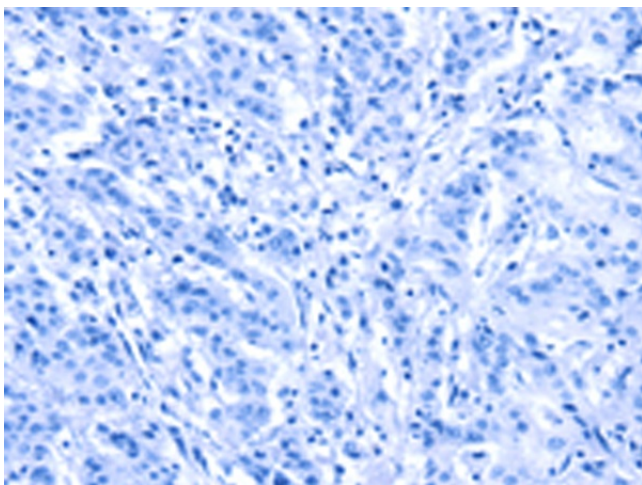
Immunohistochemistry of paraffin-embedded Human thyroid cancer tissue using TA351238 (GUK1 Antibody) at dilution 1/50 (Original magnification:  $\times$ 200)



Immunohistochemistry of paraffin-embedded Human thyroid cancer tissue using TA351238 (GUK1 Antibody) at dilution 1/50, treated with synthetic peptide. (Original magnification: ×200)



Immunohistochemistry of paraffin-embedded Human gastric cancer tissue using TA351238 (GUK1 Antibody) at dilution 1/50 (Original magnification: ×200)



Immunohistochemistry of paraffin-embedded Human gastric cancer tissue using TA351238 (GUK1 Antibody) at dilution 1/50, treated with synthetic peptide. (Original magnification: ×200)