

Product datasheet for **TA351235**

GPR65 Rabbit Polyclonal Antibody

Product data:

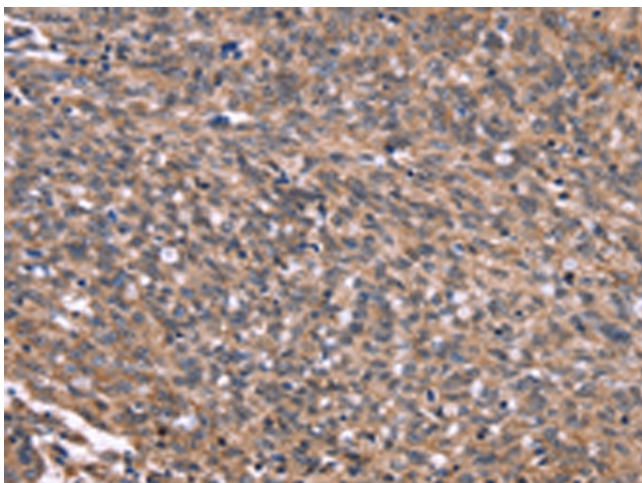
Product Type:	Primary Antibodies
Applications:	IHC
Recommended Dilution:	IHC: 50-200 Positive control: Human ovarian cancer Predicted cell location: Cytoplasm
Reactivity:	Human
Host:	Rabbit
Isotype:	IgG
Clonality:	Polyclonal
Immunogen:	Synthetic peptide of human GPR65
Formulation:	pH7.4 PBS, 0.05% NaN ₃ , 40% Glycerol
Concentration:	lot specific
Purification:	Antigen affinity purification
Conjugation:	Unconjugated
Storage:	Store at -20°C as received.
Stability:	Stable for 12 months from date of receipt.
Gene Name:	G protein-coupled receptor 65
Database Link:	NP_003599 Entrez Gene 8477 Human Q8IYL9
Background:	TDAG8 (for T-cell death-associated gene 8) is a seven transmembrane G protein-coupled receptor (GPCR) that was originally identified from a human thyroid cDNA library and subsequently shown to be expressed predominantly in thymus, lymph nodes, peripheral blood leukocytes and spleen. TDAG8, which is alternatively designated GPCR25, is grouped collectively with other GPCRs that are induced during T cell receptor engagement-mediated apoptosis and T cell activation, which also include G2A (for G2 accumulation) and P2Y2 (for P2 nucleotide) receptor.
Synonyms:	hTDAG8; TDAG8



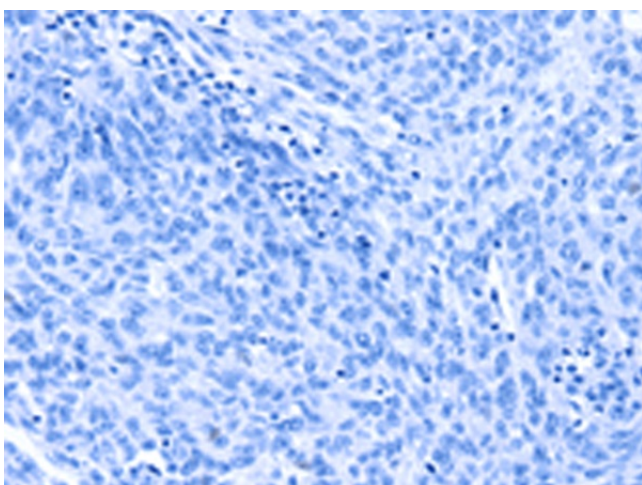
[View online »](#)

Protein Families: Druggable Genome, GPCR, Transmembrane

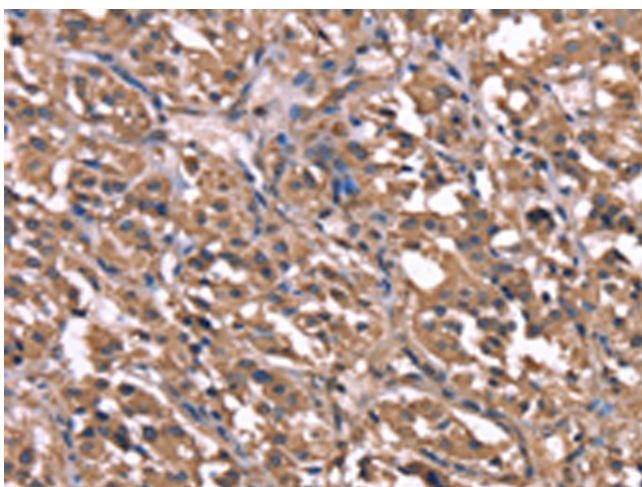
Product images:



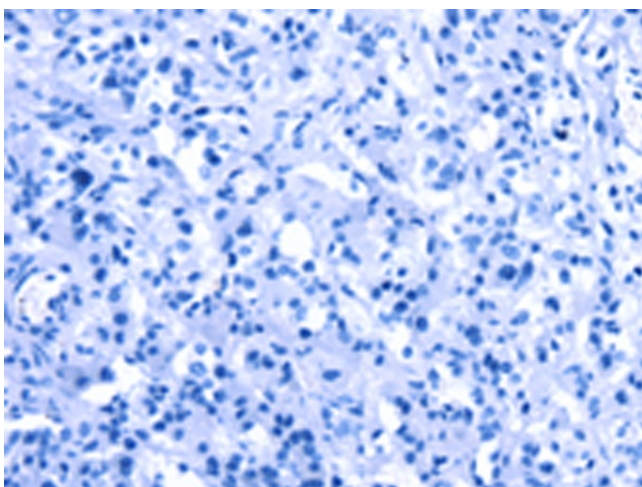
Immunohistochemistry of paraffin-embedded Human ovarian cancer tissue using TA351235 (GPR65 Antibody) at dilution 1/20 (Original magnification: $\times 200$)



Immunohistochemistry of paraffin-embedded Human ovarian cancer tissue using TA351235 (GPR65 Antibody) at dilution 1/20, treated with synthetic peptide. (Original magnification: $\times 200$)



Immunohistochemistry of paraffin-embedded Human thyroid cancer tissue using TA351235 (GPR65 Antibody) at dilution 1/20 (Original magnification: $\times 200$)



Immunohistochemistry of paraffin-embedded Human thyroid cancer tissue using TA351235 (GPR65 Antibody) at dilution 1/20, treated with synthetic peptide. (Original magnification: $\times 200$)