

Product datasheet for **TA351232**

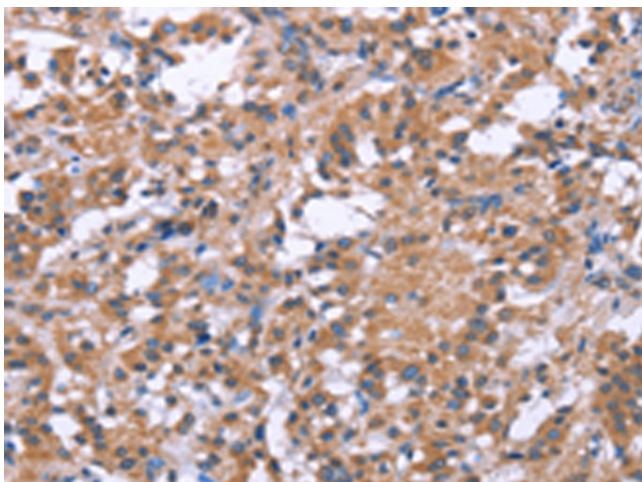
GPR172B (SLC52A1) Rabbit Polyclonal Antibody

Product data:

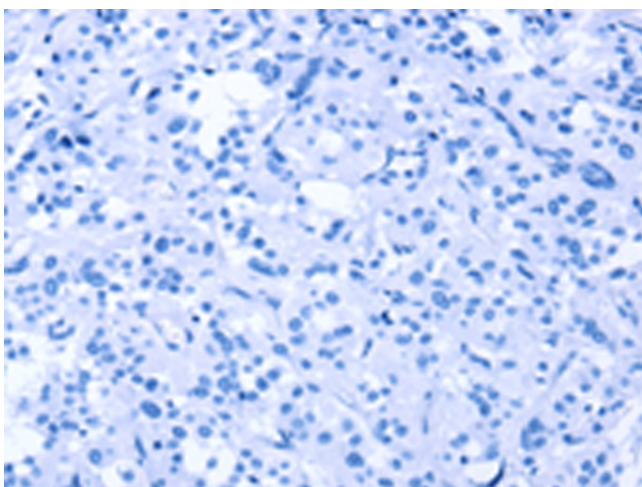
Product Type:	Primary Antibodies
Applications:	IHC
Recommended Dilution:	IHC: 50-200 Positive control: Human thyroid cancer Predicted cell location: Cytoplasm
Reactivity:	Human
Host:	Rabbit
Isotype:	IgG
Clonality:	Polyclonal
Immunogen:	Synthetic peptide of human SLC52A1
Formulation:	pH7.4 PBS, 0.05% NaN ₃ , 40% Glycerol
Concentration:	lot specific
Purification:	Antigen affinity purification
Conjugation:	Unconjugated
Storage:	Store at -20°C as received.
Stability:	Stable for 12 months from date of receipt.
Gene Name:	solute carrier family 52 member 1
Database Link:	NP_001098047 Entrez Gene 55065 Human Q9NWF4
Background:	Biological redox reactions require electron donors and acceptor. Vitamin B2 is the source for the flavin in flavin adenine dinucleotide (FAD) and flavin mononucleotide (FMN) which are common redox reagents. This gene encodes a member of the riboflavin (vitamin B2) transporter family. Haploinsufficiency of this protein can cause maternal riboflavin deficiency. Multiple alternatively spliced variants, encoding the same protein, have been identified.
Synonyms:	GPCR42; GPR172B; hRFT1; PAR2; RBFVD; RFT1; RFVT1
Protein Families:	Druggable Genome, GPCR, Transmembrane



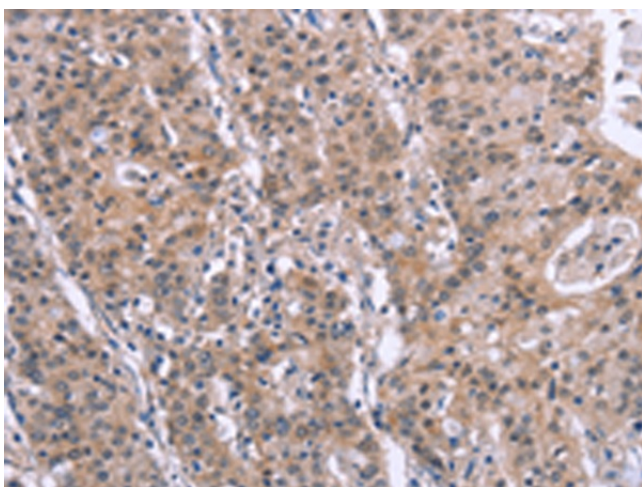
[View online »](#)

Product images:

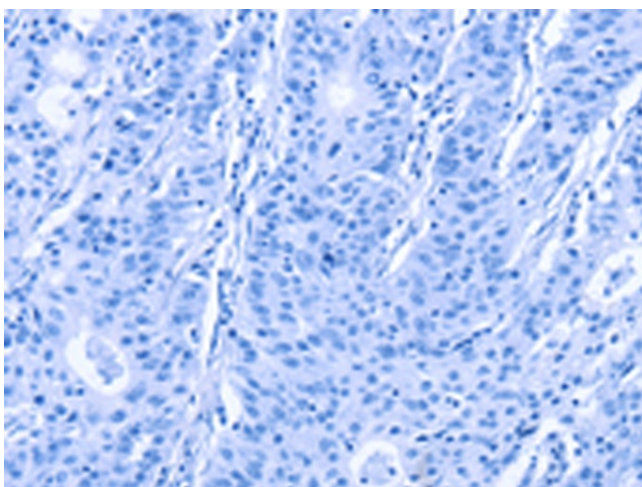
Immunohistochemistry of paraffin-embedded Human thyroid cancer tissue using TA351232 (SLC52A1 Antibody) at dilution 1/40 (Original magnification: $\times 200$)



Immunohistochemistry of paraffin-embedded Human thyroid cancer tissue using TA351232 (SLC52A1 Antibody) at dilution 1/40, treated with synthetic peptide. (Original magnification: $\times 200$)



Immunohistochemistry of paraffin-embedded Human gastric cancer tissue using TA351232 (SLC52A1 Antibody) at dilution 1/40 (Original magnification: $\times 200$)



Immunohistochemistry of paraffin-embedded Human gastric cancer tissue using TA351232 (SLC52A1 Antibody) at dilution 1/40, treated with synthetic peptide. (Original magnification: $\times 200$)