

Product datasheet for **TA351226**

GNAT3 Rabbit Polyclonal Antibody

Product data:

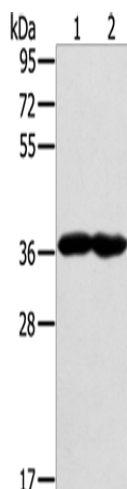
Product Type:	Primary Antibodies
Applications:	IHC, WB
Recommended Dilution:	WB: 500-2000 WB positive control: Mouse heart and muscle tissue IHC: 25-100 Positive control: Human thyroid cancer Predicted cell location: Cytoplasm
Reactivity:	Human, Mouse, Rat
Host:	Rabbit
Isotype:	IgG
Clonality:	Polyclonal
Immunogen:	Synthetic peptide of human GNAT3
Formulation:	pH7.4 PBS, 0.05% NaN ₃ , 40% Glycerol
Concentration:	lot specific
Purification:	Antigen affinity purification
Conjugation:	Unconjugated
Storage:	Store at -20°C as received.
Stability:	Stable for 12 months from date of receipt.
Predicted Protein Size:	40 kDa
Gene Name:	G protein subunit alpha transducin 3
Database Link:	NP_001095856 Entrez Gene 242851 Mouse Entrez Gene 286924 Rat Entrez Gene 346562 Human A8MTJ3
Background:	Guanine nucleotide-binding protein G(t) subunit alpha-3, also known as gustducin alpha-3 chain, is a protein that in humans is encoded by the GNAT3 gene. Gustducin alpha-3 chain is a subunit of the heterotrimeric protein gustducin that is responsible for basic taste.
Synonyms:	GDCA



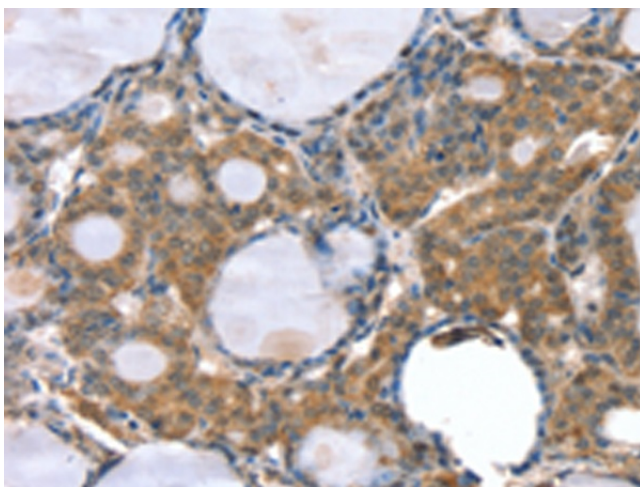
[View online »](#)

Protein Pathways: Taste transduction

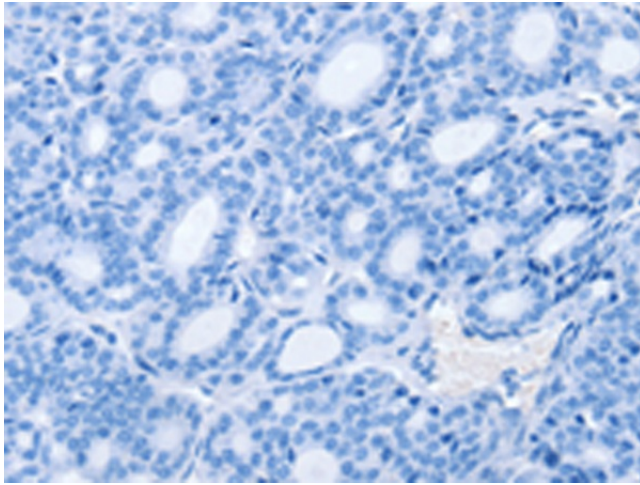
Product images:



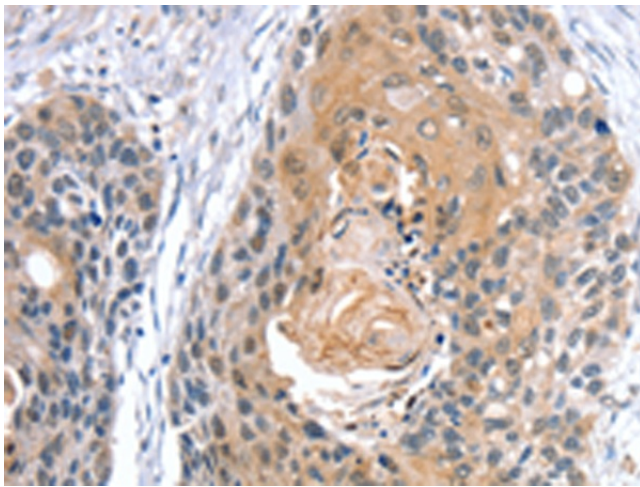
Gel: 8%SDS-PAGE
Lysate: 40 μ g
Lane 1-2: Mouse heart tissue
Mouse muscle tissue
Primary antibody: TA351226 (GNAT3 Antibody) at dilution 1/400
Secondary antibody: Goat anti rabbit IgG at 1/8000 dilution
Exposure time: 1 minute



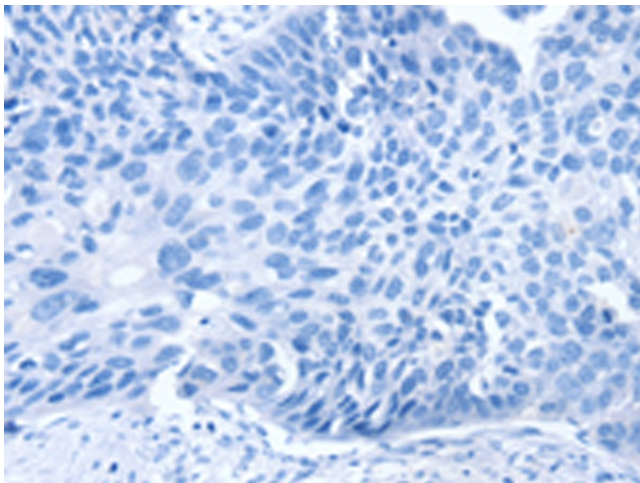
Immunohistochemistry of paraffin-embedded Human thyroid cancer tissue using TA351226 (GNAT3 Antibody) at dilution 1/35 (Original magnification: \times 200)



Immunohistochemistry of paraffin-embedded Human thyroid cancer tissue using TA351226 (GNAT3 Antibody) at dilution 1/35, treated with synthetic peptide. (Original magnification: ×200)



Immunohistochemistry of paraffin-embedded Human esophagus cancer tissue using TA351226 (GNAT3 Antibody) at dilution 1/35 (Original magnification: ×200)



Immunohistochemistry of paraffin-embedded Human esophagus cancer tissue using TA351226 (GNAT3 Antibody) at dilution 1/35, treated with synthetic peptide. (Original magnification: ×200)