

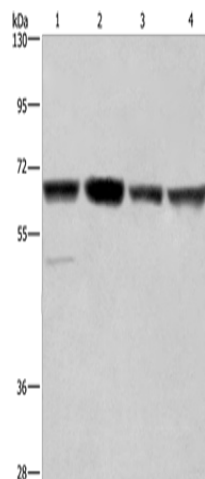
## Product datasheet for **TA351224**

### GLYR1 Rabbit Polyclonal Antibody

#### Product data:

Product Type:	Primary Antibodies
Applications:	WB
Recommended Dilution:	WB: 500-2000 WB positive control: Hela, Jurkat, K562 and HUVEC cells
Reactivity:	Human, Mouse, Rat
Host:	Rabbit
Isotype:	IgG
Clonality:	Polyclonal
Immunogen:	Synthetic peptide of human GLYR1
Formulation:	pH7.4 PBS, 0.05% NaN <sub>3</sub> , 40% Glycerol
Concentration:	lot specific
Purification:	Antigen affinity purification
Conjugation:	Unconjugated
Storage:	Store at -20°C as received.
Stability:	Stable for 12 months from date of receipt.
Predicted Protein Size:	61 kDa
Gene Name:	glyoxylate reductase 1 homolog
Database Link:	<a href="#">NP_115958</a> <a href="#">Entrez Gene 84656 Human</a> <a href="#">Q49A26</a>
Background:	Glyoxylate reductase 1 homolog (Arabidopsis) encodes a deduced 553-amino acid protein with a molecular mass of 60.5 kDa. GLYR1 contains 2 nuclear localization signals, an N-terminal PWWP domain and an AT-hook, and a C-terminal NAD-binding domain. Western blot, RT-PCR, and immunohistochemistry showed that GLYR1 localizes to the nucleus in a variety of cell lines.
Synonyms:	BM045; HIBDL; N-PAC; NP60

[View online »](#)

**Product images:**


Gel: 6%SDS-PAGE

Lysate: 40 µg

Lane 1-4: Hela cells

Jurkat cells

K562 cells

HUVEC cells

Primary antibody: TA351224 (GLYR1 Antibody) at dilution 1/350

Secondary antibody: Goat anti rabbit IgG at 1/8000 dilution

Exposure time: 40 seconds