

## Product datasheet for **TA351223**

### GLYR1 Rabbit Polyclonal Antibody

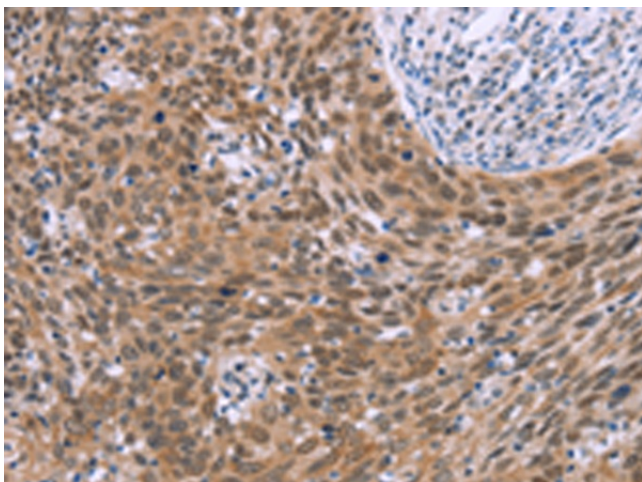
#### Product data:

Product Type:	Primary Antibodies
Applications:	IHC
Recommended Dilution:	IHC: 50-200 Positive control: Human cervical cancer Predicted cell location: Nucleus
Reactivity:	Human, Mouse, Rat
Host:	Rabbit
Isotype:	IgG
Clonality:	Polyclonal
Immunogen:	Synthetic peptide of human GLYR1
Formulation:	pH7.4 PBS, 0.05% NaN <sub>3</sub> , 40% Glycerol
Concentration:	lot specific
Purification:	Antigen affinity purification
Conjugation:	Unconjugated
Storage:	Store at -20°C as received.
Stability:	Stable for 12 months from date of receipt.
Gene Name:	glyoxylate reductase 1 homolog
Database Link:	<a href="#">NP_115958</a> <a href="#">Entrez Gene 84656 Human</a> <a href="#">Q49A26</a>
Background:	GLYR1 encodes a deduced 553-amino acid protein with a molecular mass of 60.5 kD. GLYR1 contains 2 nuclear localization signals, an N-terminal PWWP domain and an AT-hook, and a C-terminal NAD-binding domain. Western blot, RT-PCR, and immunohistochemistry showed that GLYR1 localizes to the nucleus in a variety of cell lines, with robust expression in mouse macrophage RAW274.7 cells.
Synonyms:	BM045; HIBDL; N-PAC; NP60

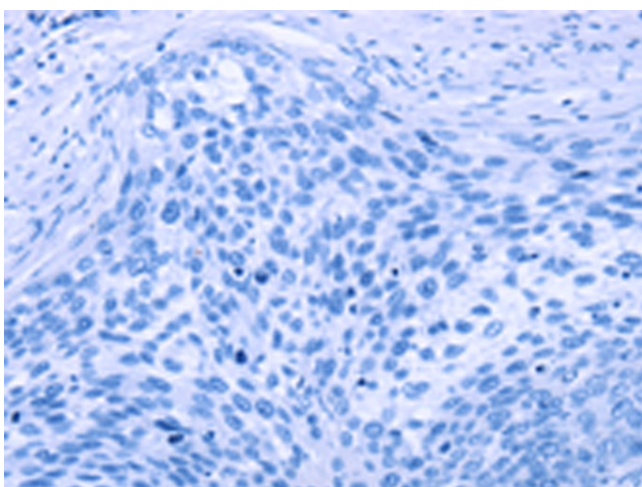


[View online »](#)

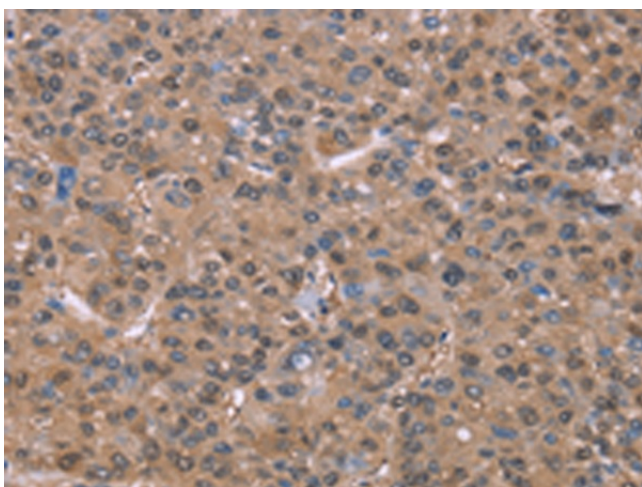
## Product images:



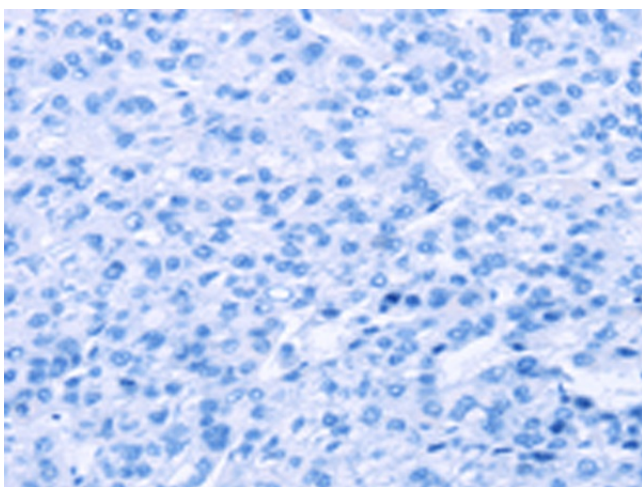
Immunohistochemistry of paraffin-embedded Human cervical cancer tissue using TA351223 (GLYR1 Antibody) at dilution 1/30 (Original magnification: ×200)



Immunohistochemistry of paraffin-embedded Human cervical cancer tissue using TA351223 (GLYR1 Antibody) at dilution 1/30, treated with synthetic peptide. (Original magnification: ×200)



Immunohistochemistry of paraffin-embedded Human liver cancer tissue using TA351223 (GLYR1 Antibody) at dilution 1/30 (Original magnification: ×200)



Immunohistochemistry of paraffin-embedded Human liver cancer tissue using TA351223 (GLYR1 Antibody) at dilution 1/30, treated with synthetic peptide. (Original magnification: ×200)