

Product datasheet for **TA351222S**

Glypican 6 (GPC6) Rabbit Polyclonal Antibody

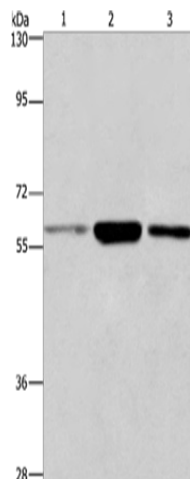
Product data:

Product Type:	Primary Antibodies
Applications:	IHC, WB
Recommended Dilution:	WB: 500-2000 WB positive control: K562 and 231 cells, human fetal liver tissue IHC: 50-200 Positive control: Human liver cancer Predicted cell location: Cytoplasm
Reactivity:	Human, Mouse
Host:	Rabbit
Isotype:	IgG
Clonality:	Polyclonal
Immunogen:	Synthetic peptide of human GPC6
Formulation:	pH7.4 PBS, 0.05% NaN ₃ , 40% Glycerol
Purification:	Antigen affinity purification
Conjugation:	Unconjugated
Storage:	Store at -20°C as received.
Stability:	Stable for 12 months from date of receipt.
Predicted Protein Size:	63 kDa
Gene Name:	glypican 6
Database Link:	NP_005699 Entrez Gene 23888 Mouse Entrez Gene 10082 Human Q9Y625
Background:	The glypicans comprise a family of glycosylphosphatidylinositol-anchored heparan sulfate proteoglycans, and they have been implicated in the control of cell growth and cell division. The glypican encoded by this gene is a putative cell surface coreceptor for growth factors, extracellular matrix proteins, proteases and anti-proteases.
Synonyms:	OMIMD1
Protein Families:	Druggable Genome

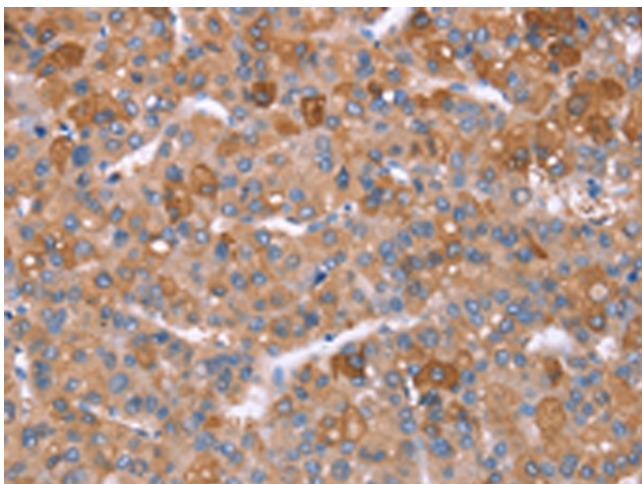


[View online »](#)

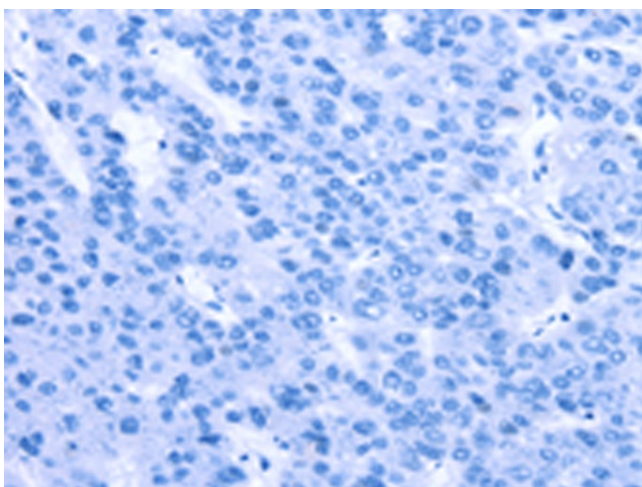
Product images:



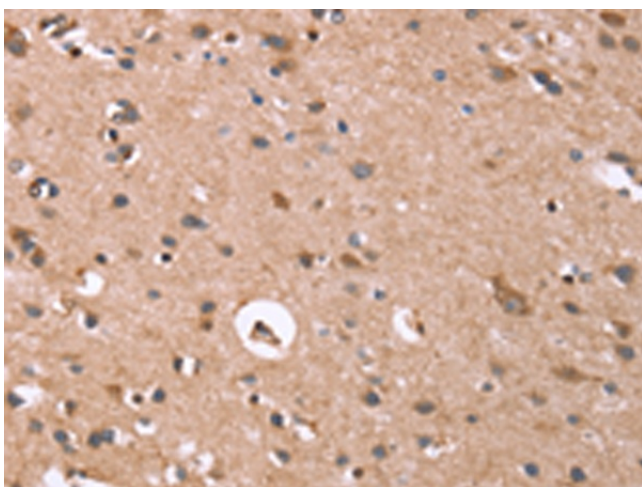
Gel: 6%SDS-PAGE
 Lysate: 40 µg
 Lane 1-3: K562 cells
 231 cells
 human fetal liver tissue
 Primary antibody: [TA351222] (GPC6 Antibody) at dilution 1/750
 Secondary antibody: Goat anti rabbit IgG at 1/8000 dilution
 Exposure time: 1 minute



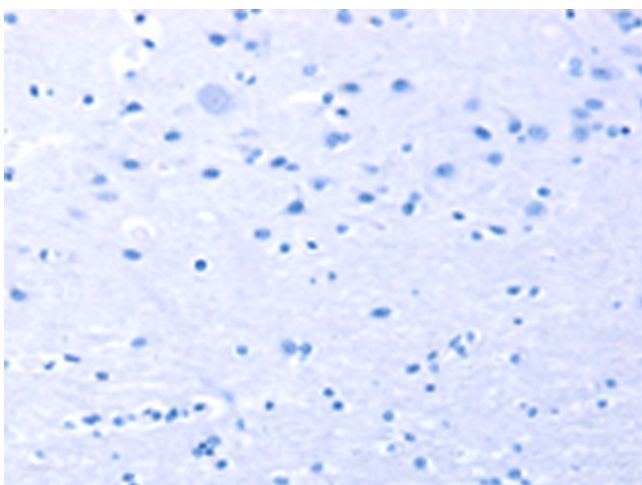
Immunohistochemistry of paraffin-embedded Human liver cancer tissue using [TA351222] (GPC6 Antibody) at dilution 1/40 (Original magnification: ×200)



Immunohistochemistry of paraffin-embedded Human liver cancer tissue using [TA351222] (GPC6 Antibody) at dilution 1/40, treated with synthetic peptide. (Original magnification: ×200)



Immunohistochemistry of paraffin-embedded Human brain tissue using [TA351222] (GPC6 Antibody) at dilution 1/40 (Original magnification: ×200)



Immunohistochemistry of paraffin-embedded Human brain tissue using [TA351222] (GPC6 Antibody) at dilution 1/40, treated with synthetic peptide. (Original magnification: ×200)