

Product datasheet for **TA351221S**

Glutaminase (GLS) Rabbit Polyclonal Antibody

Product data:

Product Type:	Primary Antibodies
Applications:	IHC, WB
Recommended Dilution:	WB: 500-2000 WB positive control: 293T cell lysate IHC: 50-200 Positive control: Human liver cancer Predicted cell location: Cytoplasm
Reactivity:	Human, Mouse, Rat
Host:	Rabbit
Isotype:	IgG
Clonality:	Polyclonal
Immunogen:	Synthetic peptide of human GLS
Formulation:	pH7.4 PBS, 0.05% NaN ₃ , 40% Glycerol
Purification:	Antigen affinity purification
Conjugation:	Unconjugated
Storage:	Store at -20°C as received.
Stability:	Stable for 12 months from date of receipt.
Predicted Protein Size:	73 kDa
Gene Name:	glutaminase
Database Link:	NP_055720 Entrez Gene 14660 Mouse Entrez Gene 24398 Rat Entrez Gene 2744 Human O94925

Background: This gene encodes the K-type mitochondrial glutaminase. The encoded protein is an phosphate-activated amidohydrolase that catalyzes the hydrolysis of glutamine to glutamate and ammonia. This protein is primarily expressed in the brain and kidney plays an essential role in generating energy for metabolism, synthesizing the brain neurotransmitter glutamate and maintaining acid-base balance in the kidney. Alternate splicing results in multiple transcript variants.

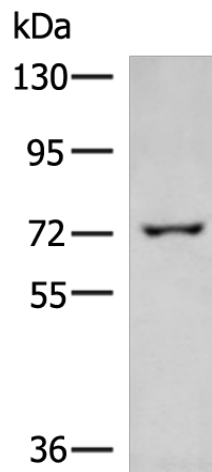


[View online »](#)

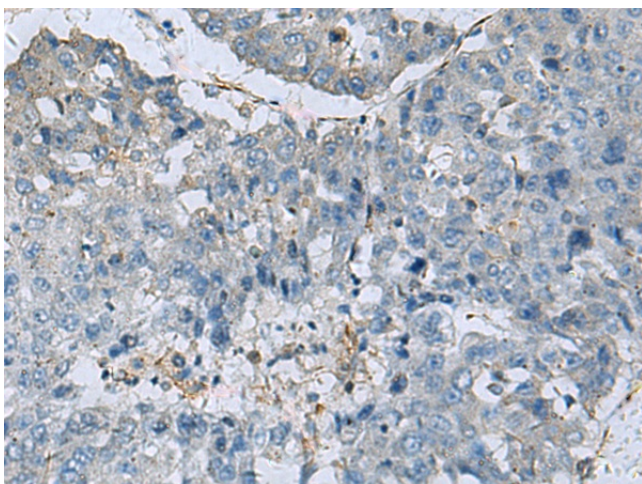
Synonyms: AAD20; GAC; GAM; GLS1; KGA

Protein Pathways: Alanine, aspartate and glutamate metabolism, Arginine and proline metabolism, D-Glutamine and D-glutamate metabolism, Metabolic pathways, Nitrogen metabolism

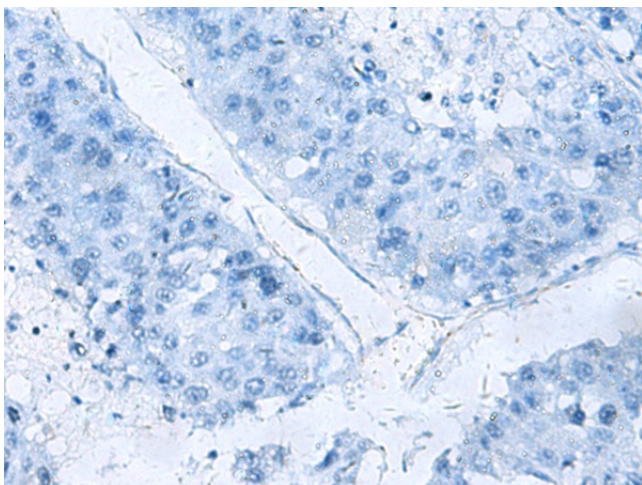
Product images:



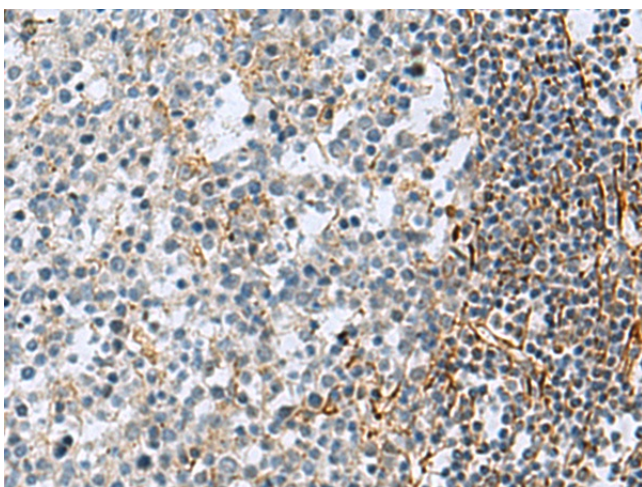
Gel: 6%SDS-PAGE
Lysate: 40 μ g
Lane: 293T cell lysate
Primary antibody: [TA351221] (GLS Antibody) at dilution 1/850
Secondary antibody: Goat anti rabbit IgG at 1/5000 dilution
Exposure time: 1 minute



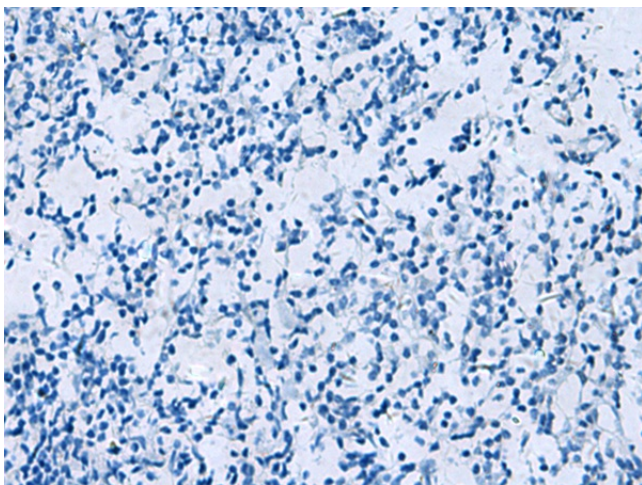
Immunohistochemistry of paraffin-embedded Human liver cancer tissue using [TA351221] (GLS Antibody) at dilution 1/70 (Original magnification: \times 200)



Immunohistochemistry of paraffin-embedded Human liver cancer tissue using [TA351221] (GLS Antibody) at dilution 1/70, treated with synthetic peptide. (Original magnification: $\times 200$)



Immunohistochemistry of paraffin-embedded Human tonsil tissue using [TA351221] (GLS Antibody) at dilution 1/70 (Original magnification: $\times 200$)



Immunohistochemistry of paraffin-embedded Human tonsil tissue using [TA351221] (GLS Antibody) at dilution 1/70, treated with synthetic peptide. (Original magnification: $\times 200$)