

Product datasheet for **TA351220**

Glucagon Receptor (GCGR) Rabbit Polyclonal Antibody

Product data:

Product Type:	Primary Antibodies
Applications:	IHC, WB
Recommended Dilution:	WB: 500-2000 WB positive control: LOVO cell, Mouse heart tissue lysates IHC: 50-100 Positive control: Human tonsil Predicted cell location: Cell membrane
Reactivity:	Human, Mouse, Rat
Host:	Rabbit
Isotype:	IgG
Clonality:	Polyclonal
Immunogen:	Synthetic peptide of human GCGR
Formulation:	pH7.4 PBS, 0.05% NaN ₃ , 40% Glycerol
Concentration:	lot specific
Purification:	Antigen affinity purification
Conjugation:	Unconjugated
Storage:	Store at -20°C as received.
Stability:	Stable for 12 months from date of receipt.
Predicted Protein Size:	54 kDa
Gene Name:	glucagon receptor
Database Link:	NP_000151 Entrez Gene 14527 Mouse Entrez Gene 24953 Rat Entrez Gene 2642 Human P47871
Background:	The protein encoded by this gene is a glucagon receptor that is important in controlling blood glucose levels. Defects in this gene are a cause of non-insulin-dependent diabetes mellitus (NIDDM).
Synonyms:	GGR; GL-R

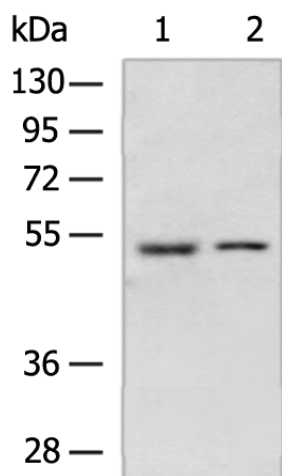


[View online »](#)

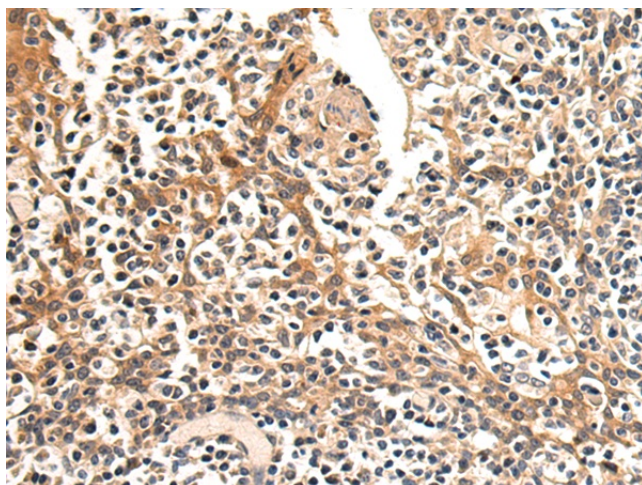
Protein Families: Druggable Genome, GPCR, Transmembrane

Protein Pathways: Neuroactive ligand-receptor interaction

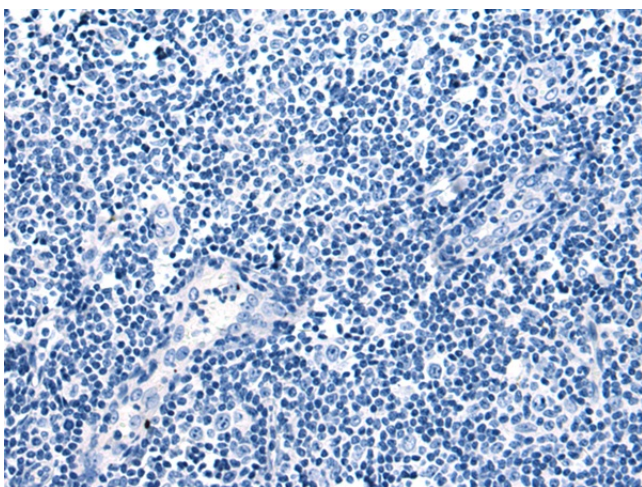
Product images:



Gel: 8%SDS-PAGE
 Lysate: 40 µg
 Lane: LOVO cell lysate
 Primary antibody: TA351220 (GCGR Antibody) at dilution 1/700
 Secondary antibody: Goat anti rabbit IgG at 1/5000 dilution
 Exposure time: 5 minutes



Immunohistochemistry of paraffin-embedded Human prostate cancer tissue using TA351220 (GCGR Antibody) at dilution 1/50 (Original magnification: ×200)



Immunohistochemistry of paraffin-embedded Human prostate cancer tissue using TA351220 (GCGR Antibody) at dilution 1/50, treated with synthetic peptide. (Original magnification: $\times 200$)