

Product datasheet for **TA351218**

GCKR Rabbit Polyclonal Antibody

Product data:

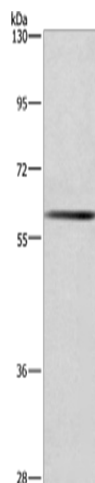
Product Type:	Primary Antibodies
Applications:	IHC, WB
Recommended Dilution:	WB: 500-2000 WB positive control: Mouse liver tissue IHC: 100-300 Positive control: Human colon cancer Predicted cell location: Cytoplasm
Reactivity:	Human, Mouse, Rat
Host:	Rabbit
Isotype:	IgG
Clonality:	Polyclonal
Immunogen:	Synthetic peptide of human GCKR
Formulation:	pH7.4 PBS, 0.05% NaN ₃ , 40% Glycerol
Concentration:	lot specific
Purification:	Antigen affinity purification
Conjugation:	Unconjugated
Storage:	Store at -20°C as received.
Stability:	Stable for 12 months from date of receipt.
Predicted Protein Size:	69 kDa
Gene Name:	glucokinase (hexokinase 4) regulator
Database Link:	NP_001477 Entrez Gene 25658 Rat Entrez Gene 231103 Mouse Entrez Gene 2646 Human Q14397
Background:	This gene encodes a protein belonging to the GCKR subfamily of the SIS (Sugar ISomerase) family of proteins. The gene product is a regulatory protein that inhibits glucokinase in liver and pancreatic islet cells by binding non-covalently to form an inactive complex with the enzyme. This gene is considered a susceptibility gene candidate for a form of maturity-onset diabetes of the young (MODY).



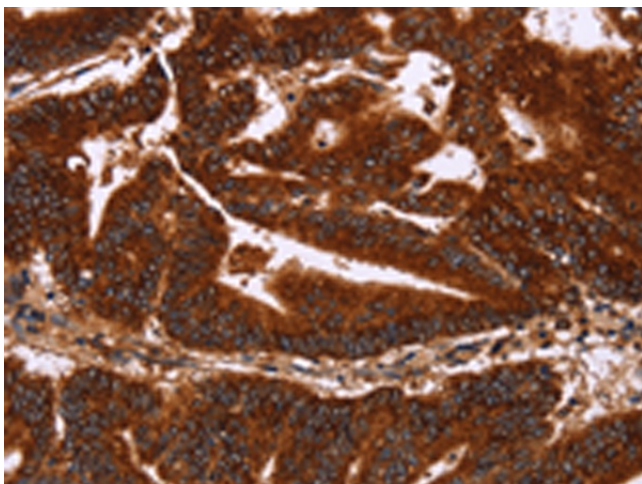
[View online »](#)

Synonyms: FGQTL5; GGRP

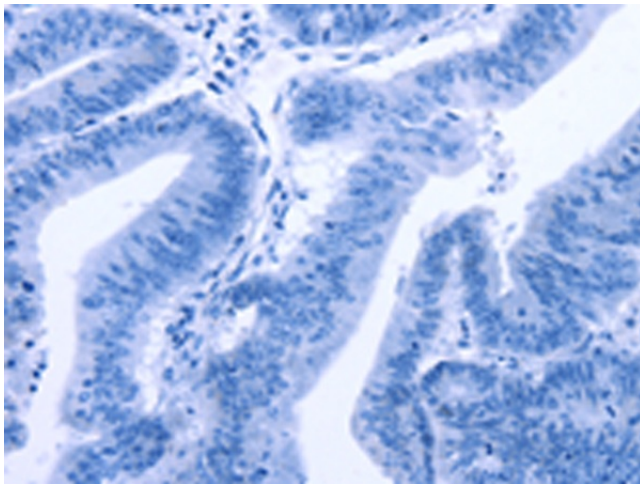
Product images:



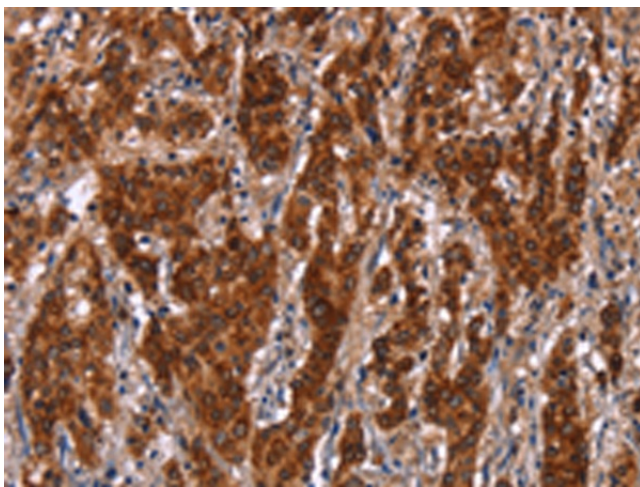
Gel: 6%SDS-PAGE
Lysate: 40 μ g
Lane: Mouse liver tissue
Primary antibody: TA351218 (GCKR Antibody) at dilution 1/750
Secondary antibody: Goat anti rabbit IgG at 1/8000 dilution
Exposure time: 10 seconds



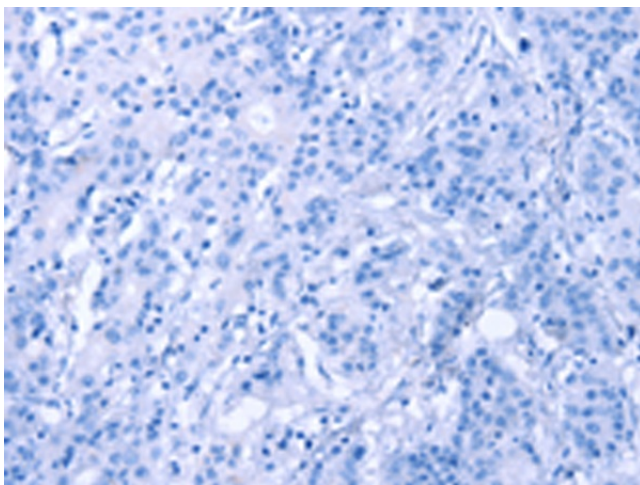
Immunohistochemistry of paraffin-embedded Human colon cancer tissue using TA351218 (GCKR Antibody) at dilution 1/50 (Original magnification: \times 200)



Immunohistochemistry of paraffin-embedded Human colon cancer tissue using TA351218 (GCKR Antibody) at dilution 1/50, treated with synthetic peptide. (Original magnification: ×200)



Immunohistochemistry of paraffin-embedded Human gastric cancer tissue using TA351218 (GCKR Antibody) at dilution 1/50 (Original magnification: ×200)



Immunohistochemistry of paraffin-embedded Human gastric cancer tissue using TA351218 (GCKR Antibody) at dilution 1/50, treated with synthetic peptide. (Original magnification: ×200)