

Product datasheet for **TA351214S**

Growth Hormone (GH1) Rabbit Polyclonal Antibody

Product data:

| | |
|-------------------------|--|
| Product Type: | Primary Antibodies |
| Applications: | IHC, WB |
| Recommended Dilution: | WB: 200-1000 WB positive control: Human placenta tissue IHC: 50-200 Positive control: Human brain Predicted cell location: Cytoplasm |
| Reactivity: | Human |
| Host: | Rabbit |
| Isotype: | IgG |
| Clonality: | Polyclonal |
| Immunogen: | Synthetic peptide of human GH1 |
| Formulation: | pH7.4 PBS, 0.05% NaN ₃ , 40% Glycerol |
| Purification: | Antigen affinity purification |
| Conjugation: | Unconjugated |
| Storage: | Store at -20°C as received. |
| Stability: | Stable for 12 months from date of receipt. |
| Predicted Protein Size: | 25 kDa |
| Gene Name: | growth hormone 1 |
| Database Link: | NP_072053 Entrez Gene 2688 Human P01241 |



[View online »](#)

Background:

The protein encoded by this gene is a member of the somatotropin/prolactin family of hormones which play an important role in growth control. The gene, along with four other related genes, is located at the growth hormone locus on chromosome 17 where they are interspersed in the same transcriptional orientation; an arrangement which is thought to have evolved by a series of gene duplications. The five genes share a remarkably high degree of sequence identity. Alternative splicing generates additional isoforms of each of the five growth hormones, leading to further diversity and potential for specialization. This particular family member is expressed in the pituitary but not in placental tissue as is the case for the other four genes in the growth hormone locus. Mutations in or deletions of the gene lead to growth hormone deficiency and short stature.

Synonyms:

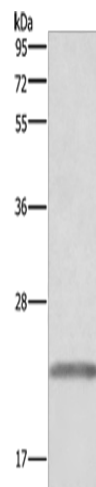
GH; GH-N; GHN; hGH-N; IGHD1B

Protein Families:

Druggable Genome, Secreted Protein

Protein Pathways:

Cytokine-cytokine receptor interaction, Jak-STAT signaling pathway, Neuroactive ligand-receptor interaction

Product images:

Gel: 10%SDS-PAGE

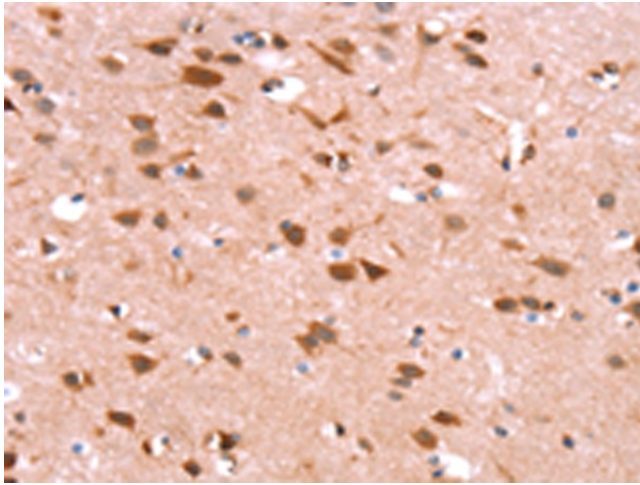
Lysate: 40 µg

Lane: Human placenta tissue

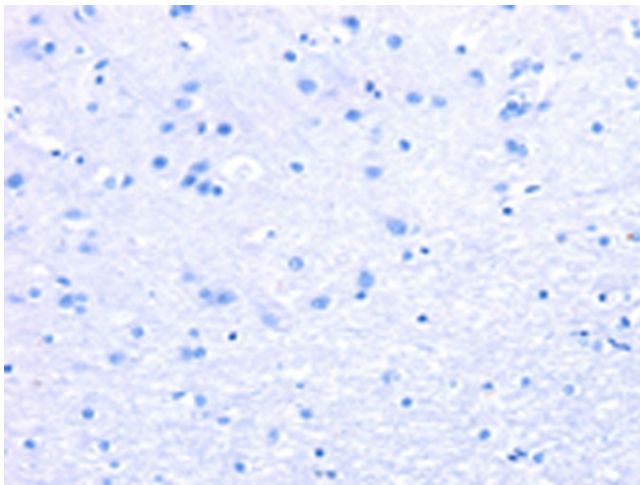
Primary antibody: [TA351214] (GH1 Antibody) at dilution 1/500

Secondary antibody: Goat anti rabbit IgG at 1/8000 dilution

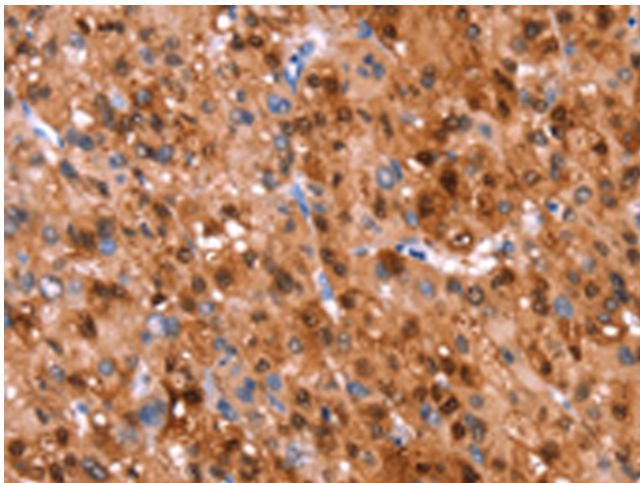
Exposure time: 1 second



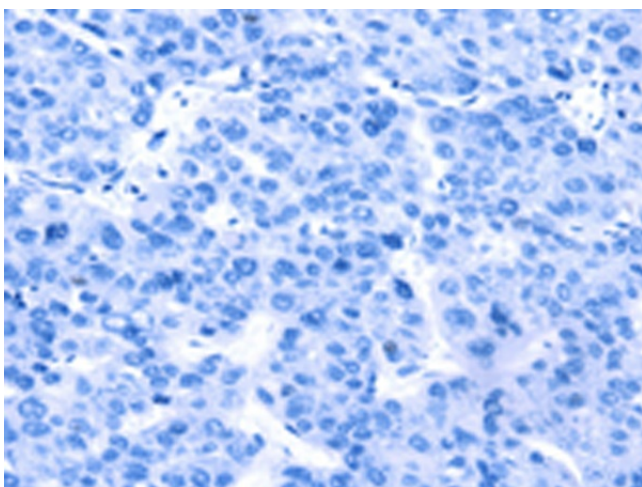
Immunohistochemistry of paraffin-embedded Human brain tissue using [TA351214] (GH1 Antibody) at dilution 1/40 (Original magnification: ×200)



Immunohistochemistry of paraffin-embedded Human brain tissue using [TA351214] (GH1 Antibody) at dilution 1/40, treated with synthetic peptide. (Original magnification: ×200)



Immunohistochemistry of paraffin-embedded Human liver cancer tissue using [TA351214] (GH1 Antibody) at dilution 1/40 (Original magnification: ×200)



Immunohistochemistry of paraffin-embedded Human liver cancer tissue using [TA351214] (GH1 Antibody) at dilution 1/40, treated with synthetic peptide. (Original magnification: ×200)