

Product datasheet for **TA351209S**

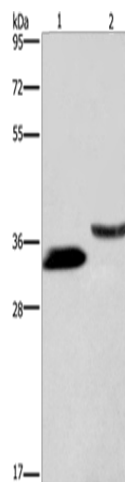
GAS1 Rabbit Polyclonal Antibody

Product data:

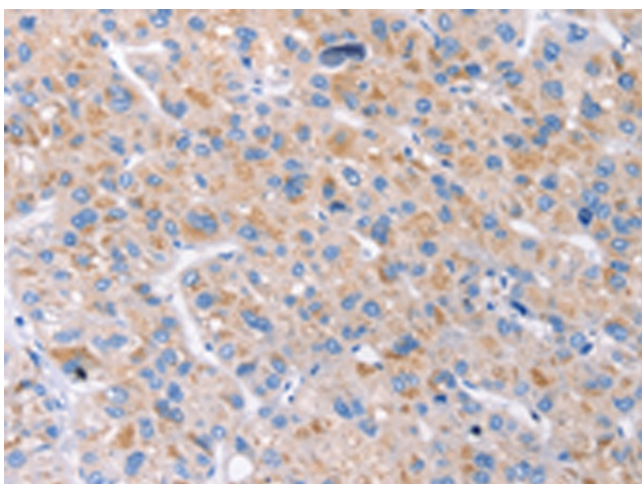
Product Type:	Primary Antibodies
Applications:	IHC, WB
Recommended Dilution:	WB: 200-1000 WB positive control: 293T cells and human kidney tissue IHC: 10-50 Positive control: Human liver cancer Predicted cell location: Cytoplasm
Reactivity:	Human
Host:	Rabbit
Isotype:	IgG
Clonality:	Polyclonal
Immunogen:	Synthetic peptide of human GAS1
Formulation:	pH7.4 PBS, 0.05% NaN ₃ , 40% Glycerol
Purification:	Antigen affinity purification
Conjugation:	Unconjugated
Storage:	Store at -20°C as received.
Stability:	Stable for 12 months from date of receipt.
Predicted Protein Size:	36 kDa
Gene Name:	growth arrest specific 1
Database Link:	NP_002039 Entrez Gene 2619 Human P54826
Background:	Growth arrest-specific 1 plays a role in growth suppression. GAS1 blocks entry to S phase and prevents cycling of normal and transformed cells. Gas1 is a putative tumor suppressor gene.
Synonyms:	growth arrest-specific 1; Growth arrest-specific gene-1; OTTHUMP00000021599
Protein Pathways:	Hedgehog signaling pathway



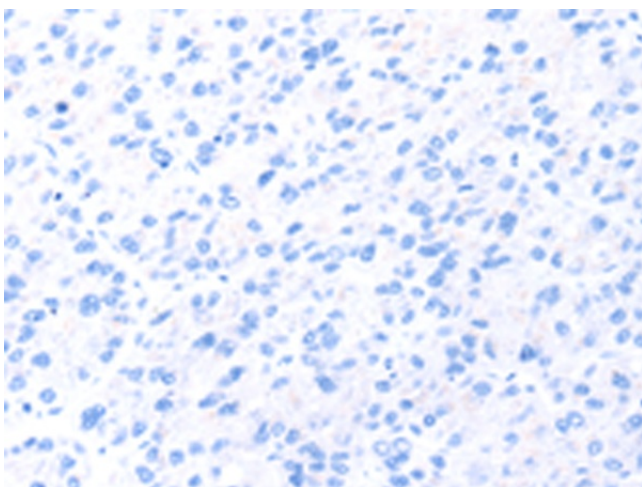
[View online »](#)

Product images:

Gel: 8%SDS-PAGE
Lysate: 40 μ g
Lane 1-2: 293T cells
human kidney tissue
Primary antibody: [TA351209] (GAS1 Antibody) at
dilution 1/100
Secondary antibody: Goat anti rabbit IgG at
1/8000 dilution
Exposure time: 3 minutes



Immunohistochemistry of paraffin-embedded
Human liver cancer tissue using [TA351209]
(GAS1 Antibody) at dilution 1/20 (Original
magnification: \times 200)



Immunohistochemistry of paraffin-embedded Human liver cancer tissue using [TA351209] (GAS1 Antibody) at dilution 1/20, treated with synthetic peptide. (Original magnification: ×200)