

## Product datasheet for **TA351209**

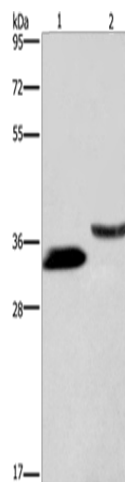
### **GAS1 Rabbit Polyclonal Antibody**

#### **Product data:**

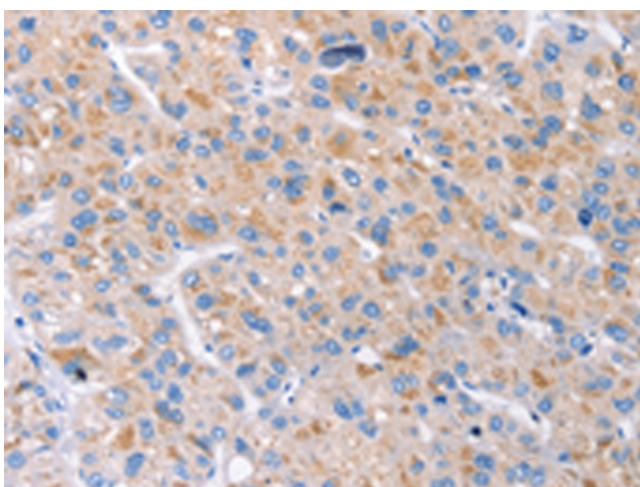
<b>Product Type:</b>	Primary Antibodies
<b>Applications:</b>	IHC, WB
<b>Recommended Dilution:</b>	WB: 200-1000 WB positive control: 293T cells and human kidney tissue IHC: 10-50 Positive control: Human liver cancer Predicted cell location: Cytoplasm
<b>Reactivity:</b>	Human
<b>Host:</b>	Rabbit
<b>Isotype:</b>	IgG
<b>Clonality:</b>	Polyclonal
<b>Immunogen:</b>	Synthetic peptide of human GAS1
<b>Formulation:</b>	pH7.4 PBS, 0.05% NaN <sub>3</sub> , 40% Glycerol
<b>Concentration:</b>	lot specific
<b>Purification:</b>	Antigen affinity purification
<b>Conjugation:</b>	Unconjugated
<b>Storage:</b>	Store at -20°C as received.
<b>Stability:</b>	Stable for 12 months from date of receipt.
<b>Predicted Protein Size:</b>	36 kDa
<b>Gene Name:</b>	growth arrest specific 1
<b>Database Link:</b>	<a href="#">NP_002039</a> <a href="#">Entrez Gene 2619 Human</a> <a href="#">P54826</a>
<b>Background:</b>	Growth arrest-specific 1 plays a role in growth suppression. GAS1 blocks entry to S phase and prevents cycling of normal and transformed cells. Gas1 is a putative tumor suppressor gene.
<b>Synonyms:</b>	growth arrest-specific 1; Growth arrest-specific gene-1; OTTHUMP00000021599
<b>Protein Pathways:</b>	Hedgehog signaling pathway



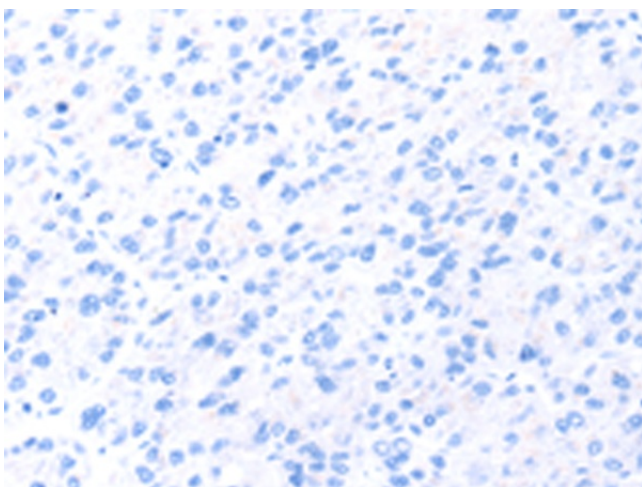
[View online »](#)

**Product images:**

Gel: 8%SDS-PAGE  
Lysate: 40  $\mu$ g  
Lane 1-2: 293T cells  
human kidney tissue  
Primary antibody: TA351209 (GAS1 Antibody) at  
dilution 1/100  
Secondary antibody: Goat anti rabbit IgG at  
1/8000 dilution  
Exposure time: 3 minutes



Immunohistochemistry of paraffin-embedded  
Human liver cancer tissue using TA351209 (GAS1  
Antibody) at dilution 1/20 (Original magnification:  
 $\times$ 200)



Immunohistochemistry of paraffin-embedded Human liver cancer tissue using TA351209 (GAS1 Antibody) at dilution 1/20, treated with synthetic peptide. (Original magnification:  $\times 200$ )