

## Product datasheet for **TA351208S**

### Galactosylceramidase (GALC) Rabbit Polyclonal Antibody

#### Product data:

Product Type:	Primary Antibodies
Applications:	IHC, WB
Recommended Dilution:	WB: 200-1000 WB positive control: Mouse brain tissue IHC: 20-100 Positive control: Human gastric cancer Predicted cell location: Cytoplasm
Reactivity:	Human, Mouse
Host:	Rabbit
Isotype:	IgG
Clonality:	Polyclonal
Immunogen:	Synthetic peptide of human GALC
Formulation:	pH7.4 PBS, 0.05% NaN <sub>3</sub> , 40% Glycerol
Purification:	Antigen affinity purification
Conjugation:	Unconjugated
Storage:	Store at -20°C as received.
Stability:	Stable for 12 months from date of receipt.
Predicted Protein Size:	77 kDa
Gene Name:	galactosylceramidase
Database Link:	<a href="#">NP_001032614</a> <a href="#">Entrez Gene 14420 Mouse</a> <a href="#">Entrez Gene 2581 Human</a> <a href="#">P54803</a>

**Background:** This gene encodes a lysosomal protein which hydrolyzes the galactose ester bonds of galactosylceramide, galactosylsphingosine, lactosylceramide, and monogalactosyldiglyceride. Mutations in this gene have been associated with Krabbe disease, also known as globoid cell leukodystrophy. Alternate transcriptional splice variants, encoding different isoforms, have been characterized.



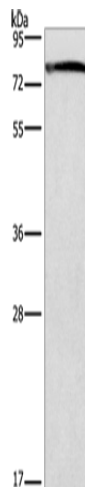
[View online »](#)

**Synonyms:** galactocerebrosidase; galactocerebroside beta-galactosidase; galactosylceramidase; galactosylceramide beta-galactosidase; galactosylceraminidase; GALCERase; OTTHUMP00000027906

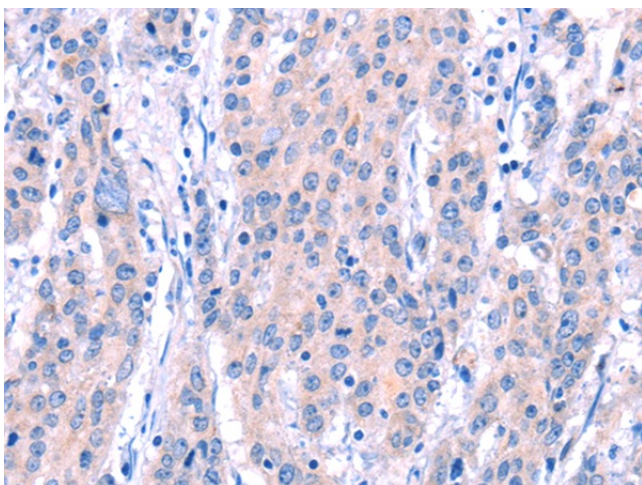
**Protein Families:** Druggable Genome

**Protein Pathways:** Lysosome, Metabolic pathways, Sphingolipid metabolism

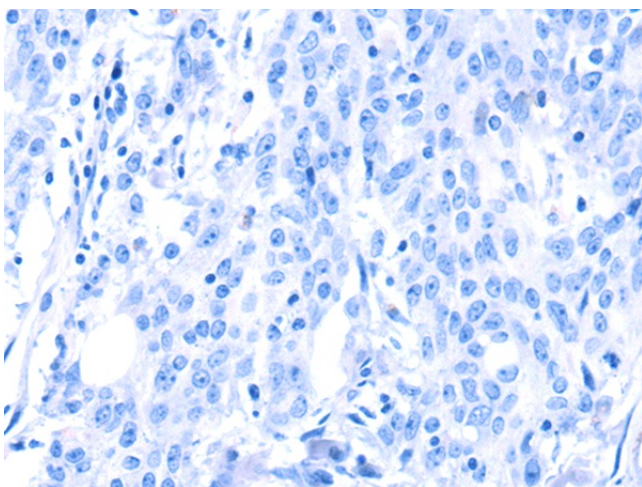
**Product images:**



Gel: 8%SDS-PAGE  
 Lysate: 40 µg  
 Lane: Mouse brain tissue  
 Primary antibody: [TA351208] (GALC Antibody) at dilution 1/300  
 Secondary antibody: Goat anti rabbit IgG at 1/8000 dilution  
 Exposure time: 1 minute



Immunohistochemistry of paraffin-embedded Human gastric cancer tissue using [TA351208] (GALC Antibody) at dilution 1/15 (Original magnification: x200)



Immunohistochemistry of paraffin-embedded Human gastric cancer tissue using [TA351208] (GALC Antibody) at dilution 1/15, treated with synthetic peptide. (Original magnification: ×200)