

## Product datasheet for **TA351206S**

### GABA A Receptor gamma 2 (GABRG2) Rabbit Polyclonal Antibody

#### Product data:

Product Type:	Primary Antibodies
Applications:	IHC, WB
Recommended Dilution:	WB: 500-2000 WB positive control: Mouse brain and human fetal brain tissue IHC: 25-100 Positive control: Human thyroid cancer Predicted cell location: Cytoplasm
Reactivity:	Human, Mouse, Rat
Host:	Rabbit
Isotype:	IgG
Clonality:	Polyclonal
Immunogen:	Synthetic peptide of human GABRG2
Formulation:	pH7.4 PBS, 0.05% NaN <sub>3</sub> , 40% Glycerol
Purification:	Antigen affinity purification
Conjugation:	Unconjugated
Storage:	Store at -20°C as received.
Stability:	Stable for 12 months from date of receipt.
Predicted Protein Size:	54 kDa
Gene Name:	gamma-aminobutyric acid type A receptor gamma2 subunit
Database Link:	<a href="#">NP_944494</a> <a href="#">Entrez Gene 14406 Mouse</a> <a href="#">Entrez Gene 29709 Rat</a> <a href="#">Entrez Gene 2566 Human</a> <a href="#">P18507</a>

**Background:** This gene encodes a gamma-aminobutyric acid (GABA) receptor. GABA is the major inhibitory neurotransmitter in the mammalian brain, where it acts at GABA-A receptors, which are ligand-gated chloride channels. GABA-A receptors are pentameric, consisting of proteins from several subunit classes: alpha, beta, gamma, delta and rho. Mutations in this gene have been associated with epilepsy and febrile seizures. Multiple transcript variants encoding different isoforms have been identified for this gene.



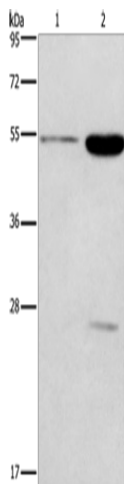
[View online »](#)

**Synonyms:** CAE2; ECA2; GEFSP3

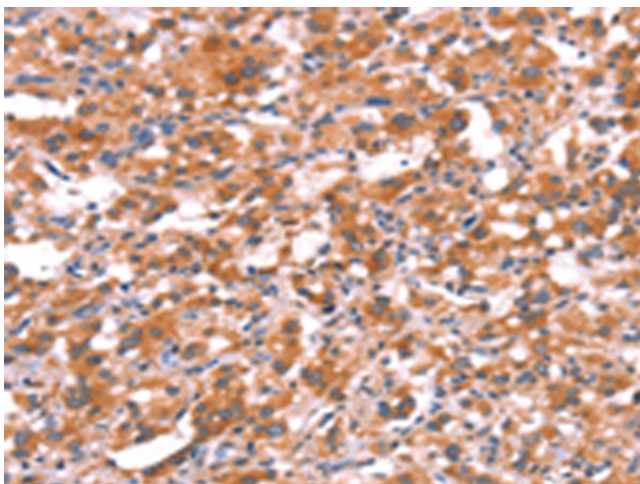
**Protein Families:** Druggable Genome, Ion Channels: Cys-loop Receptors, Transmembrane

**Protein Pathways:** Neuroactive ligand-receptor interaction

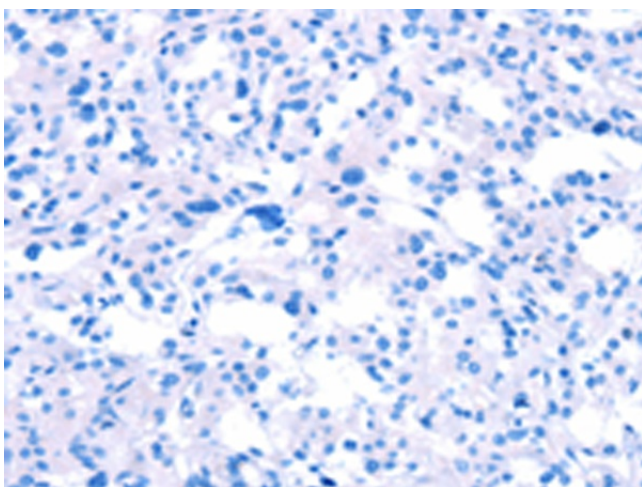
**Product images:**



Gel: 8%SDS-PAGE  
 Lysate: 40 µg  
 Lane 1-2: Mouse brain tissue  
 human fetal brain tissue  
 Primary antibody: [TA351206] (GABRG2 Antibody)  
 at dilution 1/300  
 Secondary antibody: Goat anti rabbit IgG at  
 1/8000 dilution  
 Exposure time: 1 minute



Immunohistochemistry of paraffin-embedded  
 Human thyroid cancer tissue using [TA351206]  
 (GABRG2 Antibody) at dilution 1/20 (Original  
 magnification: ×200)



Immunohistochemistry of paraffin-embedded Human thyroid cancer tissue using [TA351206] (GABRG2 Antibody) at dilution 1/20, treated with synthetic peptide. (Original magnification: ×200)