

## Product datasheet for **TA351203S**

### SLC6A1 Rabbit Polyclonal Antibody

#### Product data:

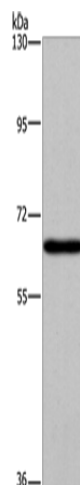
|                         |  |
|-------------------------|--|
| Product Type:           | Primary Antibodies   |
| Applications:           | IHC, WB  |
| Recommended Dilution:   | WB: 200-1000<br>WB positive control: HepG2 cells<br>IHC: 25-100<br>Positive control: Human brain<br>Predicted cell location: Cytoplasm   |
| Reactivity:             | Human, Mouse, Rat  |
| Host:                   | Rabbit   |
| Isotype:                | IgG  |
| Clonality:              | Polyclonal   |
| Immunogen:              | Synthetic peptide of human SLC6A1  |
| Formulation:            | pH7.4 PBS, 0.05% NaN <sub>3</sub> , 40% Glycerol   |
| Purification:           | Antigen affinity purification  |
| Conjugation:            | Unconjugated   |
| Storage:                | Store at -20°C as received.  |
| Stability:              | Stable for 12 months from date of receipt.   |
| Predicted Protein Size: | 67 kDa   |
| Gene Name:              | solute carrier family 6 member 1   |
| Database Link:          | <a href="#">NP_003033</a><br><a href="#">Entrez Gene 79212 Rat</a> <a href="#">Entrez Gene 232333 Mouse</a> <a href="#">Entrez Gene 6529 Human</a><br><a href="#">P30531</a>   |
| Background:             | The SLC6A1 gene encodes a gamma-aminobutyric acid (GABA) transporter, which removes GABA from the synaptic cleft. The cDNA contained an open reading frame encoding a hydrophobic protein of 599 amino acids with a calculated molecular weight of 67,022 daltons. Hydropathy analysis showed 12 potential transmembrane segments. The human protein is highly homologous to that from rat brain |
| Synonyms:               | GABATHG; GABATR; GAT1  |



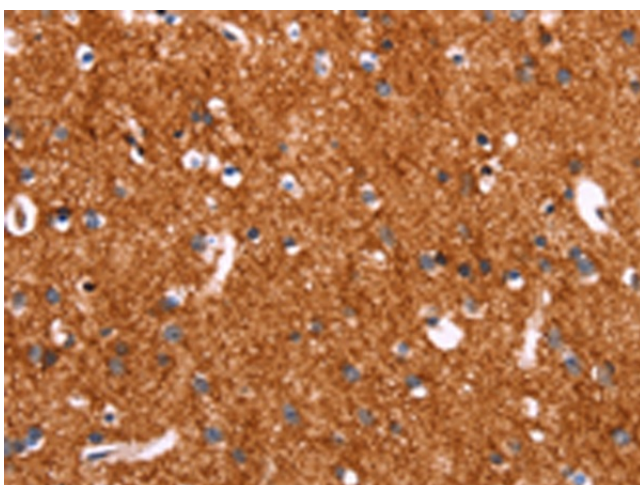
[View online »](#)

Protein Families: Druggable Genome, Transmembrane

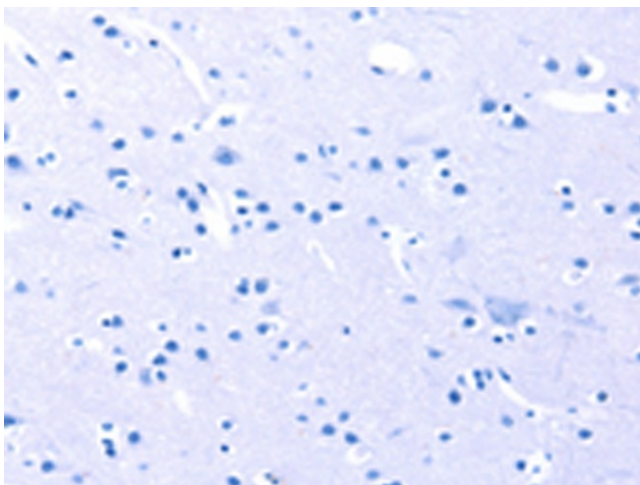
### Product images:



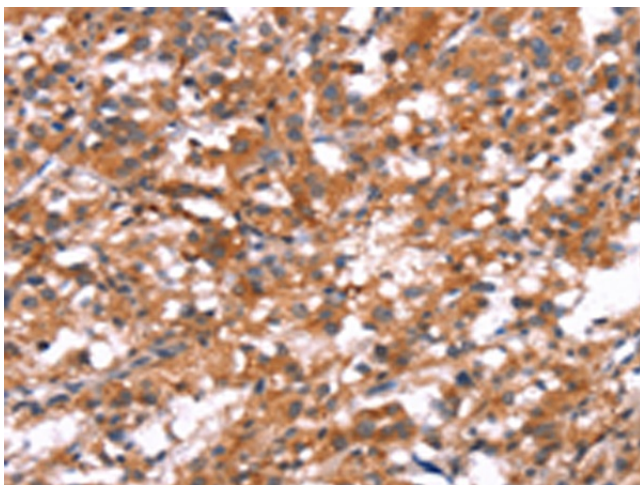
Gel: 6%SDS-PAGE  
Lysate: 40  $\mu$ g  
Lane: HepG2 cells  
Primary antibody: [TA351203] (SLC6A1 Antibody) at dilution 1/200  
Secondary antibody: Goat anti rabbit IgG at 1/8000 dilution  
Exposure time: 5 minutes



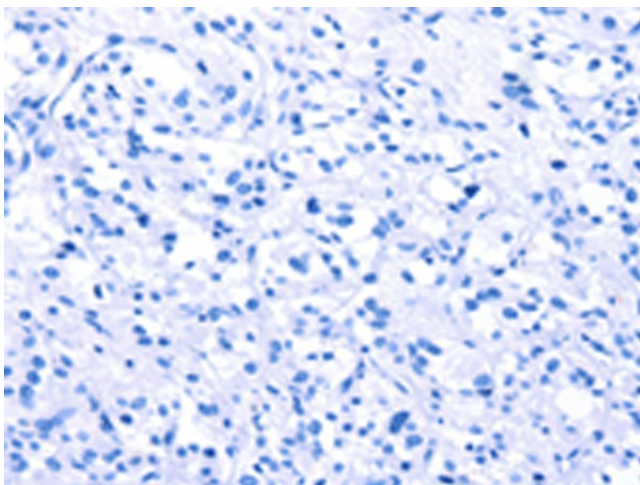
Immunohistochemistry of paraffin-embedded Human brain tissue using [TA351203] (SLC6A1 Antibody) at dilution 1/20 (Original magnification:  $\times$ 200)



Immunohistochemistry of paraffin-embedded Human brain tissue using [TA351203] (SLC6A1 Antibody) at dilution 1/20, treated with synthetic peptide. (Original magnification: ×200)



Immunohistochemistry of paraffin-embedded Human thyroid cancer tissue using [TA351203] (SLC6A1 Antibody) at dilution 1/20 (Original magnification: ×200)



Immunohistochemistry of paraffin-embedded Human thyroid cancer tissue using [TA351203] (SLC6A1 Antibody) at dilution 1/20, treated with synthetic peptide. (Original magnification: ×200)