

## Product datasheet for **TA351202S**

### FXR1 Rabbit Polyclonal Antibody

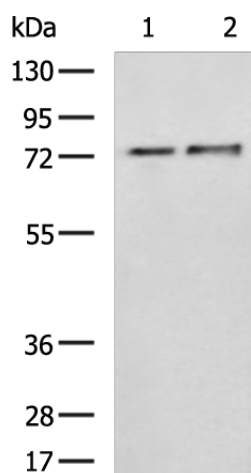
#### Product data:

Product Type:	Primary Antibodies
Applications:	IHC, WB
Recommended Dilution:	WB: 200-1000 WB positive control: A431 and U251 cell lysates IHC: 50-200 Positive control: Human liver cancer Predicted cell location: Cytoplasm
Reactivity:	Human, Mouse, Rat
Host:	Rabbit
Isotype:	IgG
Clonality:	Polyclonal
Immunogen:	Synthetic peptide of human FXR1
Formulation:	pH7.4 PBS, 0.05% NaN <sub>3</sub> , 40% Glycerol
Purification:	Antigen affinity purification
Conjugation:	Unconjugated
Storage:	Store at -20°C as received.
Stability:	Stable for 12 months from date of receipt.
Predicted Protein Size:	70 kDa
Gene Name:	FMR1 autosomal homolog 1
Database Link:	<a href="#">NP_005078</a> <a href="#">Entrez Gene 14359 MouseEntrez Gene 361927 RatEntrez Gene 8087 Human P51114</a>
Background:	The protein encoded by this gene is an RNA binding protein that interacts with the functionally-similar proteins FMR1 and FXR2. These proteins shuttle between the nucleus and cytoplasm and associate with polyribosomes, predominantly with the 60S ribosomal subunit. Three transcript variants encoding different isoforms have been found for this gene
Synonyms:	FXR1P
Protein Families:	Druggable Genome



[View online »](#)

## Product images:



Gel: 8%SDS-PAGE

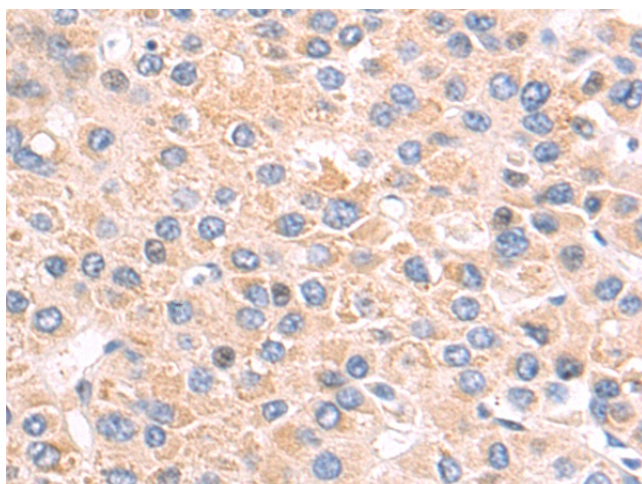
Lysate: 40  $\mu$ g

Lane 1-2: A431 and U251 cell lysates

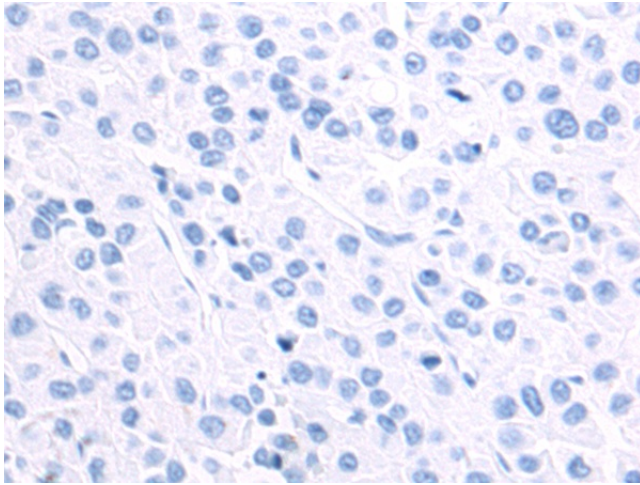
Primary antibody: [TA351202] (FXR1 Antibody) at dilution 1/200

Secondary antibody: Goat anti rabbit IgG at 1/5000 dilution

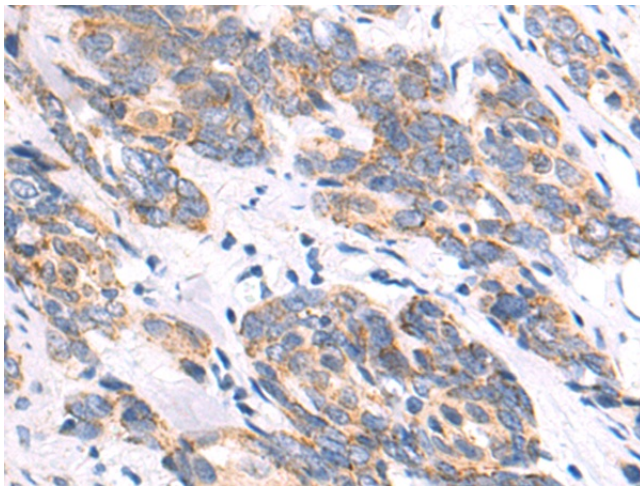
Exposure time: 3 minutes



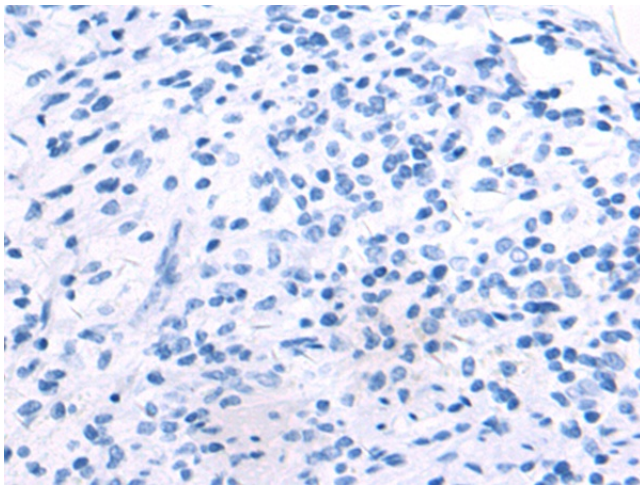
Immunohistochemistry of paraffin-embedded Human liver cancer tissue using [TA351202] (FXR1 Antibody) at dilution 1/50 (Original magnification:  $\times$ 200)



Immunohistochemistry of paraffin-embedded Human liver cancer tissue using [TA351202] (FXR1 Antibody) at dilution 1/50, treated with synthetic peptide. (Original magnification: ×200)



Immunohistochemistry of paraffin-embedded Human cervical cancer tissue using [TA351202] (FXR1 Antibody) at dilution 1/50 (Original magnification: ×200)



Immunohistochemistry of paraffin-embedded Human cervical cancer tissue using [TA351202] (FXR1 Antibody) at dilution 1/50, treated with synthetic peptide. (Original magnification: ×200)